

WEATHER

	Max.	Min.	Freez.
Wednesday, April 11	32	48	0.00
Thursday, April 12	31	45	0.00
Friday, April 13	28	47	0.00
Saturday, April 14	34	41	0.00
Sunday, April 15	30	62	0.00
Monday, April 16	45	67	0.00
Tuesday, April 17	35	60	0.00

ONE HUNDRED-THIRD YEAR—No. 44

16 Pages This Week

CHELSEA, MICHIGAN, THURSDAY, APRIL 19, 1973

15c per copy

SUBSCRIPTION: \$4.00 PER YEAR

The Chelsea Standard

QUOTE

"Every noble activity makes room for itself."
—Ralph Waldo Emerson.

School Board Reassigns All 4 Principals

In a move that sent shock waves through the administrations of Chelsea's schools, the Board of Education resolved, at the Monday night meeting, to reassign all Chelsea principals.

After a closed-door executive session which lasted until 12:20 a.m., the board reconvened the regular board meeting and dropped the unexpected motion on the table. It read: "That contracts be offered to all administrators for 1973-74 and that the board directs the superintendent to reassign the administrators as follows: Charles Lane to Beach Middle School, Alan Conklin to Chelsea High School, Sylvester Wojcik to North Elementary School and Robert Benedict to South Elementary School."

No reasons for the reassignments were offered at that time. The motion passed and the meeting was adjourned at 12:35 a.m.

Palmer Scholarship Fund Open to Public

When Chelsea lost Dr. A. A. Palmer in December 1971, it seemed to several of the well-known physician's colleagues that an era had come to an end.

He had been the archetypal family doctor who knew his patients as well as he knew his medicine. His admirers hated to see the model die.

"He did a great medical service," says Dr. William Hawks, "He continually updated his professional education and exemplified what one looks for in a family physician."

In remembrance of his virtues, a group of doctors in the community established a scholarship in his name soon after his death, and dedicated it to the practice of conscientious family medicine.

The \$500 stipend is to be offered to a Chelsea High School graduate who expresses a sincere interest in pursuing medicine as a career. An interest in family medicine is all the more desirable. Evidence of academic achievement and community involvement are also sought by the panel of doctors that interview candidates for the scholarship. Financial need is the final consideration.

The doctors, who have so far underwritten the scholarship from their own pockets, were unable to find a qualified candidate a year ago, but they report that four or five excellent candidates have applied so far this year. The deadline for applications, which are distributed through the high school counselors, is May 1.

The doctors are anxious to broaden the base of support for the Palmer Memorial Scholarship. They want to include non-physicians on the decision making panel in the future, and they hope to receive financial support from those in the community who fondly remember and respect the late doctor.

The doctors believe Dr. Palmer's former patients, who received so much at his hands, might be persuaded to contribute to his memory. Contributions may be directed to the Chelsea Community Hospital in care of the Palmer Memorial Scholarship Fund. Dr. Hawks or Paul Mann will also channel contributions into the fund. They request that checks be made out to the Palmer Memorial Fund.

Jaycee Easter Egg Hunt Set For Saturday

Easter eggs and Peter Cottontail will be the order of the hour, at 11 a.m., Saturday. That's when the children of Chelsea, who are in the second grade or younger, will swarm across Chelsea's football field in search of the 100 dozen eggs.

The Chelsea Jaycees sponsor this event yearly and always invite Peetr Rabbit. He will be arriving on the Chelsea fire truck as in years past. He will present prizes to kiddies who are lucky enough to discover the special eggs.

The Easter egg hunt will be organized in four groups so that pre-schoolers, kindergarten, first, and second graders will be competing with contemporaries. The community is invited.

Little League Director Sought for Summer

Chelsea Area Recreation Council is seeking a director to organize this summer's Little League program.

Adults interested in taking on this responsibility should contact Ken Larson at 475-2650.

Larson also would like to hear from adults interested in coaching Little League or T-ball teams.

Presenting Easter Cantata Tonight

The combined choir of St. Paul United Church of Christ, under the direction of Bruce Galbraith, are presenting the cantata "Jesus Christ, the Crucified" by D. Duane Blakely. A brass ensemble will accompany the choir.

This concert of holy music will be a part of the Maundy Thursday service on April 19, at 7:30 p.m., at St. Paul's. The public is invited to attend.



OFF AND RUNNING: Chelsea's track team has performed consistently so far and commands an even conference record after two conference dual meets. A non-conference opener gave them another win. The field events remain their forte while Coach Bert Kruse attempts to work the long distance runners into winning condition. Before the Novi meet Tuesday the team assembled in this order: from left, in front, John Beeman, Karl Gauss, Ishmael Picklesimer, Lee Ferguson, Jeff Marshall, Craig Coltre; second row, Terry Ellenwood, Rick Sweeney, Dan Heydlauff, Ken Buxton, Bill Tite, Don Pierson, Curt Winans, Jeff Van Riper; third row, Rex Miles, Steve Worden, Randy Young, Bill Rademacher, John Storey, Howard Salyer, Dennis Bauer, and Bill Bainton, coach; back row, Bert Kruse, track coach, Tim Lancaster, Bruce Guster, Mark Burnett, Dave Frame, Eric Prinzing, John Collins, Kevin Kelly and Dave Pletcher.

Police, Fire Dept. Assigned New Phone Numbers

Both the Police Department and the Fire Department have been assigned new telephone numbers. Both should be noted in case of emergency. The New Police Department number is 475-1555. The Fire Department may be reached at 475-1411.

Talent Sought For Summer Stage Show

"It's going to require a cast of thousands," said Miss DiAnn L'Roy with some exaggeration and lots of enthusiasm as she announced Chelsea Area Recreation Council's summer production of "Fiddler on the Roof."

The high school stage, which so recently had the look of London, will be transformed into a Russian peasant community by August 2, when the musical will open for a three-day run.

"You don't have to be a high school student, or even a former Chelsea High student to try out," she says. "This is a community project. We hope to have real mamas and papas trying out for the mother and father roles."

Try-outs will be held at the high school, May 21 and 22. Scripts and scores will be available from Miss L'Roy as of May 1.

In addition to actors, the production will require many hands to create costumes and sets. Props must be gathered from the community as well.

Miss L'Roy urges all ages from all parts of the community to consider trying out for this musical. It may well start a new tradition.

Track Team Runs Away With Novi

Chelsea trackmen left Novi in the dust, 71-52, Tuesday afternoon, to give the Bulldogs a one win, one loss conference record. Their over-all record now stands 2-1.

There were two double winners, Bruce Guster and Karl Gauss, among the Bulldogs pack. Karl took the honors in both the 100-yard and the 220-yard dashes, and ran with the winning 880 relay team. Bruce's 20'4" long jump took that event. He also contributed to the 880-yard relay team's victory and ran the 440 in the first-place time of :52.2.

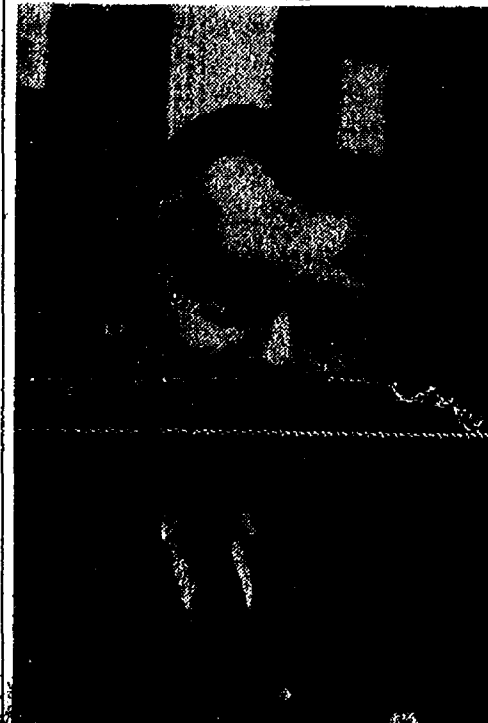
Both Ishmael Picklesimer, with a 43'7" mark in the shot put, and Tim Lancaster with 12'3" in the pole vault, took firsts. Tim was followed by Chelsea vaulters in second and third places. Don Pierson cleared 12 feet while John Collins passed over the nine foot height without touching.

Chelsea's 440 and 880 relay teams wrapped up their events. The shorter race was won in a time of :49.3. Ishmael Picklesimer, Howard Salyer, Curt Winans and Tim Lancaster amassed that time. The 880 was covered in 1:37.6 by Lee Ferguson, Howard Salyer, Karl Gauss and Bruce Guster.

Chelsea's mile relay team, with a time of 3:41.4, was second. Craig Coltre handled the 180 low hurdles in :22.3 while Curt Winans took third place in that event with :23.4.

Earning second-place honors for Chelsea were Ishmael Picklesimer in the 100-yard dash following Gauss; John Storey with a 11:34.8 time in the two-mile run; and Rick Sweeney whose 5'10" flight was recorded in the high jump event.

Steve Worden heaved the shot (Continued on page five)



RAY SPEAR

Year-Around School Plan Being Studied

For years taxpayers and school administrators alike have been considering ways to use their school facilities to greater advantage. One blatant waste period which often comes under fire is the summer months when the schools sit idle.

Ray Spear, superintendent of the Northville public schools will speak here in Chelsea, April 26, on one solution to that problem. His topic, "Year Around School," is an alternative that has been initiated in Northville.

Spear has been involved in the Northville school system since 1962 when he became an elementary principal there. Three years later he became assistant superintendent and in 1967 he was appointed superintendent.

Another dimension of his involvement in the schools of Northville comes through his two teen-age children.

Spear earned his undergraduate degree in education in New Hampshire at Plymouth State Teachers College in 1955. He took both his Master of Arts and his Education Science Degree at the University of Michigan.

The year-around school plan is not unique to Northville. It has been initiated, for example, in several California communities with success.

Spear will speak April 26, in the high school library at 7:30 p.m. The community is invited.

Softball Teams Entry Deadline Date Near

Ken Larson, athletic director for the Chelsea Area Recreation Council, is reminding softball fans that the registration deadline for both slow and fast pitch softball is Friday, April 27, only a week away. Larson suggests those interested in having a team in the league call him at 475-2650.

Before April 27, teams will be selected in the following manner: Teams that played in last year's league have first priority. New Chelsea teams are given the next consideration with new out-of-town teams being placed last.

After the deadline, April 27, teams will be entered into the league on a first come, first serve (Continued on page five)

Three School Board Posts To Be Filled

Any qualified voter in the Chelsea School District now has the opportunity to gain a seat on the Chelsea Board of Education. The chance lies in petitioning to become a candidate in the June 11 school board election.

Two full, four-year terms must be filled plus one one-year stint that remains of Mrs. Carolyn Smith's term. Mrs. Smith resigned from the board last fall after moving out of the school district.

Any resident of the school district who is 18 years of age, a U. S. citizen who has been a resident of the state at least six months and who has been a resident of the school district for at least 30 days is eligible to be a petitioner.

To become a nominee for the school board positions, the petitioner must acquire the signatures of at least 20 qualified school electors. (Continued on page eight)

Baseball Team Downs Tawas In Opener

Chelsea's varsity baseball season got off to a slow but successful start this week after several games were cancelled. Early April warm-up games with Stockbridge and Jackson Northwest were rained out. The April 10 duel with Dexter had to be rescheduled for April 25.

Thus, the home game, Saturday, with East Tawas was the first time Chelsea's nine got onto the field. They won, 6-4, on that beautiful day for a ball game. The baseball weather didn't last, however, and Tuesday's home game against Lincoln had to be rescheduled. The field was ruined by Monday's rain.

Also on Saturday evening, two native missionaries from Haiti will speak at North Sharon Bible church.

Special Easter Services Set at Area Churches

Holy Week Observances Start With Maundy Thursday Services

Churches in the Chelsea area began observing Holy Week, today, with Maundy Thursday services. Jubilant hosannas will be heard Sunday as the day of resurrection is celebrated at many sunrise services.

Holy Communion will be administered at 7:30 p.m. at St. Thomas Lutheran, First Congregational, O Savor Lutheran and St. Paul's United Church of Christ, Thursday evening, in remembrance of the Last Supper.

St. Paul's service will include a cantata entitled "Jesus Christ, the Crucified," by D. Duane Blakely, performed by the church's combined choirs under the direction of Bruce Galbraith. The service will follow a Passover supper sponsored by the Senior Youth Fellowship at 6:30.

St. Barnabas will also hold a Maundy Thursday service, at 7:30 p.m., with the Holy Eucharist and a vigil until 9:30. St. Mary Catholic church's Mass of the Lord's Supper will also begin at 7:30.

Holy Communion has been available to members of Zion Lutheran throughout the week through arrangements with the pastor.

First United Methodist church's Thursday evening service will begin a little earlier than most, at 7 p.m., while St. John's United Church of Christ at Rogers Corners starts a little later, at 8 p.m. North Lake United Methodist church will also congregate for a Maundy Thursday evening service, as will the residents at the Chelsea Methodist Home. The latter is a 2:30 p.m. gathering in the Home Chapel.

Good Friday will be observed by many of the community at the ecumenical service held at the Methodist church at 1:30 p.m. Both the Chelsea High School Choir and the Methodist Choirs will take part in providing the music for the event.

At 1 o'clock that afternoon, North Sharon Bible church will also have a service. Friday night, that congregation will join members of Immanuel Bible, Chelsea Baptist, and Iron Greek Bible churches in presenting "Greater Love Hath No Man," a cantata by John W. Peterson. It will be performed at Beach school by the combined choirs from the participating churches under the direction of Robert Schneider, Jr. Mrs. Marjorie Rowe will play the piano accompaniment while Mrs. Shirley Schneider, musical director of Immanuel Bible church, narrates. The program begins at 7:30 p.m.

Our Savior Lutheran church will hold a Good Friday service at 7:30 p.m. St. Mary's Solemn Liturgical Ceremonies will be conducted from 1:30 to 2:30, Friday afternoon.

While fewer services are planned for Saturday, the passion will be remembered with a showing of "King of Kings," at 7 p.m. at the high school. This film, shown through the co-operation of several congregations, is being sponsored by the Junior High UMYF.

Also on Saturday evening, two native missionaries from Haiti will speak at North Sharon Bible church.

at 7 p.m. The Rev. Cebien Alexis and the Rev. Rayond Mathier will sing in their native tongue and explain the work and needs of Christians in their primitive country.

This event, which will be attended by the director of Independent Gospel Missions, Dave Boyard, is an outgrowth of the missionary trip made to Haiti last Christmas by Mr. and Mrs. Everett Jennings of Grass Lake and Miss Jennell Caudill of Chelsea. The public is invited.

St. Mary's Vigil Mass of Easter begins at 8 p.m. Saturday.

Sunrise worship services will begin at 6 a.m. at North Lake. A similar service, at 6:30, at Our Savior Lutheran will be followed by an Easter breakfast scheduled for 7:15. After 8:30 Easter services at the Medical Center, a Holy Communion service will be at the church at 10:30.

Immanuel Bible's sunrise service will take place at 7 a.m. and will be conducted with special music, by the young adult class. An Easter breakfast, prepared by the men of the church, will follow.

St. John's United Church of Christ's early service will be at 9 a.m. From 9:30 to 10:30 an Easter breakfast will be held followed by the Easter Celebration with Holy Communion at 10:30.

Easter will be observed at the Chelsea Methodist Home with the regular 8:45 service and an Easter Story at 2:30 that afternoon. The Easter service with Holy Eucharist will be held at St. Barnabas at the usual time. North Sharon Bible church will also hold its Easter morning service at the regular time. St. Mary's masses will be, as always, at 8, 10 and 12.

St. Thomas will have a 6:30 sunrise service followed by a breakfast at 8 a.m. Holy Communion will be at the 10 a.m. worship service. Zion Lutheran's sunrise service is also at 6:30 with a breakfast following. The Festival worship service with Holy Communion will be at 10:15.

Similarly, St. Paul's will offer a 6:30 sunrise service sponsored by the Senior Youth Fellowship, who will also sponsor the breakfast at 7:30. Communion will be at the 10:30 service.

The First Methodist church's sunrise service will be at 7:30. The congregation may breakfast together after the service, or before attending the 10 a.m. Easter worship.

The First Congregational church will have a 7 a.m. early service followed by an 8 a.m. breakfast. Their Easter worship service will be at 10 a.m.

The Assembly of God will be visited at both the 11 a.m. and the 7 p.m. Easter services by Jimmy Barnard, veteran missionary from Liberia who is now on his way to direct church activities in Brussels.

The Church of Christ on Old US-12 will celebrate Easter at the regular service with a guest evangelist, Ira Rice from San Francisco, Calif. He is director of the World's Evangelist School there.



BULLDOG VARSITY BASEBALL began slowly this soggy season with several of the early spring warm-ups rained out. Play finally got underway last week-end when the Bulldogs defeated East Tawas at Chelsea High's field. They are shown here, just before bowing to Lincoln, 12-2, in Tuesday's game, from left, in the front row: John Tandy, Steve Schanz, Kevin Webb, Jeff

Sprague, John Houle and Ron Clark; in the second row: Coach Carl Genske, Dave Tucker, Perry Johnson, Howard Haselschwardt, Doug Reed, Dave Laubon, and Coach Mike Vaughan; in the back row, Glenn Alter, Mike Nadeau, Don Houle, John Mann, Craig Alter, and Jeff Daniels.



BUNNY BRIGADE: In a perfect example of teacher-parent co-operation, room mothers of kindergarten students decided to lend a hand in preparing the classroom Easter celebration. The result was 230 bunnies to delight the children at the class party today. Some of the hard-working bunny-makers are shown here, in the front, from left to right,

Mrs. Ronald Satterthwaite, Mrs. Willis Westphal, Mrs. Gerald Kraus, Mrs. Ronald Lorenzen, and Mary Lou Stoddard; back row, Mrs. Floyd Grau, Mrs. Charles Bulson and Mrs. Arnold Deaenhofer. Not present for the photo were Mrs. Tim Schulze and Mrs. Gary Wilber. The handywork was accomplished with 12,600 cotton balls and milk cartons.

Uncle Lew from Lima Says:

DEAR MISTER EDITOR: I got to thinking recent about a feller I knowed a long time back that allus put a dollar and a dime in the collection plate at church. He said the dime was fer the Lord and the dollar was to pay the dime's way. Mister Editor, I'm thinking he was right about the transportation cost then, and they been gitting higher ever since.

You could make a good case fer what the feller said by looking at the mail. The postage rates is gitting higher and higher and the mail slower and slower. I saw this piece in the papers the other day where this feller said a letter sent first class may cost 20 cent in 10 year, and I was of a mind that by that time it will be cheaper and quicker to visit. But we still git more service fer our postage money than we do fer anything else the Government has a hand in.

Actual, the Postal Service is working fewer people longer, but the volume of mail keeps growing faster than they can gear up to handle it. What I'm talking about is the holes in the pipeline that supposed to pump all our public money, and a heap of our private money, from one place to another. Government services allus reminds me of the story of the hunter and his dog. As a reward fer faithful service, the feller would give the dog a piece of his own tail. He kept doing this till final the dog eat hisself up. And ever time the dog took a bite he would lick his chops fer more.

The fellers was talking about the leaks in the pipe from the giver to the gitter during the ses-

sion at the country store Saturday night. It was general agreed that the tail has been wagging the dog fer a long time in this Government service business and paying migh dear fer the privilege. Clem Webster said he heard a feller say the United States was now in the Jackass Age, and the taxpayer is the head jackass of all.

Ed Doolittle said it's a sight in this world how much the taxpayers will suffer fer all the free services they enjoy. And Republican Ed went on to allow he was glad to see the Nixon Administration working to cut down on some of them 1,654 ways to git free Government money he saw listed in a book called "Catalog of Federal Domestic Assistance." But Ed said we can't expect much improvement when we got a congress that keep feeding the spending fire. Ed had saw where House members has voted themselves 38 free trips home ever two-year instead of 26, and they has raised their stationery allowance from \$3,500 to \$4,250 a year. If they don't spend that much, they can draw what's left in cash.

Spending is a mighty contagious disease, Mister Editor, and it's as hard to git our tax money through that leaky pipe to Washington and back as it is to git that dime to the Lord.

Yours truly,
Uncle Lew.

Methodists Plan Euriskon Meeting Series

A new evangelistic program called Euriskon will be presented soon at the United Methodist church. "Christ-centered and reality-oriented," Euriskon combines traditional evangelism with the dynamics of modern group communication.

Euriskon, which gets its name from a Greek term meaning "discovery," is intended to appeal to all ages. Created by Barry L. Johnson, a young United Methodist minister from Illinois, the program is only three years old, but has caught on so rapidly in both United Methodist and other congregations that the Rev. Johnson has found it necessary to train other directors. The Rev. Robert Brubaker of Adrian will direct the Chelsea program. Jim Lorenz is chairman of the planning committee.

The experience includes five successive evenings dealing with the following themes: trust, adaptability, self-responsibility, interdependence, and the centrality of Christ. Each session is divided into two 45-minute phases.

Phase I centers on proclamation and celebration through preaching and singing. A break for light refreshments is followed by phase II which consists of written, mental, and physical exercises corresponding to the particular theme of the evening. An open discussion closes each Euriskon meeting. Participants should dress informally.

By stressing the individual's commitment to Christ as it is revealed in interpersonal relationships, Euriskon attempts to promote reconciliation between man and himself, man and his brother, and man and his God.

No "old-time" pressure tactics will be used, and everyone is welcome to attend freely, whether they be members of a church or not.

Dates for Euriskon are April 29 through May 3. The program will begin each evening at 7:30.

Telephone Your Club News To 475-1371.

Howell Livestock Auction

Meson: 677-8941
The Wise Owl Says Ship to Howell
Phone 546-2470. Bim Franklin

Market Report for April 16

CATTLE
Good to Choice Steers, \$45 to \$46.50
Good Choice Heifers, \$43 to \$44.50
Good Holstein Steers, \$40 to \$43
Ut-Std., \$35 and down.

COWS
Heifer Cows, \$38 to \$40
Ute-Commensal, \$36 to \$38
Canner-Cutter, \$31 to \$34
Fat Beef Cows, \$32 to \$35

BULLS
Heavy Holstein, \$40 to \$44.50
Light & Common, \$38 and down.

CALVES
Fatties, \$50 to \$70
Good-Choice, \$50 to \$60
Heavy Deacons, \$50 to \$100
Cull & Med., \$70 to \$90

FEEDERS
300-500 lb., Good to Choice Heifers, \$43 to \$50
400-700 lb. Good to Choice Steers, \$48 to \$50
800-1000 lb. Holstein Steers, \$48 to \$55
500-800 lb. Holstein Steers, \$42 to \$48
Common-Med., \$40 and down.

SHEEP
Woolled Slaughter Lambs:
Choice-Prime, \$35 to \$38
Good-Utility, \$33 to \$35
Slaughter Ewes, \$6 to \$16
Foster Lambs, all weights, \$33 to \$36

HOGS
200-250 lb. No. 1, \$36.50 to \$37.20
200-250 lb. No. 2, \$35 to \$36.50
250 lb. and up, \$34 to \$36
Light Hogs, \$34 and down.

Sows
Fancy Light, \$31 to \$32
800-1000 lb., \$31 to \$32
300 lb. and up, \$29 to \$31

Boars and Stags
All Weights, \$29.50 to \$33.50

Feeder Pigs
Per Head, \$24 to \$34

HAY
1st Cutting, 40c to 65c
2nd Cutting, 65c to \$1.10

STRAW
Per Bale, 40c to 60c

COWS
Tested Dairy Cows, \$350 to \$550
Tested Beef Type Cows, \$300 to \$400

'Come and see our Expansion Program underway'

INVERNESS INN

Your Innkeepers: Matt and Marge
13996 North Territorial Rd. - North Lake

YOUR FAVORITE MEALS
SHRIMP, CHICKEN & FISH DINNERS

BEER - WINE - LIQUOR - PIZZAS
LUNCHEON SPECIALS

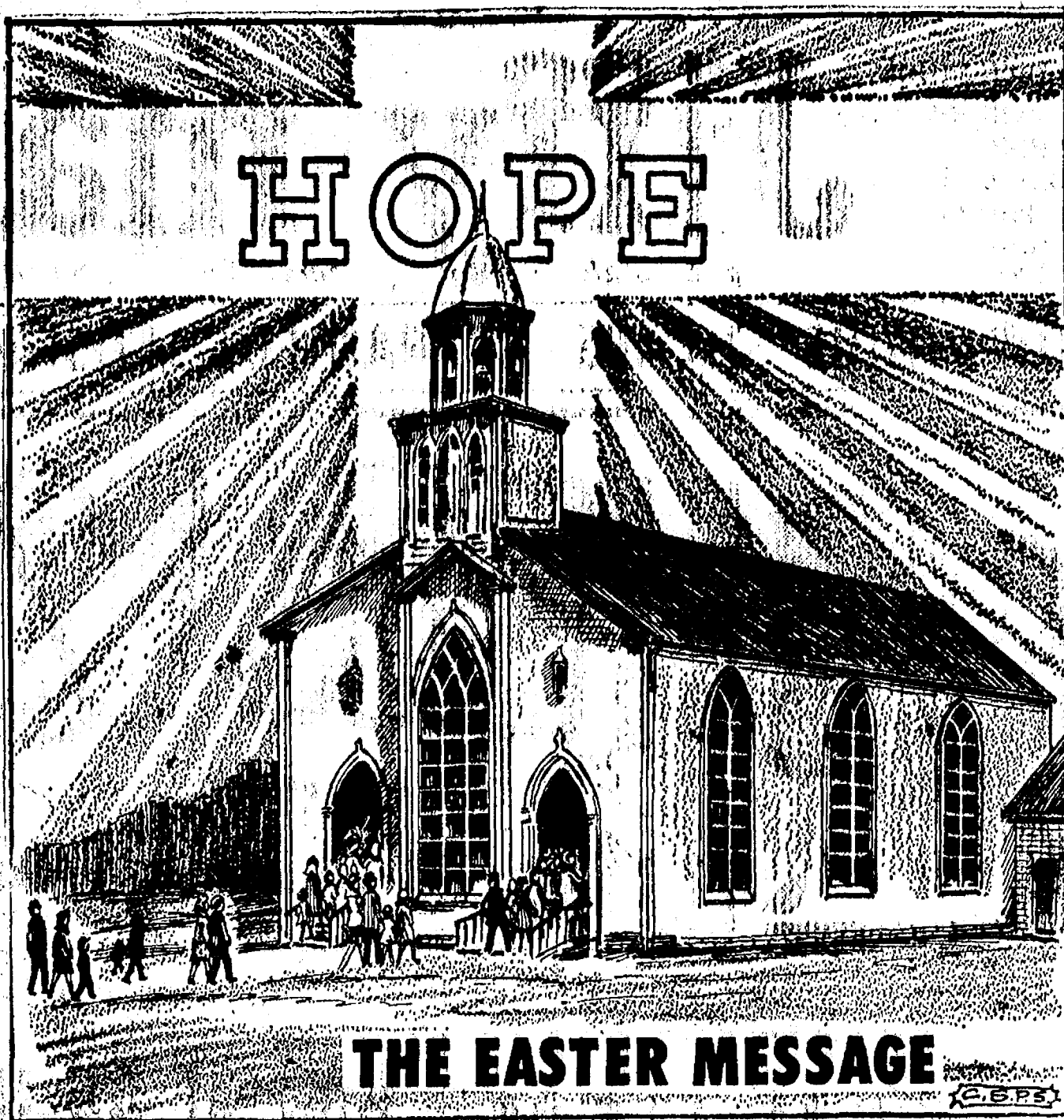
TOM CROCKER AND HIS SING-ALONG
SATURDAY EVENING

Established 1871 The Chelsea Standard Telephone 475-1371
Excellence Award By Michigan Press Association
1951-1952-1960-1964-1965-1968
Walter P. Leonard, Editor and Publisher

Published every Thursday morning at 800 North Main Street, Chelsea, Mich. 48116, and second class postage paid at Chelsea, Mich., under the Act of March 3, 1879.

Subscription Rates (Payable in Advance)
In Michigan: One Year \$4.00 Six Months \$2.25 Single Copies \$.15
Outside Michigan: One Year \$6.00 Six Months \$3.50 Single Copies \$.20
Service men or women, anywhere, 1 year \$4.00

MEMBER NATIONAL NEWSPAPER Association - Founded 1898
National Advertising Representative: MICHIGAN NEWSPAPERS, INC. 287 Michigan Ave. East Lansing, Mich. 48823



THE EASTER MESSAGE

MICHIGAN MIRROR

By Elmer E. White, Secretary, Michigan Press Association

If a request doesn't work, perhaps financial pressure will.

In its last session the state legislature asked medical schools to produce more family doctors. By 1975, if progress in this direction is not apparent, lawmakers may stop asking and start telling. They can do this most dramatically by earmarking funds in the annual hefty appropriations for medical education.

The basic issue is the establishment of departments of family medicine at state supported schools. A joint legislative resolution was passed last year which urged that this be done to help solve the problem of Michigan residents who can't find a family doctor. Nothing much happened.

Now State Senator Alvin DeGrow, who sponsored the earlier resolution, is the author of another. Already adopted by the Senate and under consideration in the House, it would create a committee to study the problems of education and the general practice of medicine in Michigan. Its final recommendations would be due Dec. 31, 1974, and could result in legislation ordering the schools to establish departments of family medicine and to add general practitioners to their faculties.

Many places like the Senator's home town of Pigeon, population: 1,191, suffer from a shortage of family physicians. So do larger communities, the inner city and even suburbs. The Michigan State Medical Society is concerned about the distribution of physicians and is co-operating with the Michigan Academy of Family Physicians in its efforts to encourage action in the medical schools.

Both professional groups are co-operating in school based programs to place medical students in "preceptorships" (a fancy term for on-the-job training) with family physicians. Family Practice Clubs at medical schools meet in the evening and bring students together with family doctors. These

sessions are very popular with students, but the extracurricular and off campus experience doesn't seem to compensate for classroom nudging toward specialization which most students get from the teaching staffs.

Medical schools are moving, but at different paces, and not as fast as is needed. Among suggestions for improvement is that at least one physician in private practice be included on medical school selection committees. MSU's Osteopathic college last year established a department of family medicine with Dr. Robert C. Ward, who came from private practice, as its head. The MSU Human Medicine College, under urging from Dean Andrew D. Hunt, Jr., is trying to expose more students to family practice by setting up plans for residencies in Family Practice.

Wayne University's medical school is making efforts for primary health care aimed at medical service to the community in clinics rather than family practice, but this is mostly theory rather than practice. It is moving in the family practice area slowly, if at all.

Because medical specialists are needed and University of Michigan has a world-wide reputation in this

field, it is hard for the staff there to turn its attention to family practice, even though that's where the action obviously is. U-M medical staff has organized a program in conjunction with the other two medical schools where graduating students will be trained in family practice, but it remains to be seen how much enthusiasm the U-M staff will maintain.

Medical school staffs are composed in large part by people who prefer to dedicate their lives to science and research rather than practice. It is not unnatural that their interests in specialization should be adopted or even sold to students as aspirations for their own careers. Staff members have a great deal to say about how the medical school will function, who the other teachers will be, and where emphasis for graduates shall be made.

When students are surrounded with encouragement to specialize, some effort must come from elsewhere to speak for Michigan families who need the services of family physicians. It is the family's tax dollars which pay for the medical education and legislators are their representatives and a proper point for them to turn for help.

Unless medical educators wake up and show more signs of meeting the public's needs, they can expect to see some strings tied to appropriation bills which fund the schools. This is a blunt way to make them more responsive to needs of the people who pay their salaries.

Such restrictions are abhorrent to all educators who feel they should be left free to function as they choose once they are selected for their staff positions. The need for such restrictions is lamentable. Medical educators—administrators and faculties—could well turn their attention to this problem now, rather than waiting for a legislative order. Then the people of Michigan might not have to wait so long for more family doctors.

REAL ESTATE ONE

CALL US FIRST... BECAUSE WE ARE

We have a variety of properties available. One of them could be just right for you.

73-0401 We have a charming three bedroom brick and wood house on 17 acres of rolling land. There are trees and even a fish pond in the front yard. A beautiful setting on a country road lends privacy and pleasant tranquility. A house that anyone would enjoy owning. \$69,000. Evenings call Ed Coy at 426-8235 or Don Slazinski at 971-6022.

73-0659 Or we have this one that anyone would be proud to own. It is a distinctive three-bedroom brick ranch with beautiful natural wood cathedral ceilings and a massive stone fireplace. Air conditioned for summer comfort. Set on a large lot. There are many quality features in this outstanding home. \$54,900. Evenings call Bob Parker at (517) 764-2015 or Bob Myrnel at 663-0122.

72-2342 Have you ever thought about owning a country store? We have one in Jackson County. There is a two bedroom apartment, grocery store with beer and wine take-out license, and three gas pumps set on approximately one acre of land. It's a real going business. \$64,500. Evenings call Bob Parker at (517) 764-2015 or Gary Lillie at 760-1034.

73-0435 If you're interested in building a home in the country we have two excellent parcels in the Chelsea School District. We have 10.03 acres with a pond site and an adjoining 5.8 acres. This is a lovely country setting. Priced to sell at \$11,000 and \$9,000 respectively. Evenings call Ed Coy at 426-8235 or Don Slazinski at 971-6022.

WHY LIST WITH REAL ESTATE ONE?

1. WE FIND BUYERS—over 5,000 homes sold each year. (A city the size of Traverse City, Monroe, or Ypsilanti.)
2. BEST PRICE—COMPUTERIZED APPRAISAL TECHNIQUES help get top price.
3. OUT OF STATE BUYERS — We maintain a separate, salaried department which specializes in contacting transferees and large and small corporations.
4. WE TAKE TRADES—over \$3,000,000 worth of property sold last year because of our Trade In Program.
5. WE HAVE 23 LOCAL OFFICES AND 13 OUT-STATE OFFICES TO SERVE YOU.
6. CLOSING EXPERTS—We maintain the most modern computerized closing department staffed by professionals.
7. BEST TRAINED—Our Sales Associates spent over 50,000 hours in technical instruction last year alone.
8. FULLY STAFFED — We have 350 full time professional sales associates.
9. WE SHOW HOMES — over 1200 prospective buyers are shown homes by REO Associates each week.
10. OUR EXCLUSIVE PHOTOGUIDE has a distribution of over 50,000 a year to prospective buyers, corporations, motels and retail stores.
11. WE ADVERTISE MORE THAN ANY OTHER COMPANY — over six full pages of newspaper advertising alone each week, plus radio and television.

Real Estate One.

WEED REALTY, INC. ASSOCIATES

ANN ARBOR
1300 S. MAIN
761-8313

CHELSEA
1196 M-52

475-8693

MEMBER MULTIPLE LISTING SERVICE

JUST REMINISCING

Items Taken from the Files of The Chelsea Standard

4 Years Ago...

Thursday, April 17, 1969—

Chelsea High school senior Karen Sue Leach has been selected to receive one of three \$500 March of Dimes scholarships given to seniors in Washtenaw county who plan to enroll in medical professions studies. Karen, daughter of Mr. and Mrs. Melvin Leach, 40 Cavanaugh Lake Rd., will enroll in the school of Social Work at Eastern Michigan University this fall. In addition to a B-plus average, she maintains a busy schedule of membership in the National Honor Society, Student Council, and All-Star Band. She is a majorette, a baker at Farmer Grant's, and was Homecoming Queen.

The Athlete Scholar Award was presented to Chelsea High school senior, Mike Schnadt, at the Monday night athletic banquet sponsored by the Kiwanis Club. Schnadt who has lettered in football, track and basketball, and has maintained better than a B average for seven semesters, received a trophy and a large athletic scholar trophy was given to the high school.

A \$379,664 village budget featuring the same tax rate as in 1968 was approved at Tuesday night's Village Council meeting. The budget, drawn up largely by the 1968 council members in conjunction with the village personnel, provides for a total tax rate of 6.30 mills.

Officers and a Board of Directors were elected at the Chelsea Community Fair Board annual meeting, April 10. Herman Koehn, elected president last year, will finish his two-year term in office while Allen Broesamle is vice-president, and Everett Van Riper will again act as fair co-ordinator. John Wellnitz was named as new treasurer and Ed Keizer will be secretary.

14 Years Ago...

Thursday, April 16, 1955—

Chelsea's new campus-style high school will be dedicated at special ceremonies, Sunday, in the gymnasium beginning at 3 p.m. The dedication address will be by Gordon Riethmiller, a Chelsea High school graduate and now president of Olivet College.

Clayton Parr, Manchester township supervisor the past 8 1/2 years, has been elected chairman of the Washtenaw County Board of Supervisors for the coming year. Parr defeated incumbent William E. Schell of Salem township. E. A. Wolter of Scio township was unanimously elected vice-chairman.

"Brothers of the Brush" around town are all comparing the length of the beards they are growing in preparation for Chelsea's 125th

anniversary celebration. Carl Mayer, Chelsea's postmaster, found it helpful to use a magnifying glass as he checked early this week on his "brush brother," M. W. McClure, manager of the Chelsea branch office of Michigan Consolidated Gas Co. to see if the beard was starting.

Chelsea's Bulldog baseball team playing with seven sophomores in the line-up, and after dropping their first three ball games as a result of one bad inning in each game, turned back the defending Huron League champions, the Flat Rock Rams, in a very tight 2-1 ball game played at Flat Rock last Tuesday.

Mr. and Mrs. Calvin Clark entertained at a family gathering at their home, Sunday, it being the first time in seven years that the entire family had been together at the same time. Present were Mrs. Clark's brother and his wife, Mr. and Mrs. Clifford Riethmiller, who recently returned from four years in Norway, a sister and her family, Mr. and Mrs. Sam Hartley from Kentucky, Mr. and Mrs. Kenneth Riethmiller and family and Mr. and Mrs. N. J. Riethmiller from Grass Lake.

24 Years Ago...

Thursday, April 21, 1949—

Donna Lou Kalmbach is to be valedictorian of the class of 1949 at Chelsea High school, and Mary K. Palmer will be salutatorian.

The Student Council, the faculty, and the administration of the Chelsea Agricultural school are becoming increasingly worried over the crowded condition of the playground. Since the building of the home economics wing, space has been at a premium; since recent enrollment in all grades has grown so rapidly, the overcrowding has reached dangerous proportions, particularly at noon, school officials say. Even if the noon use of

the playground could be restricted to only the four bus-loads of rural children, the overcrowding would still be serious.

Members of the Chelsea Fire Department have plans to honor their former chief, Howard Brooks, who announced his retirement to members of the department on March 29.

A board of special assessors to levy assessments on sidewalk and curbing projects in the village was appointed at the Village Council meeting Monday evening. Claude Spiegelberg is chairman of the board. Joseph C. Dreyer and Harry Prudden are the other members.

34 Years Ago...

Thursday, April 20, 1939—

Fred Seitz of Lima reports that on March 31, one of his brood sows gave birth to 13 pigs, all of which died within a couple of days. Not being satisfied with such poor results, the same sow gave birth to 10 pigs on April 14, and so far they are all living. According to Seitz, this unusual occurrence has been reported before from other parts of the country, but such cases have never before been reported in this community.

A kite flying contest for Cub Scouts and their dads, sponsored by the American Legion, was held last Saturday, April 15, on the practice field of the University of Michigan, with 27 Cubs and their dads participating. Chelsea boys participating were Paul Schaible, Robert Daniels, Jack Chriswell, Douglas Vogel, Ray Knickerbocker, and Clare Knickerbocker.

At the regular meeting of the village council held Monday evening, president Roy Harris made the following appointments: President pro-tem, J. E. Weber; finance committee, Wilbur Hinderer, Ernest Adam and A. E. Winans; street committee, J. E. Weber, David Beach and Waldo Kusterer; home economics wing, space has been at a premium; since recent enrollment in all grades has grown so rapidly, the overcrowding has reached dangerous proportions, particularly at noon, school officials say. Even if the noon use of

Radio-teletypewriter operator.

As a radio-teletypewriter operator in today's Army you'll pick up many valuable skills. Radio transmission, typing, cryptography, and communications maintenance and operation.

And you'll be paid while you learn. Starting at \$307.20 a month.

FOR IMMEDIATE INFORMATION CALL:
PHONE 665-3731 or 665-3732
ADDRESS: 212 S. Fourth Ave.
Ann Arbor, Mich. 48108

Easter Flowers

CHELSEA KIWANIS CLUB FLOWER SALE

All profits go for community service projects.



FRIDAY and SATURDAY APRIL 20 and APRIL 21

Friday, 8 a.m. to Noon, 3 p.m. to 9 p.m. - Saturday, 8 a.m. to 6 p.m.

- at -

Heydlauff's Store, 113 N. Main St.

'Remember Her With Flowers'



Full Line Supermarket
BEER - WINE - LIQUOR
LOTTERY TICKETS
MARATHON GAS PUMPS
2-CYCO GAS PUMPS
AUTHORIZED
FOOD STAMP STORE

Jiffy market

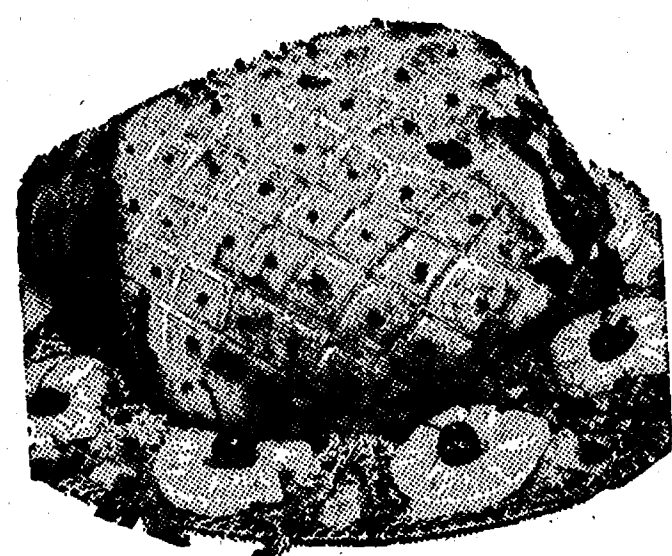
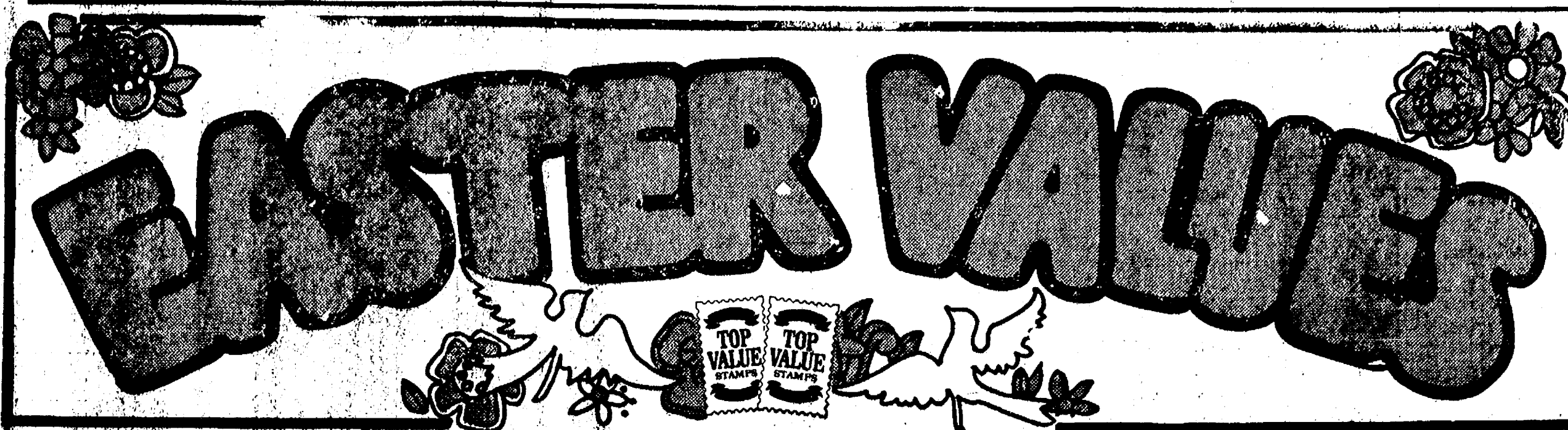
Big Enough To

Serve You . . . Small Enough To Know You!

Open 7 Days A Week
7 a.m. to 10 p.m.
Corner Sibley & Werkner Rds.
PHONE 475-1701

Sale Prices Effective
Thurs., April 19 thru Sun., April 22

TOP VALUE STAMPS - GUARANTEED SATISFACTION - COURTEOUS SERVICE



HYGRADE'S
WEST VIRGINIA

HAMS

FULLY COOKED
SEMI-BONELESS
DEFATTED
SMOKED

11 to 13 lbs.
WHOLE
HAM

1/2 HAM

\$1⁰⁹

\$1¹⁹

AGAR

CAN HAM

8 lbs. \$8⁴⁹

A beautiful ham for a small family
at a bargain price for ham.

FARMER PEET'S

King of All Hams

BONANZA

WHOLE HALF

Boneless
Fully Cooked
Smoked

\$1²⁹ \$1³⁹
lb. lb.



HOME-MADE
PORK SAUSAGE
89¢ lb.

CHECKERBOARD
U.S.D.A. GRADE A
CORNISH HENS
1 1/2 Lbs.
Each 89¢

MEADOWDALE
SLICED BACON
1-Lb.
Pkg. 99¢ lb.

CHUNK BOLOGNA
69¢ lb.

ECKRICH OLD FASHION
ROPE SAUSAGE
\$1.19 lb.

YOUNG - LEAN - TENDER
WHOLE
PORK LOINS
Cut and
Wrapped
Free 85¢ lb.

U.S.D.A. CHOICE
STANDING
1, 2, 3, 4 Ribs \$1⁵⁹
5, 6, 7 Ribs \$1²⁹

LONGHORN - COLBY
CHEESE
Bulk 88¢ lb.

This Is STORE X - Special Easter Value Prices Plus FREE Top Value Stamps



BIRDSEYE
COOL WHIP

9-Oz. Plastic
Container 39¢

MEADOWDALE
PEAS OR CORN

1 1/2-Lb.
Bag 39¢

CAMELOT SLICED
STRAWBERRIES

10-Oz.
Pkg. 29¢

STORE X EASTER HOT PRICE
OLD FASHION

MOUNTAIN TOP PIES

Peach Apple Large
Cherry 2-Lb., 5-Oz. 89¢



**GARDEN
FRESH
VEGETABLES**

U. S. NO. 1 IDAHO BAKING RUSSETT
Potatoes ... 8-lb. bag 98¢

YELLOW - RIPE
Bananas 2 lbs. 29¢

LARGE HEAD CALIFORNIA
LETTUCE 35¢

CALIFORNIA RED RIPE
Fresh Tomatoes . lb. 39¢

LADY BORDEN

**ICE
CREAM**



Quart

53¢

Large Assortment
of Flavors

Chocolate Butter Pecan
Cherry Almond Pistachio Nut
French Vanilla Coffee
Tin Roof Swirl Double Strawberry Swirl



**LIQUORS
WINES
BEERS**

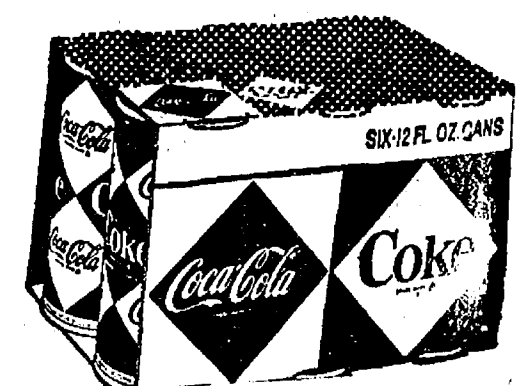
YOUR JIFFY MARKET

Has the largest selection in this part
of the state at the lowest possible
price.

**VERNOR'S
GINGER ALE SPECIAL**

6 PACK 29¢ 1 Pt. 12-Oz. Bottle \$1⁶⁹

1 Pt. 12-Oz. Bottle
Bottle
VERNORS STORE X HOT PRICE



Coca-Cola STORE X HOT PRICE

8 1 Pint bottles 98¢

SWEET CREAM
MICHIGAN BUTTER lb. 68¢

CROWN SWEET PICKLES qt. 49¢

9-OZ. KRAFT
MARSHMALLOW TOPPING . . . 29¢

ASSORTED FLAVORS
JELL-O, 8-oz. pkg. 9¢

12-CT. PKG. HOLSUM
Brown & Serve Dinner Rolls . . . 29¢

1-LB., 7-OZ. CAN MEADOWDALE
SWEET POTATOES (Yams), lb. . . . 29¢

14 1/2-OZ. BOX DUNCAN HINES
ANGEL FOOD DELUXE CAKE MIX . 49¢

7-OZ. JAR IMPORTED
SPANISH OLIVES 49¢

1-LB., 1-OZ. JAR COMSTOCK
MIXED BEAN SALAD 37¢

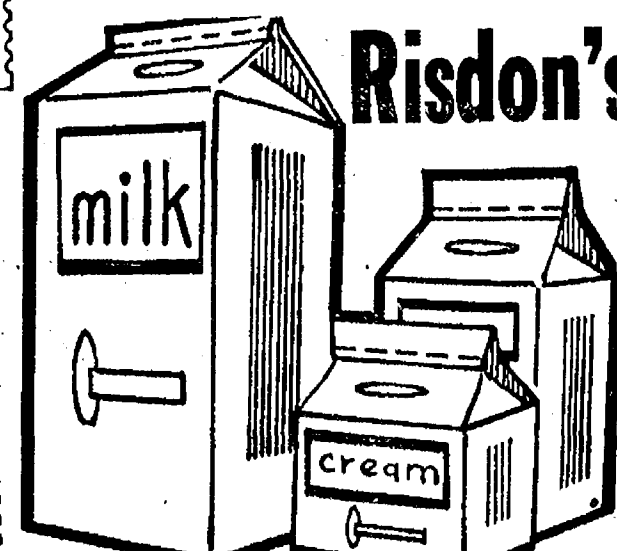
50-CT. KLEENEX
DINNER NAPKINS 28¢



GOLD MEDAL

FLOUR

5 Lb. Bag 55¢



Risdon's

Homogenized Milk
1 Gal. - 88¢

HALF & HALF
1 Quart - 39¢

COTTAGE CHEESE
15-Oz. Grtn. 39¢

MICHIGAN
SOUR CREAM

1 Pt. - 39¢

PIONEER OR BIG CHIEF



SUGAR

5-Lb. Bag

59¢

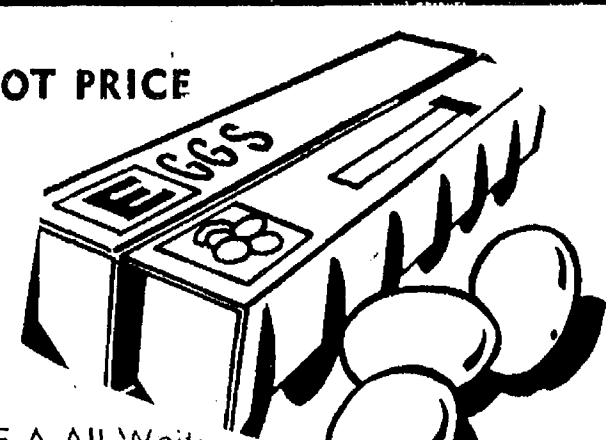


**MIRACLE
WHIP**

1-Quart Jar

48¢

STORE X
DAIRY HOT PRICE



U.S. GRADE A All White

EGGS

Medium
Size
Dozen

49¢

Thank
You



We appreciate your business!

JIFFY MARKET MARATHON GAS PUMPS
TOP VALUE GAS PLUS FREE TOP VALUE STAMPS

REGULAR
GAS 37.9 gal.

Includes All Taxes

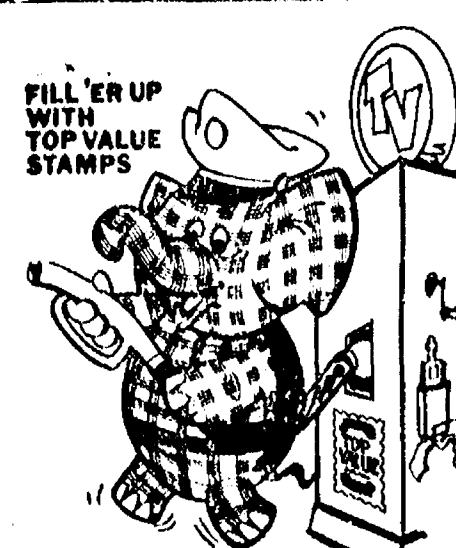
PREMIUM
GAS 39.9 gal.

Includes All Taxes

Gas Pump Special!!
PACKAGE of
CIGARETTES

YOUR
CHOICE 35¢

Includes
All Taxes



STORE X - Your Stamp Store FREE Gift To You

VALID HERE

200 FREE Top Value Stamps

Bring This Coupon to This Stamp Store.

STORE X - YOUR JIFFY MARKET

GOOD ONLY APRIL 19 THRU 22, 1973.

Ads
Taken
Till 1 p.m.
Tuesday

USE ACTION-PACKED WANT ADS

Just
Phone
475-1371

WANT ADS

The Chelsea Standard

WANT AD RATES

PAID IN ADVANCE—All regular advertisements, 75 cents for 25 words or less, each insertion. Count each figure as a word. For more than 25 words add 3 cents per word for each insertion. "Blind" ads or box number ads, 35c extra per insertion. CHARGE RATES—Same as cash in advance, with 35 cents bookkeeping charge if not paid before 1 p.m. Tuesday preceding publication. Pay in advance, send cash or stamps and save 25 cents. DISPLAY WANT ADS—Rate, \$1.40 per column inch, single column width only. 3-point and 4-point light type only. No borders or boldface type. Minimum 1 inch. CARDS OF THANKS or MEMORIALS—Single paragraph style, \$1.50 per insertion for 50 words or less; 3 cents per word beyond 50 words. COPY DEADLINE—1 p.m. Tuesday week of publication.

GAR - NETT'S
Flower & Gift Shop
Your Friendly Florist
112 E. Middle St., Chelsea
PHONE 475-1400
Funeral Flowers
Wedding Flowers
Cut Flowers (arranged or boxed)
Potted Flowering Plants
Green Plants - Corsages
WE DELIVER x9tf

Custom
Kitchen Cabinets
and
Formica Tops
Made to Order
475-2857 x2tf

A-1 USED CARS

'72 PINTO Station Wagon.
'71 THUNDERBOLT
'71 MERCURY 4-dr.
'70 LTD hardtop.
'70 FALCON 2-dr.
'69 GALAXIE 4-dr.
'69 LTD 2-dr.
'69 MERCURY wagon.
'68 LTD 4-dr.

Check Our New Triangle Truck Lot

At intersection of M-52 and Old Manchester Road

'72 FORD 1/2-ton.
'71 FORD 1/2-ton.
'70 FORD 1/2-ton.
'68 CHEVROLET 1/2-ton.
'66 GMC 1/2-ton.
'65 FORD 1/2-ton utility.

PALMER FORD

SINCE APRIL 1912

Ask For:
JOHN POPOVICH
MATT WILLIAMS
DON LAWHORN
LYLE CHRISWELL x44tf

Chelsea Associated Builders

Custom Building and Remodeling.
Over 20 years experience.
Call 475-8182. 44tf

WANT ADS

PROFESSIONAL CARPET cleaning service expanding to Washtenaw county. All sizes and types of carpets cleaned, day or night. Call (517) 522-4337 for free estimate. 42tf

SPECIAL—Ceramic tile bath, 4'x8', 4" high, materials and labor. \$179. (1) 483-4615. x47

ALLSTATE INSURANCE

AUTO - BOAT - COMMERCIAL

LIFE - HEALTH - HOME

Phone Eves. or Week-ends for

N. H. MILES, Agent
GR 5-8334 x2tf

Siding, Roofing and Gutters

Reasonably priced and licensed.

Mills

Construction Co.

Call 851-8657

for free estimates. 40tf

CHELSEA

QUALITY HOME with 3 bedrooms, dining room, family room, lots of space for recreation room, all on 10 acres. 2 fireplaces.

\$28,900 — 3-bedroom ranch near high school, with full basement, 2-car garage.

310 MIDDLE ST. — 3-unit income with all new plumbing, wiring, heating. Very clean, close to shopping.

NORTH LAKE — Summer cottage with 75 feet frontage on the lake. Priced to sell at \$17,500.

SELECTED natural setting for this 2,600 sq. ft. bi-level on 10 acres. 4 bedrooms, family room, dining el, 2 1/2 baths.

CAVANAUGH LAKE — 3-bedroom with frontage on the lake.

HI-LAND LAKE — \$23,500. 1-bedroom with space for 1 or 2 more. Aluminum siding. Year 'round home.

Vacant

BUILDING SITES

Scio Church Rd. — (3) 10-acre parcels.

Lima Center Rd. — (2) 15-plus and 16-plus.

Bethel Church Rd. — 11 acres.

Williamsville Rd. — (6) 10 and 15 acres.

Ivey Rd. — 20 acres.

Fletcher & I-94 — 31 acres.

North Territorial Rd. — 38 acres.

WANT ADS

KNAPP SHOES

For Cushion Comfort

Robert Robbins

475-7282 48tf

CALL FRANK for all your carpet cleaning jobs, morning or week-end. Needs only 3 hours to dry. Only 10c per square foot. Phone now for free estimate, 761-4328. All work guaranteed. 33tf

D&G Allen Excavating

Septic Tanks and Drainfields

Back Hoe and Dozing

Sand, Gravel and Topsoil Hauled

Phone (517) 851-8386

or (517) 851-8278

43tf

WEDDING INVITATIONS—Chelsea Card & Gift Shop, 116 S. Main St. 475-7501. 50

FOR SALE — Indian cents, postcards, books, foreign coins, Australian opals, and other articles. Lawrence E. Guinan, 1371 Sugar Loaf Lake. Call 475-2317. x37tf

DEMO

'73 DODGE Polara Custom 2-dr. hardtop, 360, auto., p.s., p.b., air cond., vinyl roof, rear speaker. Save

'73 PLYMOUTH Satellite Sebring Plus 2-dr. hardtop, 318, auto., p.s. red with white buckets. Save

Previously Owned Autos

'72 GOLD DUSTER, 225, auto., p.s., radio, 6,800 miles. \$2,495

'71 DUSTER 340 sport coupe, auto., p.s., rallye wheels, vinyl roof, RW tires. \$2,195

'70 CHALLENGER RT 2-dr. hardtop, 383, auto., rallye cluster and suspension. \$1,995

'70 DUSTER, sport coupe, 225, 3-speed, radio, new white sidewall tires. \$1,295

'70 PLYMOUTH Satellite 2-seat wagon, 318, auto., p.s., p.b., air cond., 27,000 miles. \$1,995

'70 DODGE Super Bee 2-dr. hardtop, 383, auto., p.s., rallye wheels, black and sharp. \$1,695

'69 CHRYSLER New Yorker 4-dr., full power, air cond., vinyl roof. \$1,695

'67 FORD Falcon station wagon, V-8, auto. \$295

'67 DODGE Coronet 500 convert. 383, auto., p.c., very clean. \$995

'65 TEMPEST 4-dr. 6-cyl., auto., good transportation. \$295

TRUCKS

'71 DODGE D-100, 318, auto., step bumper, radio, junior WC mirrors. \$1,995

'69 DODGE D-200 pick-up, 318, 3-speed, junior West Coast mirrors, radio, new paint. \$1,195

CHEVY 21-ft. Camper Van, 6 cyl. engine, 3-speed trans., bunks, dinette. \$395

Village

Motor Sales, Inc.

IMPERIAL - CHRYSLER

DODGE - PLYMOUTH

Phone 475-8661

1185 Manchester Rd., Chelsea

Hours: 8 a.m. to 6 p.m.

Tues. thru Fri. Until 9 Monday.

9 a.m. to 2 p.m. Saturday. x44tf

SHARPENING SERVICE

Mower blades, scissors and saws.

165 E. Middle, Chelsea

Phone 475-1227 x47

LOST in vicinity of M-52 and Clark Lake Rd.—Two male puppies, mixed breed. One black and white, other black, white and brown. Got them for our son. Please call 475-7683. x44

1971 SUZUKI T250 Husser street bike, 2,600 miles. Adult-owned, like new. \$500. Call 475-1079 after 2 p.m. 44

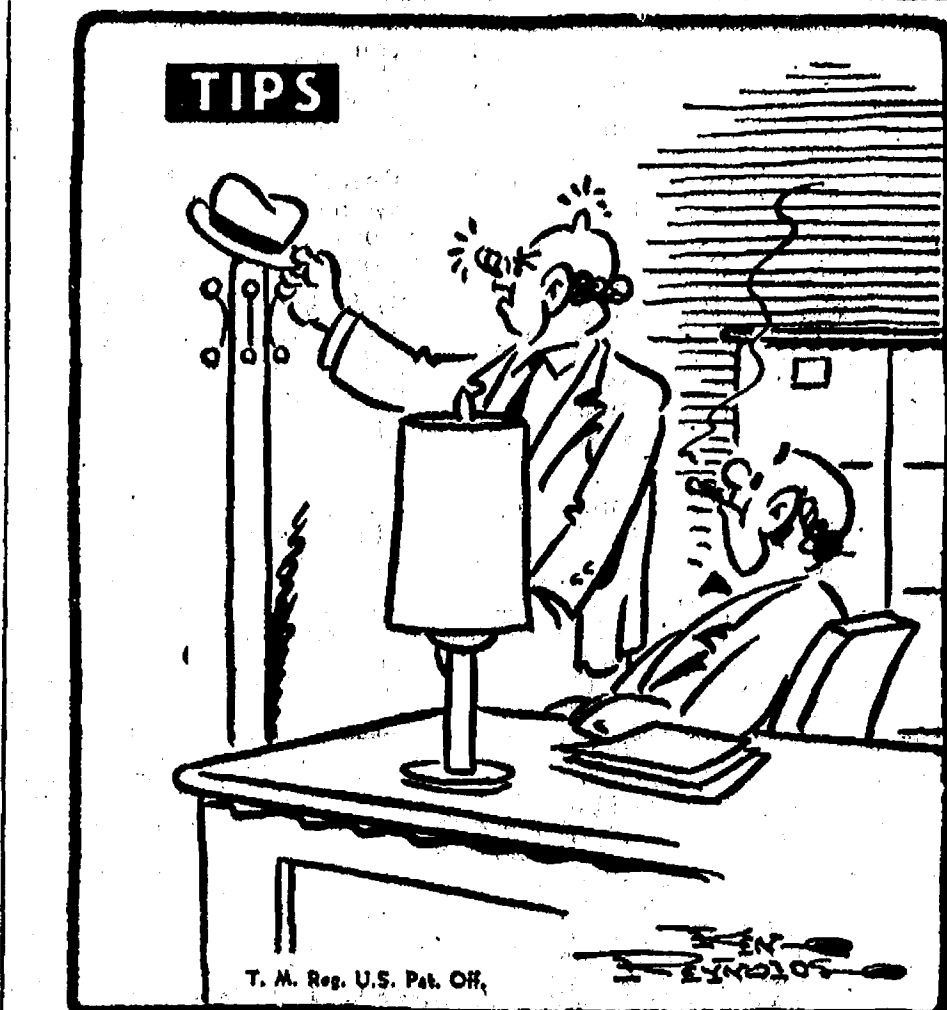
ELECTROLUX VACUUM CLEANERS

SALES and SERVICE

JAMES COX

Ph. 428-2931 or 428-8221

Manchester



"The vitamins my wife got in the Standard Want Ads sure fueled me!"

WANT ADS

BOWLING SNOW REMOVAL Service, residential and commercial, low rates. Prompt and dependable service. Call evenings on the week days and all day on the week-ends. 475-2129. x37tf

Headquarters for
RED WING WORK SHOES
Foster's Men's Wear 40tf

CUSTOM BUILDING
LICENSED & INSURED
FREE ESTIMATES

TOTAL CONSTRUCTION SERVICES

—Residential, commercial and industrial
—Garages
—Remodeling - Additions
—Aluminum Siding
—Roofing
—Trenching

SLOCUM CONTRACTORS & BUILDERS
Serving Washtenaw County
For Over 20 years
20700 OLD US-12
CHELSEA
Phone 475-8321 or 475-7611 22tf

New and Remodeling
Residential
Carpenter Contractor

M. A. LAWRENCE

Ph. 475-1106 x20tf

WEDDING INVITATIONS—Chelsea Card & Gift Shop, 116 S. Main St. 475-7501. 50

REAL ESTATE FOR QUICK SALE

Call 475-8563

Or come to

616 South Main St. Chelsea

Kern Real Estate

BROKER

Phone 475-8563 44tf

WANT ADS

Signs Painted
475 - 7391 21tf

WEDDING INVITATIONS—Chelsea Card & Gift Shop, 116 S. Main St. 475-7501. 50

BIKE FOR SALE—Maroon Spider Sting-ray with front hand brake. Phone 475-2033, ask for Mike. -44

THORNTON

475-8628

GOLF COURSE FRONTAGE — 3 bedrooms, family room, fireplace. All brick. Sharp. \$53,900.

VILLAGE—Beautiful colonial bi-level, dining room, family room, 3 bedrooms. \$46,500.

OLDER HOME—Good location, 3 bedrooms. Lots of living space. \$31,900.

JOSLIN LAKE — 2 bedrooms, air conditioned, great for retirement. \$32,000.

VILLAGE—Lovely redecorated 7-room home with fireplace, new kitchen. \$35,500.

CARPETED—Nice starter home or retirement home close to Village Center. \$27,700.

100 YEARS OF CHARM—Lovely home in Village of Stockbridge on large shaded lot, 12 rooms, lots of space. \$44,900.

BUILDING SITES:

5 acres—\$4,500.

10 acres—\$14,500.

12 acres—with pond: \$17,500.

10 acres—wooded: \$15,000.

THORNTON

328 S. Main Realtor Chelsea

Eves:

Bob Riemenschneider 475-1469

John Pierson 475-2064

Helen Lancaster 475-1198

Bob Thornton 475-8857 44

WANT ADS

CALL NOW
SAVE \$\$\$
Greenwood

for

Siding - Remodeling

FREE ESTIMATES

WANT ADS

Automotive Rust Proofing Cars and Trucks

Village Motor Sales, Inc.
IMPERIAL - CHRYSLER
DODGE - PLYMOUTH

Phone 475-8861
1185 Manchester Rd., Chelsea
Hours: 8 a.m. to 6 p.m.
Tues. thru Fri. until 9 Monday.
9 a.m. to 2 p.m. Saturday

BARN PAINTING

For the lowest prices around.

Call
Trens Enterprises
781-0655

WANTED — People interested in second or third income, part time in their own home. Earnings from \$100 to \$1,000 per month. For appointment phone 475-8676 between 4 and 6 p.m.

WE want someone in this area who has mechanical ability for sales and service. Earning opportunity is quite high on this job regardless of part-time or full-time. No investment. For complete information write C. E. Woodard, 528 Second St., Ann Arbor, Mich. 48103. An Equal Opportunity Employer.

C—Custom Built Homes
O—h! We Remodel too.
U—can count on us
N—o Job Too Small
T—rim Inside & Out
R—ough-in Only If
Y—ou Want to Finish

S—iding Aluminum, 5" Gutters
I—mmediate Attention
D—ALE COOK & CO.
E—stimates, Free

BUILDERS

Please Call
475-8863

DALE COOK

YOUNG MAN to wash cars and clean up garage. Must have good driving record. Call Mr. Spaulding at Lloyd Bridges Chevrolet, 475-1873.

FRENCH HORN, cornet and trombone for sale. For information, call 475-1128 after 3 p.m.

WANTED—Dependable boy for doing yard work. For Rent—2-bedroom apartment, mature couple only. Reference required. No pets. For Sale—Tappan 400 electric range with pull-out burners. 475-2818.

GET YOUR POOL READY for summer. Complete line of swimming pool chemicals. 10% discount on all over \$10.00. Underground pools installed, complete. Prices start at \$3,200. Hilltop Plumbing, Inc. Ph. 475-2949.

HOME-SITTING — Do you need a responsible married couple to take care of your home this summer? Please call 475-8857.

PIANO LESSONS in your home. Master's degree, beginners to advanced. Ph. 662-5850 before 9 a.m.

HOMESITE, 145 by 383 feet on north side of Old US-12 in first block east of Main St. A. Pommerening, phone 475-2787.

WANT ADS

LEHMAN WAHL
Land Appraisal
Residential
and Farm

17087 West Austin Rd.
Manchester, Mich.
Area Code 313
425-8886

FOR REAL DOLLAR SAVINGS be sure and see us before you buy any new or used car. Palmer Motor Sales, Inc. Your Ford Dealer for over 50 years.

REPAIR SERVICE for household refrigerators, freezers and garbage disposers. Call Bill, 428-5314.

PORTAGE LAKE ACCESS

4 BEDROOMS, large dining room. Beautifully maintained. 1500 sq. ft. living area. Dexter schools. \$27,500.

Eibler & St. Amour
204 E. Washington
Ann Arbor
REALTORS
789-0650

HARRY HASENFRATZ
878-6834

WARREN McLEAN
971-6615

FOR SALE—2 Huff Spider bikes. 8-speed and 5-speed. Call 475-1505.

FOR SALE — 15-ft. fiberglass boat. Tilt trailer. Johnson 35 h.p. electric start. \$325. 475-2888 after 4 p.m.

LADY WANTED to stay with an elderly lady. Room and board and pay. Contact Mrs. Alvin Wahr, RR 2, Chelsea, Mich.

Used Furniture

80-INCH 2-cushion sofa \$19.95

72-INCH 3-cushion sofa \$39.95

2 MODERN tub chairs, colorful print, good condition, ea. \$39.95

MODERN dining table, extension top, and 2 chairs, honey tone mahogany \$29.95

48" DINETTE TABLE. Extension formica top, and 4 chairs \$29.95

MODERN DESK CHAIR—Walnut finish, like new \$9.95

MODERN TABLE LAMP—44-inch walnut finish wood base, like new \$9.95

OCCASIONAL CHAIR, good condition \$19.95

DECORATORS CHAIR, oyster color or tapestry. Good condition \$35

Merkel Bros.

HILLTOP, INC.

Septic tanks: 600 gal. to 2,000 gal., and drain fields, installed to county code. Basements; road building; trenching; 12" and up. Buried oil tanks: 300, 500, and 1,000 gal. Trucking, stone, road gravel, and top soil. Estimates and reasonable rates. Licensed, bonded and insured.

1414 South Main
Chelsea, Mich.
475-2949

BODY ALL DEODORANT—Trial size 3 oz., 39c at Chelsea Drug Store.

MOBILE HOME for sale — 1970 Champion, 12'x60', clean, 2 bedroom, range, refrigerator and carpet. Hookup for washer and dryer. \$3,600. Must move. 475-8168.

NEAR STOCKBRIDGE—78 acres with many farm buildings, 4-bedroom home. Call for more information about this property. LF 1349.

CALL ABOUT vacant parcels and vacant water-front. We have new listings each day and will gladly tell you about them.

WANT ADS

FORMAL WEAR RENTAL SERVICE

Proms - Weddings - Special Events
6 different colors.

Foster's Men's Wear

NOW Full Time Complete Body Shop Service

Stop in For An Estimate

PALMER FORD
222 S. Main St.
475-1301

FOR RENT—Fair Service Center for meetings, parties, wedding receptions, etc. Weekdays or weekends. Contact John Wehnitz, phone 475-1518.

HAMMOND ORGAN teachers wanted to teach in their own homes. Call Grinnell Brothers, Ann Arbor, 662-5687.

CLOGGED SEWER

Reynolds Sewer Service

We Clean Sewers Without Digging
Drains Cleaned Electrically

FREE ESTIMATES 2-YEAR GUARANTEE

Phone Ann Arbor NO 2-5277

CAR & TRUCK LEASING For details see Lyle Chriswell at Palmer Motor Sales, 475-1301.

DIAMOND ROOFING, reroofing and repainting. Roof louvers installed. Gutters cleaned. Licensed roofer. Call 475-1129.

Fireplace Builder

Field stone mason, block and brick mason; tuck pointing.

FREE ESTIMATES

Call 475-8025 after 8 p.m.

Patrick Grammatico

PATCHING AND PLASTERING

Call 475-7489.

Howell Town & Country, Inc.

JUST A 5-IRON shot from the golf club, this home with a well-carved for feeling, 3-bedroom, living room with fireplace, family room, office or extra bedroom, 2 baths, on 2 lots. One fence for children. LHP 1293.

DURLEX on 1/2 acre, all electric, carpeted, 2 bedrooms, \$165 rent for each unit. Priced to sell at \$32,000.

154-ACRE FARM near Gregory, interior of house extensively remodeled on blacktop road, now a Grade A dairy farm. LF 1150.

97 ACRES on Roberts Rd. High rolling, older farm house. 1/2 mile frontage. Land contract available. LF 1327.

NEAR STOCKBRIDGE—78 acres with many farm buildings, 4-bedroom home. Call for more information about this property. LF 1349.

CALL ABOUT vacant parcels and vacant water-front. We have new listings each day and will gladly tell you about them.

Howell Town & Country, Inc.

CARLIE WIEDMAN
Local Representative
Phone 878-3177
428-3758 evenings

BODY ALL DEODORANT—Trial size 3 oz., 39c at Chelsea Drug Store.

DANCE

Sponsored By
CHELSEA ROD & GUN CLUB

Saturday, April 21
8 p.m. to 1:30 a.m.

Musie By "THE RESEARCHERS"

Snacks, set-ups, ice and lunch furnished.
\$6.00 per couple.

PUBLIC INVITED
For tickets and information
Call 475-8756

WANT ADS

FOR SALE—Carnet, good condition, \$100. Call 475-8563 after 4 p.m.

ROBERT PATRICK—Building and home improvement, cement work and sea walls. Ph. 475-1077.

Gem Travel Trailers and Campers

PICK UP COVERS

4" \$100.00
28" \$179.00 and up

Triangle Sales
Chelsea 475-4802

ALCOA ALUMINUM SIDING specialist. Michigan since 1938. All exterior wood covered. Beautiful look - Insulation - Maintenance free. William Davis, 668-6885.

BABYSITTING in my country home, Cavanaugh Lake Rd. Ph. 475-6838.

FENCE — Chain link or redwood fence, all sizes. Material sold for your installation or we will install it. Call (517) 522-4387 for free estimate.

WANTED — People interested in 2nd or 3rd income in their own home. Earning from \$100 to \$1,000 a month. For appointment call 475-2558.

HELP WANTED—Factory workers. Female preferred. Employment office open 9 a.m. to 2 p.m. VISCOP Corp. 738 State Circle, Ann Arbor.

VACUUM CLEANERS — Electro-lux, authorized sales and service. James Cox, Manchester. Ph. 428-2931 or 428-8221.

CAR RENTAL by the day, week-end, week or month. Full insurance coverage, low rates. Call Lyle Chriswell at Palmer Motor Sales, 475-1301.

Complete Body Repair Service

Bumping - Painting
Windshield and Side Glass Replacement

Free Pick-up & Delivery
Open Monday Until 9

CONTACT DON KNOLL
FOR FREE ESTIMATE

Village Motor Sales, Inc.

IMPERIAL - CHRYSLER DODGE - PLYMOUTH

Phone 475-8661
1185 Manchester Rd., Chelsea

Hours: 8 a.m. to 8 p.m.
Tues. thru Fri. until 9 Monday.
9 a.m. to 2 p.m. Saturday

UPSTAIRS APARTMENT for rent. Single or couples only. No pets. Call 475-8210.

BEAUTIFUL needed immediately at the Red Carpet Coiffures, corner of Baker and Hudson in Dexter. Clientele waiting. Apply in person.

FOR SALE—70 Honda CB450. Ph. 475-2766.

Quality Evergreens

Spreading and Hicks gews, pyramid and globe arbor vitae, Pfitzer, bush clumps, mountain ash. Flowering crab, Norway and crimson king maples. Dig your own. All State Inspected. Free Estimates.

Faist's Evergreen Nursery
11362 Trist Rd., Grass Lake
Phone (517) 522-4588

CASHIER WANTED

Must be 18 years of age or over.

Apply in person.

Rick's Market

BODY ALL DEODORANT—Trial size 3 oz., 39c at Chelsea Drug Store.

HOUSE WANTED to buy, in or near Chelsea. 3 or preferably 4 bedrooms. 1,500 to 2,000 sq. ft. Ph. 662-9802.

DAILY RIDE to Ann Arbor wanted. Working hours, 9-6. Ph. 475-8411.

FOR SALE—Garden Mark riding lawn mower. Excellent condition. \$76. 475-8005.

WANTED — Baby-sitting in my home. Ages 4 to 6. Call anytime. 475-1250.

FOR SALE—Youth bed with spring and mattress, in excellent condition. \$25. 475-1088.

O.E.S. BAKE SALE at Masonic Temple, April 21, 9 a.m.

SPOTS before your eyes—on your new carpet—remove them with Blue Lustre. Rent electric shampooer. \$1. Dancer's.

RESPONSIBLE SECRETARY wishes to rent a 1-bedroom apt. 475-2550 after 5 p.m.

WANTED—Work for church youth group. We do almost anything. Call 475-2188.

WANTED—Late 1940's to early 1950 automobiles. Would prefer running condition, will accept others. 764-1094.

HOUSE FOR SALE—Five rooms, suitable for moving. Call owner. 1-474-8552.

FOR SALE—White summer wedding gown, reusable. Size 10. Call anytime, 769-0058.

WANT ADS

ELECTRICAL WIRING of all types New and rewiring. Ph. 428-4855.

EVINGER REAL ESTATE, Alpine St., Dexter. Phone 428-5518.

SEE US for transit mixed concrete. Klumpp Bros. Gravel Co. Phone Chelsea 475-2550, 4920 Loveland Rd.; Grass Lake, Mich. x404f

ROCKING M RANCH Arabian and Morgan studs service. Young stock for sale. 8080 N. Territorial Rd., Dexter 428-5110.

ONE BEDROOM apartment for rent. Includes utilities. 665-4481, days only.

HELP WANTED—Reliable middle-aged woman for housecleaning, 1 to 2 days per week. Dexter, Chelsea area. Ph. 475-3678.

TRAVEL TRAILERS — 13-ft. and up; 10355-14, trailers. John R. Jones Trailer Sales, Gregory, Mich. Phone 498-2655.

WANTED — Carpentry work, any type. Charles Romine. Ph. 475-7474.

FOR SALE—1 acre building sites, Chelsea area. Phone 475-2828.

STOCKBRIDGE, 13 acres, commercial, on M-52. (517) 851-8144.

WANTED TO RENT or buy standing hay for the coming season. Ph. 475-2771.

PIANO TUNING, Chelsea and area. Facilities for reconditioning and rebuilding. Used piano sales; reconditioned grands and verticals. E. Ecklund, 426-4429.

ASPHALT PAVING

Driveways - Parking Areas
Landscaping - Site Work
PREVO EXCAVATING CO.
(517) 851-8603 or (313) 458-1027

FOR RENT — Extra nice 3-room upper. Very clean, fully carpeted. Nice for quiet refined lady or couple. 475-7688.

Burglars are Active

Protect your home or business with a low-cost custom designed alarm system.

Call 475-7322
for demonstration.

BABY-SITTER wanted in my home beginning May 15 for 8 a.m. to 4 p.m. five days a week. \$50 per week. 426-4997.

CAKE DECORATING can be fun. Learn at The Cake Shop School of Cake Decorating, Tecumseh. Class beginning May 1. Call 423-7733 for registration or information.

APARTMENT FOR RENT in Chelsea. One bedroom, carpeted, stove, refrigerator, central vacuuming, air conditioning. Phone 1-474-8552.

ACCORDION FOR SALE — 120 bass contessa. Good for bands or beginners. Sheet music with it. Good condition. Call anytime, 769-0058.

WANTED TO BUY—Old toy Lionel trains, any condition. Phone 426-4736.

FOR SALE—36" aluminum self-storing door. Good condition, \$20. 475-1089 after 5 p.m.

BOLLEN'S GARDEN TRACTOR, 3 attachments: sickle bar, lawn mower, clod buster. Phone 475-7967.

EASTER SURPRISE—Put a kitten in your Easter basket this year, instead of candy. Adorable, healthy, 6-week-old treasures. Call 475-2855.

FOR SALE—GE 40" white electric range. Large oven and drawer storage. Phone 475-8289.

FOR SALE—15-ft. Clyde boat and trailer with 75 h.p. Evinrude motor. Mint condition. Best offer. —x44

CHELSEA SCHOOLS—By owner. 2,900 square ft. ranch. Included attached apartment or professional office, 6 acres, pond, trees, new barn. Mid 80's. Call 475-2543. x44f

SHOES FOR REPAIR picked up and delivered every Monday at Parish's Cleaners, 113 Park St. x45f

WANTED—Married couple needed to provide residential foster care in own home for adolescent youth. For information call Patrick Clarke at 973-1260.

THANK YOU
The family of Helen Stapish wishes to thank relatives, friends, neighbors and OES for their kindness during our loss.
Mr. and Mrs. Harold Adams.
Mr. and Mrs. Donald O'Dell.
Clara Stapish.
Maria Stapish.

THANK YOU
A Happy and Joyous Easter to all the wonderful staff at Chelsea Community Hospital. Thank you all for the wonderful, loving care given to our loved one.
The family of
Elmer "Junior" Trolz.

CARD OF THANKS
We wish to thank everyone for the visits, cards and flowers during Adolph Duerr's stay in St. Joseph Mercy Hospital, the Chelsea Medical Center and since his return home. Thank you to the Rev. W. Slebert for his visits and prayers, the American Legion for the use of a hospital bed, the Uphorn Company in Ann Arbor for providing the excellent home-nursing care, to Alfred Lindauer and last, a very special thank you to all our wonderful friends for standing by and helping us in so many ways through this long and difficult time. It was all deeply appreciated. A blessed Easter to all.
Sincerely,
Lina Duerr and daughters.

Track Team Runs Away With Novi

(Continued from page one)

38'4" for a third place. Dan Heydlauff earned a third for a 11:43.1 time in the two-mile run, and Bill Tite took a third in the high jump, falling behind Sweeney even though he also made a 5'10" effort.

Tom Thomson Listed in Nation's Top Athletes

Tom Thomson, No. 2 singles player for the Kalamazoo Hornet netters, has been chosen as one of the two Kalamazoo College athletes to appear in the 1973 edition of Outstanding College Athletes of America.

The selection was based on outstanding athletic accomplishment coupled with leadership in community service and campus activity.

Thomson, a senior at "K," is a son of Mr. and Mrs. John R. Thomson of Grosse Pointe Park. A four-year member of the Hornet tennis squad, he is the No. 2 singles player and has the same role in doubles.

In 1972, Thomson was the last of the Hornet netters to be eliminated in the NCAA College Division Tournament.

Baseball Win...

(Continued from page one)

quiet innings before Chelsea scored in the fourth on a walk by Craig Alter. Alter stole second and made it to third on an error.

With two outs, Dan Houle squeezed him home.

East Tawas countered with a score in the sixth, but was powerless in the bottom of that inning when Chelsea tallied five more.

With one out, Mike Nadeau hit a homer which was followed by six consecutive walks. A sacrifice fly brought in the remaining runs to close out Bulldog scoring.

In the top of the seventh, East Tawas brought in three more men before retiring in defeat.

Coach Carl Genske commended Howard Haselschwardt's strong pitching that struck out 10 and walked three. "Not bad for the first time out," said the coach.

Bulldog teammates, in their batting order, are: John Houle, John Mann, Mike Nadeau, Craig Alter, Jeff Daniels, Dave Tucker, Dan Houle, Howard Haselschwardt and Jeff Sprague.

Chelsea is scheduled to play another home game on Monday, April 23, against Manchester. They will travel to Dundee on Tuesday, and return home to face Dexter on Wednesday. All games start at 4 p.m.

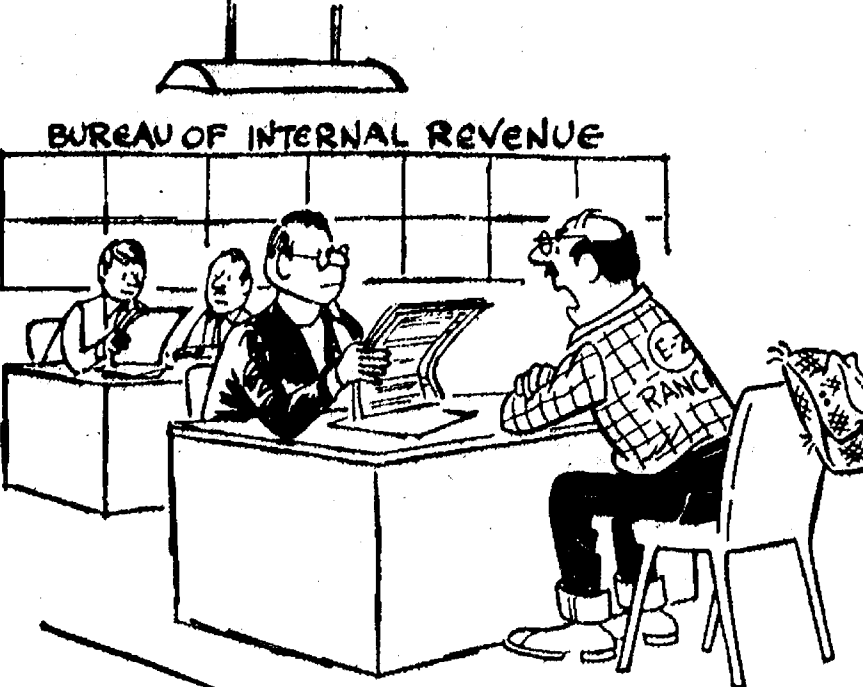
Summer Softball

(Continued from page one)

basis. Those playing on teams last year should not wait until the deadline because their place will not be reserved.

Those interested in umpiring softball games should contact Larson at the above number.

LAFF OF THE WEEK



"Do you mean to tell me that after paying taxes all these years, I can't list the government as a dependent?"

TODAY'S THOUGHT

By LOUIS BURGHARDT

On the first Palm Sunday centuries ago, a Man from Galilee created much attention, aroused intense emotion. Many of those present had heard of Him and joyously welcomed His arrival in Jerusalem.

On the following Friday, evil people crucified Him. He was placed in a tomb in what was supposed to be His final resting place. Three days later the tomb was empty! He was gone! He had risen from the dead as He said He would! It startled people! His disciples and friends were quickly sought. The news of His resurrection had to be made known, had to be shared.

Christians have shared that news ever

Modern School Library Much Changed From Old Days To Better Serve Students

Last week, National Library Week as proclaimed by President Richard Nixon, was an appropriate time to observe the many activities that take place within the bounds of the modern school library. School libraries, now called media or materials centers, are much changed from the quiet, almost static places many readers remember from their school days. At Beach Middle school library, a book is only one of many sources of information.

It is a full-time job to select, organize and distribute the materials to multi-media resources of a modern library, but it is a task Mrs. Mary Ann Paulin is well qualified for. Her teaching certificate, an MA degree in library science and an Education Science degree in instructional media equip her to know which books, pamphlets, transparencies, records, filmstrips, tapes and magazines would be the most useful in conjunction with Beach school's curriculum.

Once the materials are ordered, Mrs. Paulin organizes them and instructs the students in the art of finding and using the materials themselves.

While these tasks alone are enough to keep Mrs. Paulin busy in the library, her job is by no means restricted to the library itself. She works closely with teachers to assure that materials that supplement class projects are available in the library.

Recently, for example, she and Mrs. Jane Cummings, a French teacher, planned an assignment for the 8th grade French students on the provinces. The assignment, which requires the students to present facts about

one of the provinces in written, oral and visual form, requires both research in the library and the use of library equipment like tape recorders, slide projectors and records in the presentation of the report.

Thus while students learn about France, they learn how to use library facilities.

Mrs. Paulin advocates the multi-media approach to learning because she believes it offers a richer learning experience for the student. "Students prepare reports more carefully," she says, "when they have to record them. They also stay within time limits better. They enjoy learning from one another as they prepare the projects together." The posters and recordings also offer opportunities for creativity, she believes.

Because Mrs. Paulin and Mrs. Cummings planned and executed this project together, they will evaluate it together.

In addition to taking part in class projects, Mrs. Paulin and her media center are active in encouraging students to read. Mrs. Paulin compiles lists, for example, of biographies, sports stories or books on modern teens to make it easier for students to find the books they might enjoy reading. She also gives Book Talks to classes before they have a book review due. In these talks she summarizes various books and gives reading suggestions. This requires the librarian to spend many a night reading the latest in children's literature.

Libraries may not be what they used to be, but they are an important part of the modern student's education.



DEATH OF THE WRITTEN WORD? Not quite. These 8th grade French students were required to write their report as well as tape it, but it looks as if the taping might be more fun. After researching their topic, Gail Gilbreath (front) and, from left, Emily Bonus, Nancy Rossbach and Annette Gaken recorded their findings. The tape will explain a large poster they have done to illustrate the major features of their province.



SIGHT AND SOUND: Kim Brown, standing, and Brenda Salyer, sitting, have found another media center tool, a student-sized filmstrip viewer, and a record, in their quest for information about France.



A PLACE FOR READING AND WORKING: Here, from left, are Karen Trinkle, Kathy Burns, Julie Chapman and Lisa Walworth putting the finishing touches on the poster they are preparing for Mrs. Jane Cummings's 8th grade French class.



DECORATIVE EDUCATION: Mrs. Jane Cummings' 8th grade French class is surrounded by large, bright posters depicting the geographical features, major industrial and agricultural products and famous cities of each of the French provinces. The poster on the left, the work of Lesley Clark, Laura Rademacher, Barb Hinderer and Mary Spencer illustrates the characteristics of Gascony. The Loire Valley is the subject of the poster on the right, the work of Anthony Houle, Bruce Stubbs, Don Nadeau and Bob Fleher.



TREKING THROUGH ALSACE: Because the French National Anthem, "The Marseillaise," was written while soldiers marched through Alsace, the boys studying that province for their French class assignment wanted to add the song to their poster. Here Don Morrison, one of the group, finds the score in the library's vertical file. His French teacher, Mrs. Jane Cummings looks on. Both she and Mrs. Mary Ann Paulin have been available to help students use library facilities while carrying out their class project.



AN ENLARGING EXPERIENCE: Leslie Clark (left) and Laura Rademacher found a map of their province in an atlas and are using an opaque projector to shine an enlarged version on the wall. They will trace it and use the enlargement on their poster, part of their French class assignment.



BEACH MIDDLE SCHOOL'S MEDIA CENTER is both a research area and a show place. From left, Marsha Prinzing, Sherry Esch, Lisa McKaig and Andy Gulyas browse through the new selection of paperbacks while mobiles, the result of Mrs. Koch's 6th grade's research on Mediterranean countries, decorate the background.



BOOK TALKS are just one of Mrs. Mary Ann Paulin's many ways of engaging middle school students in the world of books. Mrs. Sue Craig's 8th grade English class is shown here listening to Mrs. Paulin's reading suggestions.

SOUTH ELEMENTARY SCHOOL NOTES

FIRST GRADE—

Room 4

Teacher: Miss De Vries
Reporters: Tami MacDonald and Carol Watson

Some of the class students went on a trip during their spring vacation. Danny Waldyke went to Arizona. David Settle, Glenn Sprigg, Keith Crawford, and their families went up North. Susan Oosterle, Kevin Feldkamp, Lisa Nix, and their families went to Florida.

Todi MacDonald had her appendix out. The class is studying their five senses.

Room 1

Teacher: Mrs. Schiller
Reporters: Dana Wright and Mike Wood

John Craft has the only April birthday. Glen Prinzing brought in a duckling. In math the children are studying geometry and measures. In health we have been learning about the five senses. We now know how important our eyes, ears, nose, mouth and hands are.

For Easter we will be making bunnies and weaving baskets.

Room 3

Teacher: Mrs. Thodeson
Reporters: Dawn Fowler and Denise Geddes

Richie Cattel had a birthday party with cupcakes, balloons and M and M's, etc. He is now seven. Sherry Cook went to New York and Lansing. Edward went to Wayne.

The children get stars on their hands for knowing words on word cards. They are learning compound words. The class has an add-a-matic. They are using it to add tens. They have also made pussy willow pictures.

The class is getting ready for Easter. They made birds and an Easter basket that they filled with eggs. Brian Donovan made an Easter egg tree.

Joyleen brought in the records, Hansel and Gretel and Winnie the Pooh. Gary brought in a model canoe from the Fig Islands. Jody Klink brought her Raggedy Ann and Andy dolls.

Jay Freeman is going to Tennessee. Sherry Salyer has a new baby brother.

Room 2

Teacher: Mrs. Thornton
Reporters: Denise Geddes and Sarah Haselschwardt

Mrs. Thornton's class got new Think-and-Do reading books. In math they are regrouping sets to make ten. They are learning how to decode and unscramble words in their chatter books. The class is working with the parachute in Physical Education class.

The class is making rabbits out of blown-out eggs. Their guinea pig, Jennifer, had three babies which are two weeks old. The children like them.

SECOND GRADE—

Room 5

Teacher: Mrs. Lopez
Reporters: Denise Geddes and Gloria Pearson

The children are studying plants in science, and each has a milk carton filled with dirt and flower seeds. They have a bulletin board with pictures they have drawn of

seed growth and flowers. They are learning what plants need to live and grow. They are studying the leaves of many trees and learning to recognize many different flowers. They are also growing radish seeds, and Todd Anderson brought a planter with tomato seeds.

The children have made story books, and each is filling his book with stories written by himself. Some stories are true and others are about scary monsters.

Room 10

Teacher: Mrs. Grinnell
Reporters: Dana Wright and Dan McGill

The April birthdays are Mike Muck, April 22, and Stephanie Harvey, April 11. The class has been changed around, and they've switched reading groups. Some of the names of them are: the War Lords, Munsters, and the Road Runners.

Mrs. Grinnell and the children in her class are reading a book called "Charlotte's Web." The children are learning to alphabetize words.

THIRD GRADE—

Teacher: Mrs. Schmidt
Reporters: Sabrina Woodward and Teresa Hoffman

Over spring vacation many girls went to Melody On Ice. Margaret Sweet went to the Kellogg cereal plant. Karen Miller went to the Henry Ford Museum in Greenfield Village.

In art they painted and shellacked eggs for Easter. In Social Studies they are studying about Montana.

Happy Birthday to Margaret Sweet and Mike Stebelton.

MUSIC—

Teacher: Mrs. Dye
Reporters: Cathy Roy and Carmen Scripser

Mrs. Vander, our student teacher, is doing a song with the fourth graders' chorus which she composed. The fifth graders who will play in the band next year will soon be getting their instruments.

INSTRUMENTAL MUSIC—

Teacher: Mr. Fate
Reporter: Mike Lewis

All the students in Mr. Fate's class enjoyed themselves and learned a great deal about stringed instruments. Mike Lewis, Tom Gilbreath, Julie Smith, Faith Markle, Katie Donkin, Tracy Cattel and Diane Gaiser want to thank Mr. Fate for the marvelous job he has done with them. We are all very sorry he has to leave, but we're sure that Mrs. Palmery will do a good job.

Reporters: Kenneth Geer and Mike Minick

First and second grades folded butterflies and bugs out from paper and colored with crayons or water colors. Third grades made Easter eggs out of blown shells and folded paper.

Fourth grades made fish kites. Fifth grades are making wire sculptures, jewelry, and finishing their mosaics.



Kinder Klub Officers Elected For New Year

Kinder Klub met Tuesday, April 10, at the home of Mrs. Dan Ewald. Mrs. Loren Keezer was co-hostess for the evening.

Eleven members were present. One guest and past member, Sharon Robards of Grass Lake, also attended.

A slate of officers was voted upon. The officers for the 73-74 club year are as follows: Veretta Whitaker, president; Cherie Ziegler, first vice president; Nadeen Koch, second vice president; Carol Marshall, secretary; Mary Messner, treasurer; Laura Downer, auditor; parliamentarian; Jean Hafner, historian.

Four members of Kinder Klub will attend Spring Planning at Mt. Clemens, May 12. Playground equipment will be purchased and given to the kindergarten playground as the group's charity project for the year. The Spring Dinner will be held at Tom's Grill in Jackson on May 22.

A special evening was planned by the program committee for the 16th anniversary of Kinder Klub in honor of Therese Doll and Clara Ewald. Each was presented a charm necklace for remembrance of the past 16 years in Kinder Klub. The program committee read all the club's history. The theme for the special event was "This is Your Life, Kinder Klub."

Next meeting will be held May 8, at Mrs. Duane Downers.

GIRL SCOUT NEWS



TROOP 442—
We are busy working on the ToyMaker badge. We are making stuffed toys for the children at Mt. Hope Hospital. Mrs. Kvarnberg and Mrs. Schulze are helping us at our meetings.

The patients at the Stockbridge Nursing Home are enjoying tray favors made by our troop.

Jill James, scribe.

TROOP 169—
We worked on our Mother's Day projects. We made hats and played in a rhythm band. We also practiced some songs for the Father-Daughter banquet and our Mothers Day Picnic.

Kathleen Morris, scribe.

Winter temperatures in Antarctica can drop as low as 127 degrees below zero Fahrenheit.

Club and Social Activities

WOMAN'S CLUB

The regular meeting of the Chelsea Woman's Club was held Tuesday, April 10, at McKune Library. Twenty members were present for a business meeting conducted by the president, Mrs. Robert Koch. A social hour followed with refreshments provided by the hostesses for the evening, Mrs. LeRoy Hoffman and Mrs. Robert Allshouse.

The Woman's Club sponsored a welcoming tea for new people in the community on Wednesday, April 11, from 1 to 3 p.m. in the library clubroom. Chairman for the tea was Mrs. Eugene Duhamel.

MODERN MOTHERS

Modern Mothers Child Study Club met April 10 at the home of Mrs. Thomas Hodgson with Dotie Riemenschneider as co-hostess. Twenty members and two guests, Mrs. Kenneth Tillman and Mrs. Paul Weber were present.

Mrs. Russell Pichlik was welcomed as a new member. Dr. Daniel Peterson, an Ann Arbor pediatrician, discussed nutrition and other child problems. An Easter Egg Hunt will be held April 21, at 1 p.m. at Pierce Park for members and their children.

The next meeting will be April 24, at the home of Mrs. Vernon Otto. Tom Hodgson will present the program.

RUTH CIRCLE

Ruth Circle of the First United Methodist church met Wednesday, April 11, in the education room. Mrs. Mildred Grams joined the circle at that time. Mrs. Audrey Jarvis was a guest.

Hostesses for the luncheon were Mrs. Gale Wilson, Mrs. Ralph Harper and Mrs. Mac Packard.

After the business meeting was opened by the chairman, Mrs. Ralph McCalla, the secretary's report and treasurer's reports were read and accepted. Mrs. Edwin Gaunt reported on the activities of the Steering Committee of United Church Women.

The circle will hold a "white elephant" sale Sept. 12, for the improvement fund's benefit.

Mrs. Edwin Gaunt gave a reading from the "God Is" an Easter story from the "Ideals."

The next meeting will be May 9, at the Crippen Building. Mrs. Buxton and Mrs. Dolan will be hostesses. Mrs. Claude Pearson will head the program.

Fresh Rhubarb Now on Market Is Hothouse Grown

Don't avoid buying fresh rhubarb because it looks pale and uninviting, advises Macomb County Extension Director Jack Prescott.

Although less red and hearty than field-grown rhubarb, the Michigan hothouse rhubarb now in season is just as tasty and often less stringy, Prescott says.

Rhubarb that has wilted on the grocer's shelf may be revived simply by soaking it in cold water.

Michigan hothouse rhubarb, almost all of which is grown in Macomb county northeast of Detroit, is available from January through mid-May. Field rhubarb is in season in May and June.

One pound of fresh rhubarb yields about 2½ cups of sauce; two pounds will make an eight- or nine-inch pie. The leaves are not edible because they contain toxic oxalic acid.

Rhubarb plants are first grown outdoors for two years. Then the crowns (mature roots) are transferred in autumn to low-slung windowless sheds which are covered with manure for warmth. A harmless chemical called gibberellic acid is sprayed on the plants to "force" them to mature early in January.

Because they receive no sunlight, the plants have undersized yellow leaves and pale pink stalks. This forced rhubarb is often less tart than field-grown, Prescott says.

Michigan-produced hothouse rhubarb is becoming an "endangered species." At one time "Macomb county's sand-smear (sand-over-clay) soil produced about 75 percent of the world's hothouse rhubarb. Today, houses, apartments and commercial firms stand where rhubarb once grew.

Another factor is the demise of tradition. Macomb county rhubarb production used to be a close-knit family affair among residents of Belgian descent. Today fewer and fewer sons are taking up the business.

In 1955, 200 growers in Macomb county harvested more than five million pounds of hothouse rhubarb. Last year, production was down to one million pounds by 60 growers.

"Macomb county vegetable growers customarily paid for summer crop fertilizer and seed with income from their winter rhubarb harvests. Now, in submission to urban sprawl, they're cutting back on all crops," Prescott says.

Magic Mirror Beauty Salon

Open Tuesday thru Friday
9 a.m. to 9 p.m.
Saturday, 8 a.m. to 3 p.m.

PHONE 665-0816



PFC. MARY K. SLOCUM, daughter of Mr. and Mrs. Carmel Slocum of 325 Glazier Rd., has completed basic training at the Women Army Corp Center, Ft. McClellan, Ala., and has graduated from the Army's information school at Ft. Benjamin Harrison, Ind. She has now been assigned to the 1st Psychological Command Control Center, Fort Bragg, N. C. Pfc. Slocum is a 1972 graduate of Chelsea High school.

Advanced First Aid Course Offered By Red Cross

A Red Cross Advanced First Aid class has been announced by the Washtenaw County Red Cross Chapter. Set to begin Wednesday, May 2, it will meet at the Red Cross Chapter Headquarters from 7:30 to 10:30 p.m. weekly for six weeks. This is a special class scheduled to meet requests. It will likely be the last advanced class taught this year.

Students enrolling in the course must hold a current Red Cross Standard First Aid certificate and be at least 15 years of age.

There is no charge for the course which will be taught by Red Cross volunteer instructor Thomas Haynes. Students must have a Red Cross textbook, and supply their own triangular bandage.

To enroll call the Red Cross at 971-5300 Monday through Friday from 8:30 a.m. until 5 p.m.

One of Michigan's best-known self-help facilities is the Leader Dogs for the Blind School near Rochester. Supported by gifts to 150 local United fund campaigns, the school, a member service of the United Way of Michigan, provides dog guides for the blind and an intense training course for the new Leader Dog owners, many of whom come from other countries.

Rebekah Lodge Participates in District Meeting

Chelsea Rebekahs attended the district meeting of District No. 12, March 28, at Home City Lodge in Jackson. It was an afternoon and evening meeting. Mrs. Nina Lehmann, vice-grand, and Mrs. Eulah Lee Packard, pro-tem, represented the Chelsea chapter in lieu of the noble grand. Mrs. Velma Wolfe, Lina Reule, Carrie Dunlap and Dorothy Paszkiet also attended.

Their assignment was to explain "What is a Special Meeting, how and when it is held?" Mrs. Lehmann gave that report as well as acting as part of the courtesy committee.

At the regular lodge meeting on April 3, Mrs. Lehmann gave the report on the district meeting, and Loydell Keezer read the yearly Lodge report.

Mrs. Kathryn Sibestyen of Chelsea is the winner of the district drawing which means she will attend the camp at Big Star Lake, near Baldwin, this summer.

The second Tuesday of each month has been designated as a practice date for the degree team.

The lodge voted to donate all the proceeds from their recent rummage sale to the Building Expansion Fund for the IOOF and Rebekah Home on Michigan Ave. in Jackson.

The next regular meeting will be April 17, at 7:30 p.m. The next public card party will be April 28, at 8 p.m. The PNC Club will meet at the home of Mrs. Elsie Hinz on April 24, at 7:30 p.m.

St. Barnabas ECW Plans Spring Casserole Salad Luncheon

The regular business meeting of the E.C.W. was held Thursday, April 12, at the church.

Plans were completed for the annual spring casserole and salad luncheon to be held at the church on Wednesday, May 3, from 11 a.m. to 1 p.m. Posters were made to be distributed throughout town.

A slate of new officers was presented by the executive board and was unanimously accepted by members present. The new officers are: president, Dorothy Shipley; vice-president, Judi Birdsall; secretary, Mable Brown; treasurer, Jane Ranney.

Father Fitch announced May 12 as the tentative date for the ordination into the Holy Order of Deacons, of Jerrold Beaumont. The ordination will take place at St. Barnabas church.

Subscribe today to The Standard!

Remember Your Girl Friday NATIONAL SECRETARY'S WEEK APRIL 23-27

Punctuate your thank-yous with Flowers from

GAR-NETT'S FLOWER & GIFT SHOP

112 E. Middle St., Chelsea

Phone 475-1400

When you know it's for keeps



FAIR HAVEN WED. RING TRIPOLE WED. RING APOLLO WED. RING
Keepsake
REGISTERED DIAMOND RINGS

Love's perfect symbol is a Keepsake Diamond Ring... created in rich 14K gold and set with a perfect center engagement diamond. Choose yours today from our exciting new selection.

WINANS JEWELRY

Rings enlarged to show detail. Trade-Mark Reg.

What's Cooking In Michigan

By Larrestine Trimm
Michigan Dept. of Agriculture
Marketing Information Specialist
Home freezing is an excellent method of taking advantage of fruits, vegetables, meats, and poultry when they are plentiful. But the Food Inspection division, Michigan Department of Agriculture, advises you check your freezer to make sure it actually freezes.

Freezer temperature should be zero or lower to preserve foods for any length of time. Foods must be packaged in the proper materials. Freezing can maintain, but won't improve the quality of foods.

It's important to remember that the faster the food freezes, the better the quality remains, officials say. Don't place too many unfrozen packages in your freezer at one time, as they tend to raise the temperature within the freezer and slow down the freezing process.

Fresh meats, poultry and prepared foods generally require no special preparation for freezing other than proper packaging. Wrapping materials and containers must be moistureproof and vaporproof. Heavyweight aluminum foil, plastic films and heavily waxed freezer paper are examples.

Containers suitable for freezing include polyethylene bags, plastic cartons, glass freezer jars, aluminum foil and baking dishes of heatproof material.

Food Inspection officials recommend that before storing frozen foods, you label and date them, and check freezer storage charts for maximum periods of storage. Fresh beef can usually be stored eight to 12 months, fresh pork four to eight months and fresh poultry six months to one year.

You can capture the fresh flavor of Michigan fruits and vegetables by buying them at the peak of the growing season to freeze. Start with Michigan asparagus in early May and keep up with the season as it progresses through summer and early fall. You'll be glad you did, next winter.

Bulletins May Help With Meat Buying

Caught up in the meat price grind? Salvage your meat-buying budget with a few pointers from Michigan State University's Cooperative Extension Service.

In one brochure, you will learn how to buy a side of beef for the freezer. As much as 27 percent is lost from the carcass weight due to trimming.

Another zeros in on various port cuts, quality and amount needed per serving. Did you know there are four servings in one pound of canned ham?

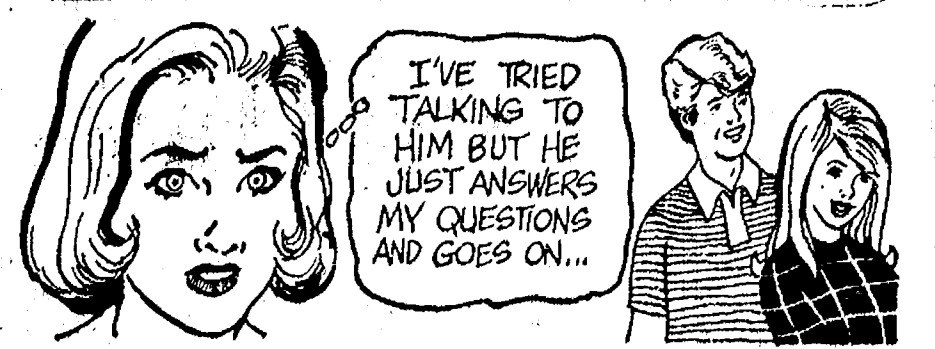
Alternatives to meat are suggested in the pamphlet on tuna and salmon. It helps you choose between flake or chunk pack styles to fit your needs.

Turning leftovers into treats is another problem, but with hints from specialists you can serve delicious dishes.

Obtain free copies of the following bulletins: CMI 66, "Buying Beef for the Freezer"; CMI 69, "Tuna and Salmon"; CMI 81, "Zeroing in on Pork"; E-658-J, "Turn Leftovers into Treats" at your county Extension office or write MSU Bulletin Office, Box 231, East Lansing 48823.

More than 356,000 G. I. home loans were guaranteed by VA in 1972, or about 30 percent more than in 1971. VA loan activity has been running at the highest level in 15 years.

For And About Teenagers



THIS WEEK'S LETTER: I am a 15 year-old girl and I like this certain 17 year old guy. In the past when I was with him he was always friendly. Since then he's just faded out. I have tried talking to him but he just answers my questions and goes on... I think the world of him. He'll talk to other girls, but why not me? He will watch me until I talk to another guy, but he'll just go get with another girl. What makes him have this strange behavior toward me? Please give me an idea on how I can get this certain guy.

OUR REPLY: A lot of psychology could go into this answer, but if you have a teenage problem you want to discuss or an observation to make, address your letter to FOR AND ABOUT TEENAGERS, COMMUNITY AND SUBURBAN PRESS SERVICE, FRANKFORT, KY. 40601.

VILLAGE BEAUTY SALON

LORETTA - SANDY - EULA
CHERYL - JANICE - CAROL
107 N. MAIN PHONE 475-1671

Beginning May 1, we will be closed Mondays during the summer.

OPEN TUESDAY THRU SATURDAY
Evenings By Appointment

SHOP for EASTER and SPRING The Selections Are Great and All New! MAIN FLOOR

The Bargain Floor Is Loaded With Goodies
1/3 - 1/2 and More Off
ON BARGAIN FLOOR

DANCER'S

Chelsea's Friendly Dept. Store



Our Finest Crop of

EASTER LILIES

\$3.00 and up

Also a Choice Selection of Other Spring Plants.

YELLOW CALLA LILIES - DAFFODILS
TULIPS - HYACINTHS - AZALEAS
CALCEOLARIAS - CINNARIAS - MUMS
GLOXENIAS - DISH GARDENS

FRESH CUT FLOWER ARRANGEMENTS

and CORSAGES IN EVERY COLOR

TO ACCENT YOUR EASTER OUTFIT

Free Delivery in Chelsea and Dexter Areas.

CHELSEA GREENHOUSE

Our 72nd Year in Business

MEMBER OF SELECTED F.T.D. & F.T.D.S.

7010 LINGANE RD., CHELSEA

PHONE 475-1353



EASTER GIFTING STARTS HERE!



VAN HEUSEN Vanknit

HALLMARK OF KNIT FASHION

Van Heusen designs the luxury status knit dress shirt for you in a smart nostalgic print. Vanknit features incomparable fit and wrinkle-free comfort in a supple blend of 65% Arnel* triacetate, 35% polyester. Machine washable and dryable.

SHORT OR LONG SLEEVES
\$9.50 up

STRIETER'S MEN'S WEAR

"The Place To Go for Brands You Know"

*Fiber Industries reg. t.m.

Community Calendar

Chelsea varsity baseball, home, April 19, against Novi; home, April 23, against Manchester; away, April 24, against Dundee; home, April 27, against South Lyon.

Chelsea varsity track, home, April 19, against Lincoln; home, April 23, against Dexter.

Friends of Library House Tour, Friday, April 27, 10 a.m. to 4 p.m. Luncheon 11 a.m. to 2 p.m. St. Andrew's church. Combination lunch and tour for Senior citizens, \$3, tour and lunch for others, \$4. Baby-sitting sponsored by Marthas of St. Joseph church, 50 cents per family. Take-out luncheons. For reservations call 426-4442. All proceeds go to Friends of Library for 1972 addition. adv45

Weight Watchers! After April 19, morning classes discontinued. Evening classes every Thursday, 7:30 p.m., St. Paul's church, Old US-12. adv18

OES Bake Sale, Masonic Temple, April 21, 9 a.m. adv14

Cleaning Bee at the Maple Grove Cemetery, April 21, 22.

Modern Mothers Child Study Club April 24, 8 p.m. at the home of Mrs. Vernon Otto. Speaker: Tom Hodgson. No guests please.

Modern Mothers Child Study Club Easter Egg Hunt for children of members will be Saturday, April 21, at 1 p.m. at Pierce Park.

Singles 25 and Up: Tuesday Night Singles Club is holding its Bunny Hop at the YM-YWCA in Ann Arbor on April 24. Fun, refreshments, and dancing to live music from 9 p.m. to midnight, by Archie Beyer and his Moonlighters.

Chelsea Woman's Club annual meeting, April 24, at 8 p.m. in McKune Memorial Library.

"King of Kings," sponsored by the First United Methodist church Junior High UMYF in the high school auditorium, 7 p.m.

Ray Spear, superintendent of the Northville Public Schools will speak on the "Year-Around School" April 26, at 7:30 p.m., in the high school library. You are encouraged to attend.

April Senior Citizen Birthday party postponed from April 19 to Thursday, April 26. No fun night this Friday, April 20, because of Holy Week.

Annual Easter Egg Hunt, April 21, Saturday, at 11 a.m. at the high school football field. Two prizes will be awarded for special eggs in each of four groups, preschooler, kindergarten, first and second grade. The event is sponsored by the Chelsea Jaycees.

Trashathon, sponsored by St. Paul United Church of Christ Junior High Youth Fellowship, April 28, 10 to 4 p.m.

April 11 Lima Center Study Group meeting that was cancelled is rescheduled for April 25, 10:30 a.m. at Lima Community Hall.

OES Rummage Sale, Masonic Temple, April 27, 9 a.m. to 8 p.m.; April 28, 9 a.m. to 12 noon. For pick up, phone 475-1141 or 475-1803. adv45

Modern Mothers Child Study Club Easter Egg Hunt, Saturday, April 21, at Pierce Park at 1 p.m. Club members and waiting 11st members only.

Rogers Corners Extension Study Group Tuesday, April 24, at the home of Mrs. John Koepele at 8 p.m.

VFW Auxiliary social meeting, Monday, April 23, at 8 p.m. in the Rebekah Hall. Guests are welcome.

Senior Citizens business meeting, Tuesday, April 24, at the Korner House, 7:30 p.m.

Still time to order Community Band Calendars and listings by contacting Mrs. Kermit Sharp: 475-8744 or by stopping at the F&M Restaurant. Deadline is May 10. adv44

PNG Club at the home of Mrs. Elsie Hinz on April 24, at 7:30 p.m.

Public card party, sponsored by the Rebekah Lodge, April 28, at 8 p.m., at the hall. adv43

RAM No. 140, "Special Night" postponed until further notice.

Sylvan Township Board meeting the first Tuesday of the month, at 7 p.m. at Sylvan Township Hall.

Washtenaw County March of Dimes Chapter's first annual Walkathon, Sunday, April 29. Register at 9 a.m. at Huron High school, Ann Arbor. Walk begins at 10 a.m. The 16-mile walk will be staged to collect money for the fight against birth defects.

Rod & Gun Club dance, Saturday, April 21. Open to public. Tickets \$6 per couple from Fred Klink, Tom Franklin or Roger Davis. adv43

Ann Arbor Saturday Night Singles Club dance for single adults 25 years and over, held at the YM-YWCA, 350 S. Fifth Ave., Ann Arbor, 9 p.m. to midnight, every Saturday. Live music, mixers and refreshments. For more information call 663-6068.

Inquiries regarding the Chelsea blood bank may be directed to Harold Jones in the event that Mrs. Dudley Holmes is unavailable, or to Mrs. Pauline McKenna, American Red Cross in Ann Arbor, 971-5300.

Saline Art Fair, May 6, from noon until 6 p.m., at the Community Center, Monroe St. If you are proud of your work and would

DEATHS

Mrs. Herbert Field Former Canadian Resident Dies at Methodist Home

Mrs. Herbert (Mary G.) Field of the Chelsea Methodist Home, died Sunday, April 15, at the age of 84. She was originally a resident of Canada where she was born, Nov. 24, 1888, in Kent City. Her parents were David and Jane Orin Flook.

She married Herbert Field Oct. 8, 1919. He died July 12, 1958. She came to the Home May 13, 1971 from Ann Arbor where one of her three daughters resides.

She is survived by one step-son, Douglas Field, of Detroit, and three daughters, Mrs. Ray (Elsie) Johnston of Ann Arbor, Mrs. Alice G. Knight of Tuscola, Ill., and Mrs. Doris McLearn of Romoland, Calif.

Services were held Tuesday, April 17, at the Chelsea United Methodist Home Chapel. The Rev. Richard L. Clemans officiated. Burial followed in Lakeside Cemetery, Howell. Arrangements were by Staffan Funeral Home.

Dewey Salyer Dies April 5 on His 50th Wedding Anniversary

Dewey Salyer died April 5, at the Chelsea Community Hospital, on his 50th wedding anniversary. He was 74.

His family had planned an open house at home for the following Sunday but when Mr. Salyer had to be hospitalized March 17 they changed their plans, arranging to have the gathering of family and friends at the hospital. Instead, he was buried on what would have been the festive day. The Rev. Charles E. Roark conducted the funeral service at 2 p.m. at the Staffan Funeral Home. Burial was in Oak Grove Cemetery.

Mr. Salyer, who lived at 16981 M-52, was born April 16, 1898, in Carver, Ky. His parents were Greenville and Phoebe Arnett Salyer. He married Ann Watson, April 5, 1923, in Carver. They came to Michigan in 1940.

He was employed at the Federal Screw Works until retiring in 1965.

He is survived by his widow, three daughters, Mrs. Thomas (Juanita) Caudill of Munith, Mrs. Jess (Bea) Fletcher of Chelsea, Mrs. Ott (Rose) Risner of Chelsea; one brother, Lee of Francisville; and three sisters, Mrs. Martha Howard of Aberdeen, O., Mrs. Henry (Daisy) Whittaker of Renesseleer, Ind., and Mrs. Harris (Betty) Arnett of Salyersville, Ky. Also surviving are five grandchildren and two great-grandchildren.

GETTING YOUR SHARE? Coffee is probably this country's most important import. The U.S. buys nearly half of the world's supply.

like to sell some of it, contact Alice Walters, 319 Pleasant Ridge, Saline, for an application blank. Forms must be returned by April 21. The fair will be out-of-doors unless it rains. Sponsored by Saline Jaycee Auxiliary.

American Legion and Auxiliary hospital equipment available by contacting Don O'Dell at 475-8249.

Senior Citizen Fun Nite every Friday evening at 7:30.

Lima Township Board meeting the first Monday of the month, 8 p.m. at the town hall.

Hot meal service brought to home of elderly or disabled. Available seven days a week to people living in the Village of Chelsea. For more information call 475-2923 or 475-8014.

Humane Society of Huron Valley has dogs and cats for adoption and to be reclaimed by their owners. Phone 662-5585, or go there from 9 a.m. to 5 p.m. daily, Sundays, 1 p.m. to 5 p.m. 3100 Cherry Hill Rd., 1/4 mile south of Plymouth Rd. at Dixboro.

Pap tests are free for all area women, Tuesday mornings, at St. Joseph Mercy Hospital, Ann Arbor. Call American Cancer Society office, 668-8857, for appointment.

The non-denominational "Light of the World" prayer and healing crusade, every Friday night, 7:30, at the Rebekah Hall on Main St. Everyone welcome.

HELLER ELECTRIC & INSULATING Now Edison Trained Electric Heat Dealer

Call us for estimates on all types of wiring.

We insulate old or new homes with Thermatron insulation and install electric heating systems.

CALL 475-7978



THE PRIDE OF YEARS: The farm at 20938 * grandson, now lives in the farm house which was Waterloo Rd., was purchased by Jacob Buehler in built, as near as she can figure, between 1870 and 1860 and it remains in the Buehler name. Mrs. 1890. Elden C. Buehler, the widow of the original buyers'

Buehler Home Designated Michigan Centennial Farm

Another area farm, this one owned by Mrs. Elden C. Buehler, has been designated as a Centennial Farm by the Division of Michigan History. The farm, which now lies idle, is located at 20938 Waterloo Rd.

School Board Briefs

Board of Education members, Storey, Schafer, Hopkins, Straub, Jaselschwardt, Koenn, and Superintendent Cameron, Business Manager Mills, Principal Conklin and Attorney Flintoff were present at Monday night's regular school board meeting.

President Storey, after opening the meeting, reported with trustee Schafer on their attendance at the National Association of School Boards convention.

A report on the snow week-end, March 17, was received. It stated that the donations received by stranded motorists far exceeded the cost of housing them. The balance of nearly \$260 was forwarded to the Red Cross. Approximately \$460 had been donated by the travelers to cover the cost of food and phone bills.

President Storey was elected as the official delegate to the Washtenaw Intermediate School District election on Monday, June 6. Extra curricular assignments, such as safety patrol and gymnastics, were approved for North Elementary school.

After tabling a report on the physical education program until May 7, the board went into an executive session at 10:15. This closed door session, which was re-

stricted to board members only, lasted until 12:20 a.m. at which time the regular meeting was called back to order.

The last order of business was the approval of the following motion: "That contracts be offered to all administrators for 1973-74 and that the board directs the superintendent to reassign the administrators as follows: Charles Lane to Beach school, Alan Conklin to Chelsea High school, Sylvester Wojcik to North Elementary school, and Robert Benedict to South Elementary school."

The meeting was adjourned at 12:35 a.m.

School Board ... (Continued from page one)

tors. They, like, the candidate, must be 18 years of age, a U. S. citizen and fulfill the residency requirements of six months in the state and 30 days in the school district.

Petitions, which are available at the office of the superintendent, must be filed with Howard Haselschwardt, secretary of the Board of Education on or before May 14 at 4 p.m.

Haselschwardt and William Storey are the two board members whose terms are expiring.

Band Boosters Seek Listings For Calendar

At the Thursday, April 12, meeting of the Band Boosters, Mrs. Kermit Sharp, Band Calendar chairman, announced that there is still time to order calendars and listings by contacting her by phone, 475-8744, or stopping at the F & M Restaurant. The deadline for these orders is May 10. Mrs. Sharp also noted that typists and more proofreaders are needed for compiling calendar material. If any reader is interested please contact her.

Mr. and Mrs. Mel Leach discussed Band Camp, and announced that applications and the money for Band Camp are due May 14-15. Student applications are being given out this week. A need for camp chaperones is still an issue, and any interested persons should contact the Leaches at 475-8123.

Warren Mayer then made several announcements. The State Festival is to be April 28, the Chelsea High Band Concert May 10, and the Beach School Concert May 31. The Band will be participating in Michigan Week and they will March Memorial Day.

Rainwear and summer band uniforms were discussed. Senior band members' dinner will be at the Campus Inn in Ann Arbor at some date after Easter.

The final Band Boosters meeting this year will be Thursday, May 17, at 8 p.m., in the high school band room. At this time there will be election of officers for the coming school year.

Cancer Society Will Benefit From Luncheon

Next Wednesday noon it will be easy to kill two birds with one stone. The hungry shopper, businessman or senior citizen can eat a nourishing lunch at the First Congregational church while contributing to the American Cancer Society.

The event is known by the catchy title, "The Vegetable Beef Soup Luncheon," and it will be as wholesome as it sounds. Homemade soup, sandwiches and chips will be served from 11 a.m. until 1 p.m. at the reasonable cost of \$1.25. All the proceeds will go to the American Cancer Society.

Ruth Leach and Gloria Greenleaf have planned the luncheon as the community effort during April's cancer drive.

They will be helped Wednesday, April 25, by many other volunteers who will lend a hand serving what they hope to be a large crowd. Tickets will be available at the door.



JERRY EVILSIZER assumed the duties of Shift Foreman at Dana Corp. on Monday, April 16. He will take responsibility for Third Shift. Jerry, his wife Barbara, and two children, Tracey and Tim, reside in Chelsea. Prior to joining Dana, Jerry worked for the Ford Motor Co. The six years of machining experience at Dana will be an asset in his new endeavor.

Walk-A-Thon Will Benefit Dimes Fund

If the Spring weather has got you wanting to get out into the fresh air, the Washtenaw county March of Dimes chairman has a suggestion. Take part in their first annual Walk-A-Thon on April 29.

Even if you are not much of a hiker, there are ways you can support this money raising event. By merely "talking it up," you can encourage others to participate. Or you may sponsor walkers.

Each person walking the 16-mile course around Ann Arbor, will be participating on the behalf of his sponsors who have pledged to pay a certain amount of money per mile. Sponsors may be parents, friends, neighbors, relatives, small businessmen or anyone who will help aid in the fight against birth defects.

The sponsor's pledges, a any amount from 10 cents a mile, are paid after the walker completes the Walk-A-Thon and shows his stamped route card as proof of his accomplishment.

Prizes will be given to some of the walkers two weeks after the event, after sponsor pledges have been collected and returned.

Mrs. Charles Bongo, Chelsea's March of Dimes chairman, at 475-7315, and Mrs. Katie Lewis at 761-6331 may be contacted for additional information. Sponsor sheets are available at F&M Restaurant in Chelsea.

McCULLOCH Your Choice From \$99.95

MINI MAC 1
The new mini mac model at an unbelievable new price. 6.9" pounds of power. Fun, easy to use. An outstanding value with 10" bar and chain. **\$99.95**

MINI MAC ELECTRIC
The world's lightest electric chain saw. Just 7.8 pounds. Geared down for power. No fuel to mix. Starts at the flick of a switch. With factory installed 10" bar and chain. **\$99.95**

MINI MAC 6
The world's most popular chain saw model. Cuts a 6" log in 5 seconds. Handles like an electric. Great for camping, pruning, fire making patio furniture. With factory installed 12" bar and chain. **\$114.95**

MINI MAC 6 AUTOMATIC
Automatically oils its own bar and chain as you cut, cuts for itself. Big 14" bar and chain cuts logs over 2' thick. Factory installed bar and chain. **\$129.95**

POWER MAC 6 AUTOMATIC
The tree surgeon's choice. Only professional chain saw in 6 pound class. Automatic oiling. 14" factory installed bar and chain. **\$159.95**

MAC 10-10 AUTOMATIC
Favorite of the farmer/professional to handle the big jobs. Powerful 3.3 cu. in. engine. Weighs just 12 1/2 lbs. Automatic bar and chain oiling. 16" factory installed bar and chain. **\$184.95**
*less cutting attachments

McCULLOCH

CHELSEA HARDWARE

110 S. Main St. Phone 475-1121

For best performance always use McCulloch power matched chains, bars and sprockets

LAKERS



ALUMINUM

Dock Supports

ARE IN STOCK

- AT -

CHELSEA LUMBER

TOTAL SUPPORT-ASSEMBLY PRICE
FOR A NORMAL 3-SECTION 42-FT DOCK

\$87⁷⁵

(Includes 1-36" & 2-48" Assemblies)

THE FIRST COST IS THE LAST!

GO

GAMBLES

LAWN & GARDEN
CENTER

Low gravity profile

Swinging depth stake

1-Speed Horizontal Engine
5-HP ROTARY GARDEN TILLER

\$177

Power, quality, performance and easy handling at value price. Easy recoil start, fingertip controls, gripper tires.

Heavy duty transmission

Reg. \$4.99 Furrower Included

2-Speed Horizontal Engine
5-HP ROTARY GARDEN TILLER

\$199

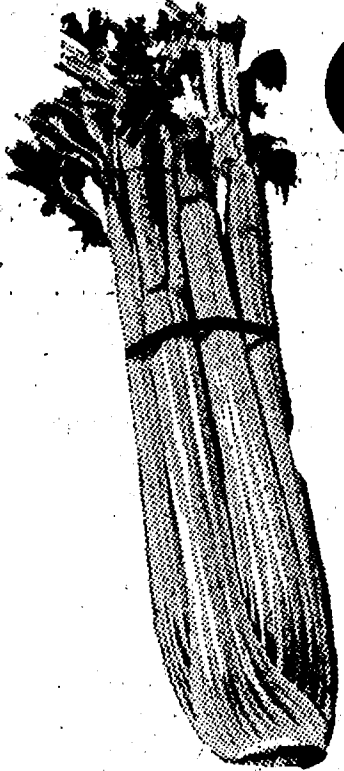
Works a 26" swath to 8" deep. Speed adjusts to the type of soil being worked. Major point shock support, super grip 10" tires.

Wide unbreakable slasher tines

COMPLETE LINE LAWN & GARDEN NEEDS


1101 M-52 CHELSEA
**OPEN DAILY 7 a.m. to MIDNITE
OPEN SUNDAYS 7 a.m. to 7 p.m.**

CRISP CALIFORNIA


CELERY . Large Stalk **25¢**

 CALIFORNIA STRAWBERRIES Qt. **79¢**

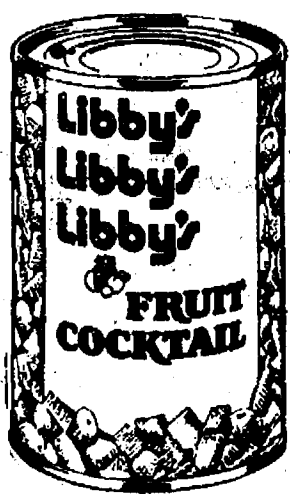
 FRESH PINEAPPLE Each **79¢**

 FRESH ASPARAGUS Lb. **49¢**

 CALIFORNIA VALENCIA ORANGES Doz. **69¢**

 FRESH YAMS Lb. **25¢**
Complete Selection Easter Plants

 LOVELY TRADITIONAL
EASTER LILIES

 3 BLOOM **\$2.19**
6 BLOOM **\$3.19**

 LIBBY'S FRUIT COCKTAIL 16-Oz. **29¢**

 BROWN SUGAR 2 1/2-Lb. Bag **49¢**

 POWDER SUGAR 2 1/2-Lb. Bag **49¢**

 DOLE PINEAPPLE 3 20-Oz. Cans **\$1**

 KRAFT
MIRACLE WHIP Quart
Save 10c

49¢

 13c OFF LABEL
LIQUID JOY 22-Oz. **39¢**

 CHICKEN OF SEA LIGHT
CHUNK TUNA 6.5 Oz. **39¢**

 KIWI SHOE WHITE **29¢**

SAVE 10c

 RICHELIEU Cream or Whole Kernel
CORN 16-Oz. Can **19¢**

SEALTEST 1% LOW FAT

MILK Gallon **88¢**

SAVE 11c

 KRAFT HALF MOON LONGHORN
CHEESE lb. **99¢**

 8-OZ. KRAFT PHILADELPHIA
CREAM CHEESE **29¢**

 18-OZ. WIN SHULER'S
CROCK CHEEZ **\$2.79**

 REDDI WHIP
TOPPING **59¢**

 1-LB. FLAVORITE
MARGARINE **19¢**

 8-OZ. PILLSBURY
CRESCENT ROLLS **37¢**

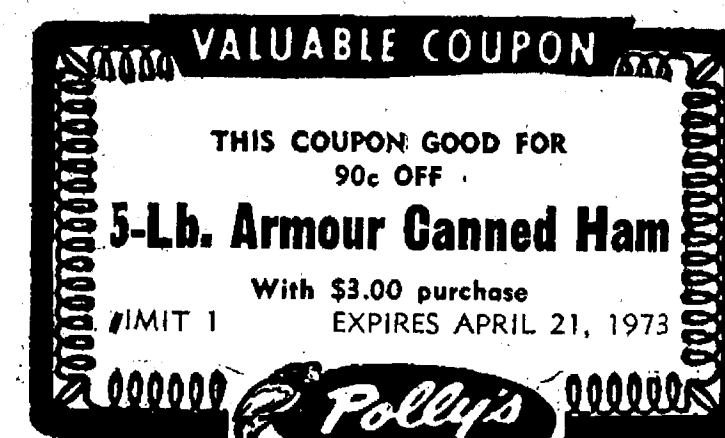
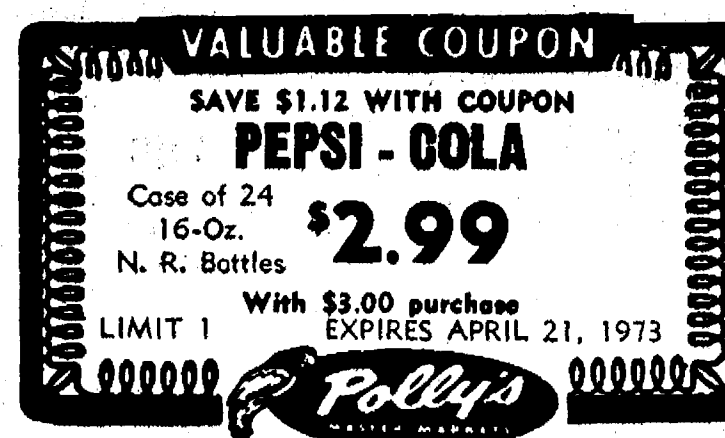
HOLSUM TWIN

BROWN 'N SERVE ROLLS 2 Pkgs. **69¢**

 BONNIE
ANGEL FOOD CAKE 13-Oz. **59¢**

 REGULAR OR 1 CAL
VERNORS GINGER ALE 28-Oz. Bottle **29¢**

SAVE 6c



FARMER PEET'S REGULAR SMOKED

HAM Shank Portion Lb. **69¢**

BUTT PORTION . . . lb. 89¢ CENTER SLICES . . . lb. \$1.09

FARMER PEET'S BONANZA

 BONELESS HAMS Whole or Half Lb. **\$1.29**

HYGRADE WEST VIRGINIA

 DELUXE HAMS Lb. **\$1.29**

U.S.D.A. CHOICE

 STANDING RIB ROAST 4 to 7 Rib Lb. **\$1.29**

ARMOUR STAR SELF-BASTING YOUNG

 HEN TURKEYS 8-16 Lbs. Lb. **65¢**

 LEG O' LAMB ROAST Lb. **\$1.29**

 QUALITY PLUS
CANNED HAM 5-Lb. Can **\$5.39**

 1-LB. FRESH OCEAN
PERCH FILLETS **99¢**

 12-Oz. Pkg. Bob Evans Skinless Link
SAUSAGE **98¢**

 ALPINE BAKE HAUS
APPLE PIES **59¢**

 DESSERT TOPPING
PET WHIP 10-Oz. **33¢**

 PET RITZ FROZEN
PIE SHELLS 2-Ct. Pkg. **29¢**

 5-LB. BAG ELF FROZEN
FRENCH FRIES **88¢**

 44-OZ. L. J. HARRIS DUTCH
APPLE PIE **88¢**

 16-OZ. FLAVORITE HALVES
Strawberries **59¢**

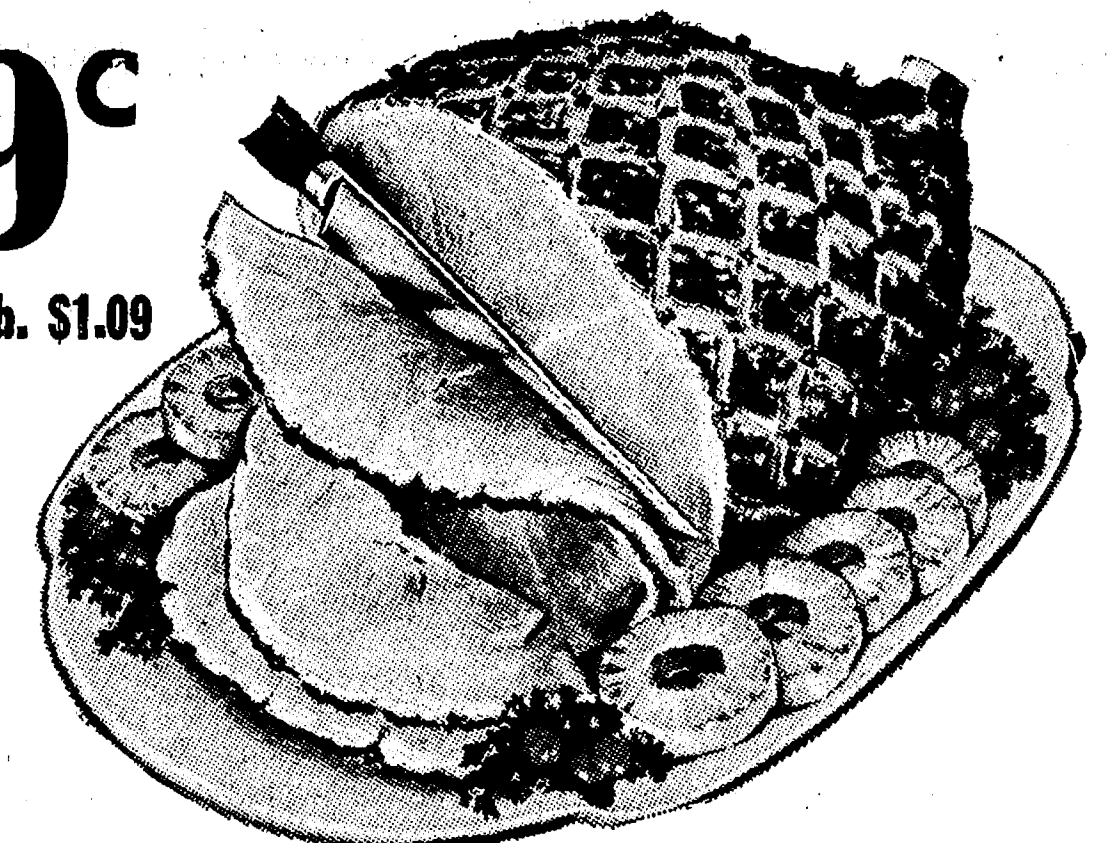
 Flavorite Frozen Broccoli
SPEARS **4**

 FLAVORITE FROZEN
CAULIFLOWER **4**

 8-Oz. Pkgs. **\$1**

 8-Oz. Pkgs. **\$1**

 8-Oz. Pkgs. **\$1**

 8-Oz. Pkgs. **\$1**

 ALL WHITE OR ALL DARK MEAT
QUARTERED FRYERS lb. **59¢**

 QUARTERED PORK LOIN SLICED INTO
PORK CHOPS lb. **\$1.09**

 FARMER PEET REPEATER
SLICED BACON lb. **99¢**

 FARMER PEET'S A.C.
BRAUNSCHWEIGER lb. **79¢**

 FARMER PEET'S EASTER
BOCKWURST lb. **\$1.39**

 2-LB. PKG. SWIFT ALL WHITE
TURKEY ROAST **\$3.49**

 1-LB. LOAF ALPINE BAKE HAUS WHOLE
WHEAT BREAD **39¢**

 OPEN PIT
BARBECUE SAUCE 28-Oz. **39¢**

 HENRI'S
DRESSINGS 8-Oz. **29¢**

 HEFTY TRASH
CAN LINERS 10-Ct. **99¢**

 EDON
TOILET TISSUE 4 Pack **29¢**

 7-Oz. Tube
SHAMPOO **\$1.39**



BOWLING NEWS



150; J. Norris, 190; R. Lutovsky, 154; A. Sindlinger, 150; P. Fitzsimmons, 165; R. Hummel, 156, 158; A. Eisele, 156; A. Knickerbocker, 160; L. Bradbury, 159; H. Morgan, 171; M. Sutter, 154, 160; A. Alexander, 171; D. Alber, 159; M. Kozminski, 154; M. Eder, 172; A. Boham, 176; N. Kennedy, 159; B. Fike, 168.

The Chelsea Standard, Thursday, April 19, 1973 11

Guys & Gals Mixed League

Standings as of April 12

	W	L
Elliott's Milk Hauling	30	44
W.O.W.	77½	46½
Halfmoons	77	47
Halfmoon Lakes	74	50
Village Motor Sales	69	55
Team No. 90	60	64
Team No. 10	58½	65½
Grass Lake	56	68
Team No. 11	54	70
Downers	50½	73½
The Joneses	46½	77½
Team No. 9	41	83
Team, high game: Halfmoon Lakers and The Downers, 853.		
Team, high series: Halfmoon Lakers, 2,407.		
Women, high game: M. L. Westcott, 215.		
Women, high series: M. L. Westcott, 510.		
Women, 150 and over games: M. L. Westcott, 215, 156; P. Elliott, 176, 156, 163; A. Cole, 155; V. Schmidt, 152; D. Feliks, 168; J. Delf, 156, 182; P. Taylor, 156.		
Women, 450 and over series: M. L. Westcott, 510; P. Elliott, 495; J. Schmude, 487; J. Delf, 470.		
Men, high game: L. McKinnon, 211.		
Men, high series: G. Beeman, 542.		

Chelsea Lanes Mixed

Standings as of April 13

The Pub	139	85
Doug's Painting	130½	93½
Meabon's	126	98
Bushwackers	123	101
Ann Arbor Centerless	120	104
One Hour Martinizing	116	108
Jars & Bars	115	108
Jiffy Market	115½	108½
Hopefuls	114	110
The Pollocks	112½	111½
Marsh & Lewis	110	114
Vervey 1 Henderson	108	116
Chelsea Lanes	105	119
Four Roses	104	120
The Gasers	103	121
Bollinger's Sanitation	94	130
Chelsea Standard	91½	132½
Gaddis & Dettling	91	133
Team, high series: Bushwackers, 2,471.			

Subscribe today to The Standard!

Junior Swingers

Standings as of April 14

	W	L
Return of the Bully Bros.	90 1/2	29 1/2
Hot Shots	82 1/2	37 1/2
The Rods	79	41
"74" Strikers	64	56
The Fancy Five	60	60
Spectacles	57 1/2	62 1/2
Revolutions	49	71
YBA Scorers	45 1/2	74 1/2
Team No. 8	43	77
The BBA's	25	95
Girls, games over 120: C. Collins, 156; D. Craft, 124, 123; D. Packard, 129; K. Milliken, 128; S. Schulze, 140; B. Lovely, 139; M. Fahrner, 146, 124, 137; K. Tobin, 123; B. McGuire, 162, 131; T. Abdon, 168; L. Hafner, 128, 122; D. Alexander, 120, 149; K. Fairbanks, 121.		

Tri-City Mixed League

Standings as of April 13

	W	L
E. P. Smith Pallet Co.	72	52
Chelsea Cleaners	71½	52½
McNutt & Lyerla	71	53
Jiffy Market	71	53
3-D Sales & Service	68	56
Four Mobil	67½	56½
Village Inn	68	58
Jerry & Doug's Ashland ..	68	58
Sprague Buick & Olds	65½	58½
Craft Appliance Co.	65	59
Harry Koch & Associates ..	65	65
The Lively Ones	66	68
Portage Hardware	54½	69½
Stivers	49½	75½

Leisure Time League

Standings as of April 12

	W	L
Unpredictables	78½	45½
Three Stooges	71½	52½
Misfits	71	53
Rug Rats	68½	55½
Slowpokes	65	59
Mishaps	65	59
Elm Leaves	61	63
Bumps & Grinds	57½	66½
Ding-a-Lings	45	79
Moppets	37	87
140 games: C. Short, 161; M. Miller, 170, 179; L. Haller, 143; M. O'Donnell, 146, 146; B. Robinson, 146; D. Dault, 152, 161; G. Wheaton, 151, 163, 140; S. Cavadas, 151; K. Haywood, 164; M. Usher, 190; D. Hafner, 147, 158.		
400 series: C. Short, 406; M. Miller, 457; L. Haller, 401; M. O'Donnell, 407; D. Dault, 445; G. Wheaton, 454; K. Haywood, 402; M. Usher, 444; D. Hafner, 434.		

Chelsea Suburban

Standings as of April 11

	W	L
Fletcher's Foor Mobil	78	50
Chelsea Drug	74	54
State Farm	71½	56½
Chelsea State Bank	70	58
Dancer's	68	60
Dairy Queen Braizer	67½	60½
Chelsea Lanes	67	61
Waterloo Garage	62	66
Dana Corp.	60½	67½
Pittsfield Plastics	60	68
Artex Roll-Ons	49½	79½
Frisinger Realty	41	87
150 games and over: S. Steele, 154, 152, 182; J. Stoll, 157; P. Harook, 184, 189; M. Paul, 155, 190; K. Chapman, 165; G. DeSmith, 160; B. Fike, 154; R. McGibney, 158, 185; N. Packard, 166, 171, 186; P. Huston, 150; D. Keezer, 162, 156; J. Buku, 167, 210; D. Keezer, 167; D. DeLaTorre, 163, 164; H. Harrison, 185; J. Schulze, 150; N. Prater, 151; D. Cozzens, 159, 166; C. Stoffer, 169; N. Keezer, 152; S. Bowen, 178; E. Yocum, 157; A. Wood, 150; A. Hocking, 158; P. Walz, 162; P. Elliott, 162, 187; S. Moore, 158, 166; N. Collins, 224, 192; E. Figg, 154; M. Breza, 154; K. Snyder, 152.		

Junior House League

Standings as of April 12

	W	L
Chelsea Lanes	144	73
A. A. Building Supply	130	87
Wolverine No. 2	129	88
Inverness Inn	123	94
Washtenaw Engineering	114	96
Wolverine No. 1	117	100
3-D Sales & Service	114	103
Boyer Automotive	112	105
Gambles	112	105
Smith's AAA Service	107	110
Michigan Bell	101	116
N. American Rockwell ..	99	118
Jiffy Mix	87	130
Cavanaugh Lake Store ..	83	134
Dana No. 3	79	131
Frisinger Realty	81	136
210 games: J. Risner, 210; F. Northrup, 216; B. Beeman, 214, 231; C. Figg, 211; L. Bauer, 234; K. Norris, 213; L. Hughes, 216; A. Clemes, 217; J. Myning, 221; J. Ledwidge, 225.		
600 series: B. Beeman, 649; L. Hughes, 612.		
525 series: T. Marsh, 526; C. Figg, 526; L. Bauer, 592; W. Kruse, 530; J. Harok, 531; J. Collins, 538; D. Wutke, 528; P. Boham, 540; K. Norris, 578; E. Marshall, 527; D. Buku, 537; J. Toma, 565; A. Clemes, 530; J. Ledwidge, 566; J. Myning, 559; D. Eder, 542; J. Risner, 533; E. Greenleaf, 529; F. Northrup, 592; T. Dittmar, 548; G. Beeman, 534.		

Charlie Brown and Snoopy's Friends

Peanut League

Standings as of April 14

Standings as of April 14		
	W	L
Pin Crackers	80	10
Super Strikers	45	45
Five Stooges	44	46
Flintstones	40	50
Chelsea Bulldogs	38	52
Snoopy & Red Baron	22	68
Games over 70: T. Guenther, 75, 88; R. Krichbaum, 73, 70; T. Greenleaf, 103, 94; M. Steinaway, 90, 93; J. Krichbaum, 92; D. Thompson, 117, 90; T. Schulze, 86, 76; E. Bristle, 73; R. Schulze, 74, 80; L. Durgan, 71, 77; T. Miller, 79, 77; J. Rowe, 88; M. Umstead, 76; M. A. Petsch, 85, 92; A. Fletcher, 88, 80; R. Klink, 70, 87; D. Darrow, 71; J. Seyfried, 81; M. Ward, 72, 71; J. Verwey, 78, 98; D. Marsh, 74, 80; M. Alexander, 131, 123; C. Fahrner, 72; D. Alber, 100, 147; J. Stock, 139, 129; P. Hoffman, 100, 100; B. Freeman, 96, 122; G. Egeler, 74, 136.		

Hi Point Mixed

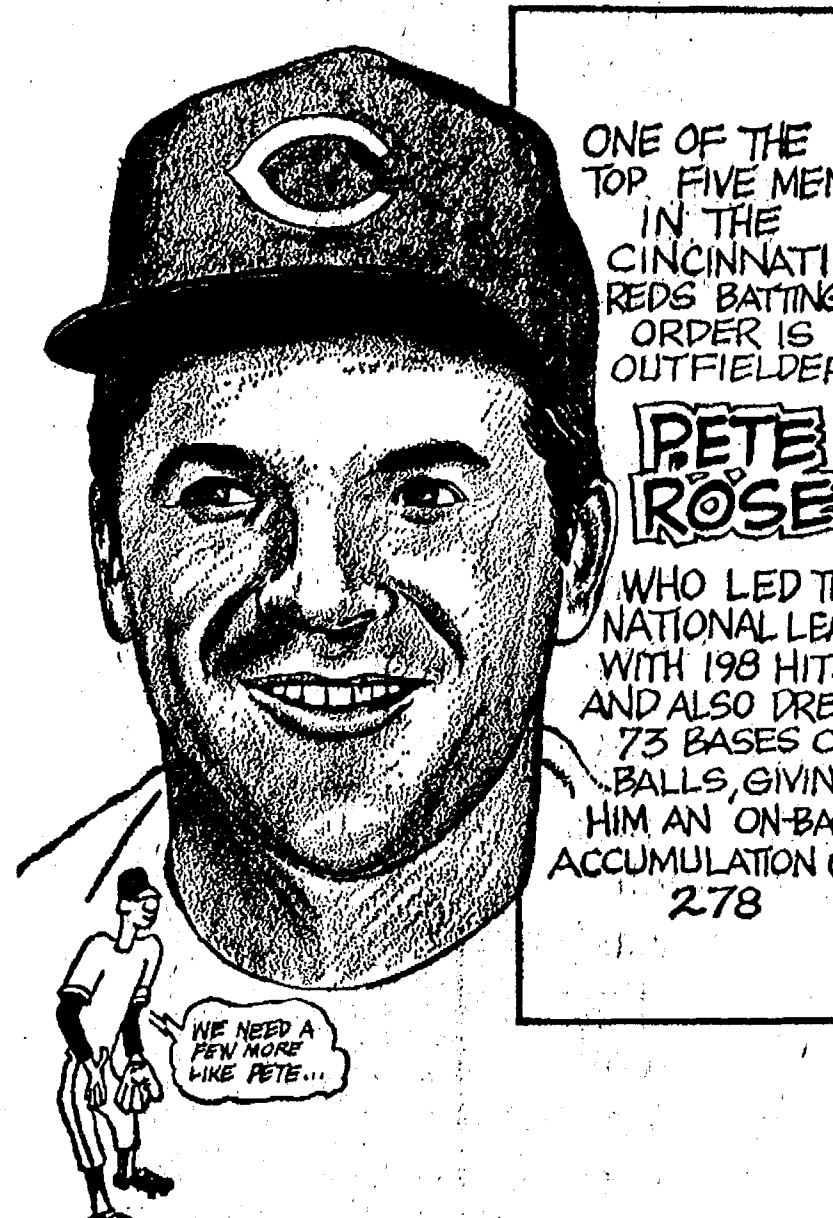
Standings as of April 10

Baun, 159; D. Thompson, 207; T. Schulze, 162; E. Bristol, 120; R. Schulze, 154; S. Lelsing, 123; L. Durgan, 148; T. Miller, 158; J. Rowe, 157; M. Umstead, 136; M. A. Petsch, 177; J. Hoffman, 128; A. Fletcher, 168; R. Klink, 167; D. Darrow, 100; J. Seyfried, 150; M. Ward, 143; J. Verwey, 178; D. Marsh, 154; D. Dettling, 130; M. Alexander, 254; C. Fahnner, 134; D. Alber, 247; J. Stock, 268; P. Hoffman, 200; B. Freeman, 218; G. Egeler, 210.	
---	--

Hi Point Mixed

Standings as of April 10

ZAP	W
Guess Who	688
Weber Construction	679
Fiat Tires	664
River Rats	678
Alley Katz	561
Moving Violations	560
Ding Bats	553
Ding A Lings	546
Holy Terrors	542
Cheetah Weetah's	518
Hi Steppers	477
Men, series over 450: O. Inbody, 540; M. Purdy, 500; V. Jeffers, 484; F. Steers, 503; D. Carpenter, 482; K. Koch, 488; H. Templeman, 482.	
Men, games over 160: O. Inbody, 168, 194, 177; M. Purdy, 158, 200; V. Jeffers, 180; F. Steers, 184, 168; D. Carpenter, 160, 175; H. Davis,	



ONE OF THE TOP FIVE MEN IN THE CINCINNATI REDS BATTING ORDER IS OUTFIELDER PETE ROSE WHO LED THE NATIONAL LEAGUE WITH 198 HITS AND ALSO DREW 73 BASES ON BALLS, GIVING HIM AN ON-BASE ACCUMULATION OF 278

Rolling Pin League

Standings as of April 17

	W	L
Spooners	77 1/2	46 1/2
Moppper Uppers	77 1/2	46 1/2
Grinders	68 1/2	55 1/2
Mixers	66	58
Egg Beaters	65 1/2	58 1/2
Dish Rags	65	59
Pots	64	60
Coffee Cups	57	67
Brooms	55	69
Kookie Kutters	54	70
Jolly Mops	47 1/2	76 1/2
Kitchen Kapers	46 1/2	77 1/2
140 and over games: C. Shepherd, 187, 176, 146; H. Ringer, 147; G. Greenleaf, 140; M. Usher, 147, 191, 168; S. Parker, 140; D. Dirham, 146, 155; K. Del Prete, 148; J. Johnson, 148; L. Orlovski, 166, 146; J. Rabbitt, 140, 143; E. Reynolds, 147; E. Williams, 154, 156; D. Anderson, 145, 155; B. Wilber, 146; V. McNutt, 168; W. Waldeck, 146, 144; G. Weiner, 142; J. Lewis, 152, 153; G. Klink, 143; D. Keezer, 163; H. Dvorak, 148; I. Nixon, 145; P. Harook, 162, 146, 160; D. Machnik, 140.		
425 and over series: C. Shepherd, 489; M. Usher, 506; L. Orlovski, 438; E. Williams, 438; J. Lewis, 438; P. Harook, 468.		

Senior House League

Standings as of April 16

Standings as of April 16		
	W	L
Nam Quad Enterprises	86 1/2	41 1/2
Seltz's Tavern	80 1/2	47 1/2
Lloyd Bridges Chevrolet	75	50
Jim's Taxidermy	75 1/2	52 1/2
Chelsea Grinding	71	57
Robards Trucking	67 1/2	60 1/2
Sylvan Center	67	61
Massey Ferguson	66 1/2	61 1/2
Schneider's Market	65	63
Mark IV Lounge	64	64
Chelsea Cleaners	59 1/2	68 1/2
Wolverine Race Club	58	70
Murphy's Barber Shop	57	71
Polly's Market	56	72
Ben's Arco Service	53	75
Schneider's Builders	52	76
Bestline	50	78
Holsworth	45	83
525 series: D. Murphy, 528; G. Beeman, 570; D. Coppennoll, 559; W. Hartman, 534; D. Allen, 532; E. Keezer, 542; J. Abdon, 550; M. Kern, 568; A. Sannes, 532.		
200 games: W. Kruse, 202; G. Beeman, 221; D. Murphy, 203; D.		

200 games: D. Buku, 218; B. McGibney, 235; J. Waldyke, 209; B. Smith, 209.

Nite Owl League

Standings as of April 16

	W
ault & LeVan Builders	79
eele's Heating & Cool.	78 1/2
avanaugh Lake Store	73 1/2
ahl's Oil Co.	70 1/2
ark IV	70
ed's Standard	67
McCalla Mobile Feeds	66 1/2
Jack & Son Barbers	64
oster's Men's Wear	63
Smith's Service	63
Chelsea Finance	61 1/2
Heller Electric	61
Ann Arbor Kirby Co.	60 1/2
Pump & Pantry	60
A. M. Corp.	58
Team No. 14	53
Slocum's Construction	53
Spoilers	50
500 series: T. Steele, 507; Buku, 541; B. McGibney, 536; Parks, 535; A. Kuhl, 508; L. McKinnon, 500; J. Waldyke, 574; G. Riethmiller, 521; T. Dault, 526; D. Bingle, 516; B. Smith, 527; J. Herick, 538; J. Allen, 507; J. C. K.	

St. Louis School Notes

Thursday night, April 12, was Scout meeting night again, and as usual, the boys were waiting and ready.

The three den mothers instructed the boys in making a large Easter basket which was presented to the priests after the meeting. Bob Burgess, assistant cubmaster, passed out membership cards to the boys, who had not yet received them.

Bob explained what a charter is and what it means to be a scout unit. The St. Louis Scout pack charter will be presented at the next meeting.

Treats were supplied and served by the den mothers, Otis Tibus, David Bowbeer, and Charles Burgess assisted. Bob in the closing ceremony known to scouts as "the Scoutmaster's Sign of Reverence."

The boys at school were visited, April 10, by Bob Kantzler, the brother of a St. Louis student and a student at the University of Michigan. Bob brought several members of a kate group to give the boys a demonstration.

Another demonstration the boys witnessed this week was put on by Jeff Dembs and several students from his dance studio in Detroit.

David Balough was a birthday boy, April 10.

The second annual Alumni Day was held at the school on Palm Sunday. The day's activities were begun with Mass celebrated by Father Germano. The boys and the guests sat down to dinner about 12:15. A get-together followed until 2 p.m. when a talent show was put on using talent of both the students and the alumni.

Later, the Roosters challenged the alumni to a basketball game

and won. After a snack at 4:30, the guests said their good byes until next year.

Much of the food and the work that went into the preparations for the dinner was donated by parents who also helped set up and decorate tables. Judy Fryback was in charge of invitations and the planning for the Alumni Day.

The Easter season arrived at the school this week in the form of decorated eggs and Easter candy contributed by senior citizens at Chelsea Community Hospital. Jack Merkel has also been thoughtful enough to donate carpet remnants to help beautify the school. Mrs. Paul Koch's gift of cookies and cakes were also appreciated.

The boys leave for their Easter vacation today, Thursday, and will return April 29. They had their special dinner of fried chicken and the trimmings yesterday.

The VA has doubled its daily payments to state homes for hospital care of eligible veterans and expanded its grants to remodel existing state facilities.

ROBBER AT 13

Buffalo, N.Y.—Police reported arresting a 13-year-old boy who robbed the Marine Midland Bank Western by walking into the bank, pointing a gun at a teller and saying, "Fill the bag." The teller stated he wanted \$20's, not one dollar bills.

A U. S. Supreme Court justice usually serves as a judge in the annual Campbell Moot Court Competition of the University of Michigan Law School.



F. CURTIS BELSER (third from left), son of Mr. and Mrs. Frederick Belser of Chelsea, is shown here with four other University of Michigan aerospace engineering students examining the model

of OMAR. They have designed the satellite to measure the distribution of ozone in the upper atmosphere.

U-M Aerospace Students Design Satellite To Measure Ozone in Upper Atmosphere

F. Curtis Belser of Chelsea has worked with 12 other aerospace engineering students at the University of Michigan in designing a satellite capable of measuring the global distribution of ozone in the upper atmosphere. Curtis worked with another student to perfect the communication system for the satellite.

The student engineers believe their project, named OMAR (Ozone Monitoring And Research), is especially timely.

"By absorbing much of the harmful ultraviolet radiation emitted by the sun, the ozone layer protects man as well as other life forms on earth," explains project manager Jim Longuski. He

adds that chemists have recently suggested that oxides introduced into this region of the upper atmosphere by the proposed Supersonic Transport aircraft will result in ozone depletion.

Such man-made modifications of the ozone layer, Longuski notes, could have disastrous consequences.

"Despite its obvious importance, very little is known about the makeup of the ozone layer above 18 miles," he notes. "Thus many of the current debates concerning it must remain largely conjectural until this information gap is filled—and that's what OMAR is designed to do."

Using a technique known as "horizon inversion," OMAR is capable of measuring the profile of global ozone distribution with an accuracy of one kilometer. The Michigan students estimate that the satellite will be able to map the globe in six days.

"OMAR's sensor package consists of a four-inch Cassegrainian telescope, a filter wheel, and a photomultiplier tube," Longuski says. The data gathered by this equipment will be tape recorded and transmitted to earth via a VHF transmitter.

The aerospace engineering class displayed a full-scale model of their satellite on Monday, April 16, at 1 p.m., in the Chrysler Center for Continuing Engineering Education on U-M's North Campus.

In addition, the students released a comprehensive technical report on OMAR Wednesday, April 18, during a formal presentation to officials from industry and government.

The Michigan Youth Symphony begins its 25th year in 1973. Sponsored by the University of Michigan's Extension Service and School of Music, the Symphony brings together hundreds of Michigan high school musicians each

LOSE UGLY FAT OR PAY NOTHING

Start losing weight today OR MONEY BACK. MONADEX is a tiny tablet that will help curb your desire for excess food. Eat less—weigh less. Contains no dangerous drugs and will not make you nervous. No strenuous exercise. Change your life... start today. MONADEX costs \$3.00 for a 20 day supply and \$5.00 for twice the amount. Lose ugly fat or your money will be refunded with no questions asked by:

CHELSEA DRUG STORE
Chelsea - Mail Orders filled

District Court Proceedings

Week of April 10-16

In 14th District Court, during the week of April 10-16, Robert Huffman was fined \$100 for failing to stop at a personal injury accident.

Larry Paul Laughlin was found guilty of impaired driving. He will be sentenced at 9 a.m., May 23.

Robert April pled guilty to going 70 mph in a 40 mph zone. He was fined \$41.

Frank Von Broda, Jr., pled guilty to fleeing police and to driving recklessly. He was fined \$75 and given a year's probation for both charges.

Margaret Reese was fined a total of \$90 for littering and consuming alcohol in a public place.

Grady L. Frederick, pled guilty to going 75 mph in a 55 mph zone. He was fined \$31.

John Harvey was sentenced to spend 20 days in jail or pay a fine of \$150 for use of marijuana.

Michael Reilly was found guilty of careless driving and fined \$45.

Willis Watts pled guilty to going 50 mph in a 25 mph zone. He was fined \$41 and costs.

April Helfrich pled guilty to consuming alcohol on a public highway. She was fined \$60.

Leon Bentley pled guilty to driving without an operator's license. He was sentenced to a fine of \$100 plus three days in jail, or 30 days in jail spent on weekends beginning April 13.

Larry Losey pled guilty to creating excessive noise and was fined \$16.

Samuel Bouillion pled guilty to driving a motorcycle without a helmet and without a cycle license. He was fined \$28 on each charge.

Richard page was fined \$50 for possession of marijuana. He was placed on one year's probation.

Benjamin Cologie was found guilty of going 45 mph in a 25 mph zone. He was fined \$26.

Michael St. Charles pled guilty to going 50 mph in a 25 mph speed zone. He was fined \$41.

Andrew Pearson was fined \$175 for his second offense of driving with a suspended license. He was sentenced to a year's probation and he must spend the first five days of it in jail.

Richard Robertson pled guilty to driving without an operator's license. He was fined \$50 and costs.

Thomas Mitchell was fined \$200 and directed to attend alcohol education series for driving under the influence of liquor.

Jack Glenn was fined \$50 for drunk and disorderly conduct.

James Salver was fined \$30 for failing to report an accident.

Wayne Stanley was found guilty of impaired driving. He will be sentenced April 30.

Roderick Janich pled guilty to failing to yield the right of way. He was fined \$21.

Francis Carstons pled guilty to failing to yield the right of way. He was fined \$21.

Roger Eugene Reed pled guilty to driving with a suspended license and to having no registration in the car. He was directed to pay \$26 or spend five days in jail for the second charge. He was sentenced to a fine of \$79 plus three days in jail or 20 days in jail on the first.

Under recent legislation, men whose wives die or become 100 percent disabled as a result of military service now share equal rights with wives and widows of male veterans under the GI Bill.



MAUSOLEUMS ★ MONUMENTS
BRONZE TABLETS ★ MARKERS

BECKER MEMORIALS
6033 Jackson Road
ANN ARBOR, MICHIGAN

CONSOLIDATED REPORT OF CONDITION OF Chelsea State Bank

of Chelsea, Michigan 48118, at the close of business March 28, 1973, a state banking institution organized and operating under the banking laws of this State and a member of the Federal Reserve System. Published in accordance with a call made by the State Banking Authorities and by the Federal Reserve Bank of this District.

ASSETS	Dollars	Cts.
Cash and due from banks (including no unposted debits)	\$ 1,823,999.70	
U. S. Treasury securities	5,265,356.84	
Obligations of other U. S. Government agencies and corporations	200,000.00	
Obligations of States and political subdivisions	3,069,971.25	
Other securities (including \$36,000.00 corporate stocks)	59,350.00	
Federal funds sold and securities purchased under agreements to resell	1,800,000.00	
Other loans	12,859,778.27	
Bank premises, furniture and fixtures, and other assets representing bank premises	309,743.77	
TOTAL ASSETS	\$25,388,199.83	

LIABILITIES	Dollars	Cts.
Demand deposits of individuals, partnerships, and corporations	\$ 4,512,115.42	
Time and savings deposits of individuals, partnerships, and corporations	15,887,122.03	
Deposits of United States Government	280,665.76	
Deposits of States and political subdivisions	1,673,219.95	
Certified and officers' checks, etc.	202,745.29	
TOTAL LIABILITIES	\$22,995,185.70	

RESERVES ON LOANS AND SECURITIES	Dollars	Cts.
Reserve for bad debt losses on loans (set up pursuant to IRS rulings)	\$ 192,104.72	
TOTAL RESERVES ON LOANS AND SECURITIES	\$ 192,104.72	

CAPITAL ACCOUNTS	Dollars	Cts.
Equity capital, total	\$ 2,200,959.41	
Common stock—total par value	400,000.00	
(No. shares authorized)	8,000	
(No. shares outstanding)	8,000	
Surplus	800,000.00	
Undivided profits	900,959.41	
Reserve for contingencies and other capital reserves	100,000.00	
TOTAL CAPITAL ACCOUNTS	\$ 2,200,959.41	

TOTAL LIABILITIES, RESERVES, AND CAPITAL ACCOUNTS	Dollars	Cts.
	\$25,388,199.83	

MEMORANDA

Average of total deposits for the 15 calendar days ending with call date \$22,788,709.00

Average of total loans for the 15 calendar days ending with call date 12,952,074.00

Deposits of the State of Michigan 20,945.54

I, Paul E. Mann, President of the above-named bank do hereby declare that this report of condition is true to the best of my knowledge and belief.

PAUL E. MANN

We, the undersigned directors, attest the correctness of this report of condition and declare that it has been examined by us and to the best of our knowledge and belief is true and correct.

PAUL G. SCHAEUBLE, JR.
ROBERT L. DANIELS
F. W. MERKEL
Directors

State of Michigan, County of Washtenaw, ss:
Sworn to and subscribed before me this 6th day of April, 1973.
Wallace Wood, Notary Public
My commission expires, December 14, 1975.

In your spare hours... PROFITS-A-PLENTY ...the Miles way

Extra time? Earn extra cash. Pay yourself \$12 per hour. Build a Miles Precut Home. Do it yourself and save thousands. No need to save cash for big down payment. Build it and pay yourself. No need to pay high labor costs. You save on labor, materials and time. Payments are less because you owe less. Free delivery. Write now!

PLEASE RUSH ME YOUR FREE CATALOG ON MILES BUILD IT YOURSELF HOMES

Name _____

Address _____

City, State, Zip _____

Precut MILES HOMES
17016 Mack Ave., Green Pointe, MI 48236, Call 313-885-5549

There is a Miles local representative in your area

WHY PAY RENT, BUILD A MILES HOME

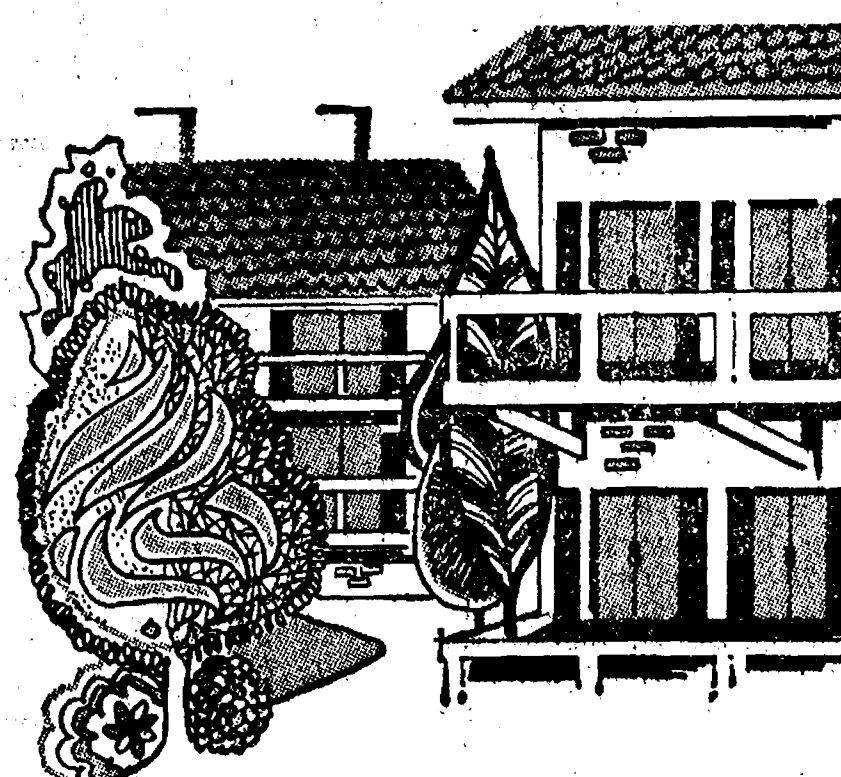
CHELSEA FINANCE CORP.

\$25 to \$1,500

For Any Worthwhile Purpose

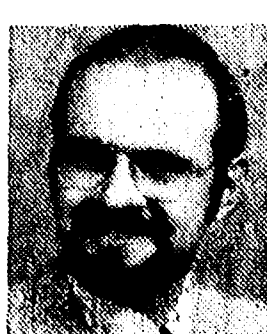
See or Call
FRANK HILL
at 475-8631

111 PARK STREET
CHELSEA, MICH.



You and Your Apartment...

...one of the reasons we're in business. Our apartment dwellers policy insures clothes, valuables, jewelry, furniture and artwork if stolen or destroyed in or away from your apartment. And snowmobile and outboard motorboat liability is yours... at no extra cost. Check the facts with Charlie Foster or...



DAVE ROWE
475-8065



DOUG ROBESON
475-7389

FARM BUREAU INSURANCE GROUP

Farm Bureau Mutual • Farm Bureau Life
Community Service Insurance • Community Service Acceptance

Battle of Bands Reports 20 Entries Signed

With the first night of competition only a couple of weeks away, rock music groups in many southeastern Michigan communities are sharpening up their acts for the Saline Jaycee's seventh annual Band Battle '73. Groups from Adrian, Ann Arbor, Belleville, Brighton, Chelsea, Dexter, East Lansing, Howell, Milan, Saline and Ypsilanti are already entered in the event.

During the three-night competition, a field of 20 bands will compete for applause of several thousand rock fans and for prizes valued at nearly \$2,000.

Preliminary competitions on April 21 and 23 will see 10 bands each night competing before a judging panel of professional musicians, with the top five bands from each night advancing into the May 5 finals.

Band Battle is held at the Farm Council Building on Saline-Ann Arbor Rd., at Pleasant Lake Rd. There is continuous music from 8 p.m.

The Chelsea group entered in Band Battle is called "American Jam."

MSU SCHOLARS

East Lansing—For the eighth consecutive year, Michigan State University led the nation in the number of National Merit Scholars enrolled in 1971-72.

Lift Lower Michigan Loud Weight Limits

Lansing—Spring weight restrictions have been removed from all seasonal state highways in the Lower Peninsula, the Department of State Highways reports.

Restrictions were imposed on approximately 500 miles of seasonal state highways in Lower Michigan March 7, when spring thaws began. Restrictions remain on all seasonal state highways in the Upper Peninsula.

YES
WE ARE MAKING
LONG-TERM FARM
REAL ESTATE
LOANS

SEE US

Federal LAND BANK Association

P. O. Box 1006
Ph. 769-2411 3645 Jackson Rd
Ann Arbor, Mich. 48103

Real Estate One.
WEED REALTY, INC., ASSOCIATES
REALTORS

475-8693

1196 M-52, CHELSEA

CALL OR STOP IN

CHELSEA GLASS WORKS

WORKMANSHIP AND MATERIALS FULLY GUARANTEED.

Open Daily 8 a.m. to 5 p.m.; Sat. 8 a.m. to 1 p.m.

140 W. Middle, Chelsea Phone (313) 475-8667

WE REPAIR AND REPLACE:

- ★ STORE FRONTS
- ★ FURNITURE TOPS
- ★ SHOWER DOORS
- ★ THERMOPANES
- ★ AUTO GLASS - Including Windshields
- ★ MIRRORS
- ★ PATIO DOORS
- ★ TUB ENCLOSURES

Free Pick-up and delivery on auto work.

Storm Door & Window Reglazing & Screens

COMMERCIAL BUILDINGS OR RESIDENTIAL

PROMPT SERVICE

REASONABLE PRICES

personalized

MATCHES

with name or initials
imprinted

48-HOUR SERVICE
When Requested

Yellow - Green - Blue

Reg. \$3.00 Value **\$2.00**
50 Books

METALLIC

Gold - Silver - Light Green

Reg. \$3.50 Value **\$2.50**
50 Books

NAPKINS

Personalized with
your name or initials.
(Makes a nice gift, too!)

100 for \$3.25

Luncheon or Beverage sizes.
Choice of several colors.

The Chelsea Standard

300 North Main Street
PHONE 475-1371

social printing



CARL "DUTCH" SCHWIEGER has left the employ of North American Rockwell after almost 38 years with Rockwell International and its predecessor companies. He worked in several supervisory capacities at the local plant, the latest being general foreman, until retiring April 1. Schwieger began his career with Falls Spring & Wire Co., in Detroit, and was one of the first men to be transferred to the Chelsea plant back in June 1939. Shown in the photo, with Schwieger in the center, are Bob Rudd, plant superintendent on the left and Donald Baldwin, plant manager on the right. The retiree plans to hunt and fish and perhaps travel to Germany during his newly-found leisure hours.

Beverly Bott Wins Scholarship

Jackson Business University has been notified that Miss Beverly B. Bott has been awarded a \$900 scholarship to the college. She is a senior at Chelsea High school. The \$900 scholarship is awarded by the Michigan Business Schools Association on a competitive basis. The applicants are selected on high school record, extracurricular activities, and talent. She is the daughter of Mr. and Mrs. Norman Bott, 10526 Boyce Rd.

OEO Future Future Still Uncertain

Approximately 300 people, including several representatives from Chelsea, attended the meeting of the Office of Economic Opportunity Councils, Tuesday night, in Ypsilanti. The two-hour meeting concerned the future of OEO in Washtenaw county.

Lois Mayfield, chairman of the main OEO board in Ann Arbor, introduced the board members, which includes Mary Lou Stoddard, chairman of Chelsea's council and Jon Passow, Chelsea's teen representative, while explaining the board's function.

OEO's many programs, Planned Parenthood, legal aide, day care centers, senior citizens, foster grandparents and the National Youth Corps, were illustrated by a slide program shown by OEO directors, Steve Schlesinger and Clarence McFall. Chelsea's teen center, "Equinox" was pictured in the slides as one example of OEO's activity in community life.

Bill Holt, technical advisor, then led a discussion concerning the recent slash in funding and requested that concerned persons write local and state representative in protest.

Randy Doby, who is affiliated with both Manpower and National Youth Corps, explained that national funding had allotted \$424 million for youth jobs and another \$34.4 million for summer jobs. He queried, "Hire the son or the father?" There won't be money enough for both.

The dilemma of who is to get the money was commented on by Jim Walters, county commissioner, who said "We are fighting over crumbs." He too urged citizens to write to Esch, Griffin and Hart.

Those attending agreed that pressure should be put on Nixon to reinstate OEO and a member of the OEO board, Mrs. Dorsey said, "It's time to stop waiting and start doing something, like go to Washington."

Mrs. Ross asked, "when are we going?" and the audience burst into applause amid shouts of "get the buses."

In close consultation with the Department of Defense, the VA has readied its plans to provide all needed assistance to returning POWs, and to the families of servicemen missing-in-action.

Most Crimes Show Increase In Past Year

"We are inheriting the ills of Detroit and Ann Arbor," says Police Chief George Meranuck as he summarized the crime report for 1972. During the year, the incidence of every kind of crime, except violent crimes, increased appreciably.

While there were two armed robberies, both at a gas station in the village, during 1972, there were no unarmed robberies. These figures indicate only a slight, though disturbing, increase of this kind of crime. There had not been an armed robbery in the village since 1967. One unarmed robbery occurred in 1971.

There was no increase in assaults, however. There were 10 such cases in both 1971 and 1972.

Breaking and entering cases, on the other hand, jumped in number. Ten occurred in businesses and another five in dwellings which adds up to seven more than in the previous year. There were three unsuccessful attempts, as opposed to two in 1971.

Eight automobiles were stolen in 1971; 10 were taken in 1972. These were a portion of the 106 larcenies in the village during 1972. There were 74 reported larcenies in 1971.

While incidents of malicious destruction of property and drunk and disorderly conduct were on the increase, cases of drug abuse remained at four. Accidents involving adult drivers jumped to 95 from 73 recorded in 1971.

The number of arrests increased by only one for a total of 69, but the number of written complaints received by the police department was a staggering 737. This figure has increased steadily since 1969 when it was a manageable 333. In 1971, 568 complaints were filed.

According to the chief, these swelling figures are easily explained by the influx of population to the area. While the village remains nearly the same in size, it is not immune to the forces surrounding it.

Hockey Team Clobbers Their Fathers

3-D Sales & Service's hockey team ended the season last week on a note they will not soon forget. They arrived at Jackson Arena expecting to face a tough Canadian team. Instead they faced a burly line composed of their fathers.

In the pre-game pep talk, they had been told the opposition's goalies had not been scored upon all season. That proved to be true. In fact, most of the team hadn't been on the ice for years.

A bruising game followed with several penalties being called on the senior team. One penalty, for example, was levied for being overweight. But that wasn't the dad's only problem.

White, the fathers' goalie, threatened at one point to sue his teammates for lack of support. His desperation got so great that he turned his goal around and crawled



MUD, MUD AND MORE MUD—Except for the vintage of the car, this half-century-old photo of a mud-mired auto on a country road in Michigan could have been taken this spring. Unpaved roads and streets in large areas of south-central and south-eastern Michigan, and much of the Upper Peninsula, are swaths of mud, the result of the worst spring break-up in recent memory.

Chelsea Bulldogs 1973 Baseball Schedule

Thursday, April 19—Novi, home	4 p.m.
Monday, April 23—Manchester, home	4 p.m.
Tuesday, April 24—Dundee, away	4 p.m.
Wednesday, April 25—Dexter, home	4 p.m.
Friday, April 27—South Lyon, home	4 p.m.
Tuesday, May 1—Milan, away	4 p.m.
Friday, May 4—Dexter, away	4 p.m.
Tuesday, May 8—Saline, home	4 p.m.
Wednesday, May 9—Willow Run, home	4 p.m.
Friday, May 11—Lincoln, away	4 p.m.
Saturday, May 12—Stockbridge, away	2 p.m.
Tuesday, May 15—Novi, away	4 p.m.
Friday, May 18—Dundee, home	4 p.m.
Saturday, May 19—Tecumseh Tournament, away	9 a.m.
Tuesday, May 22—South Lyon, away	4 p.m.
Friday, May 25—Milan, home	4 p.m.
Saturday, May 26—Pre-Districts	Location to be announced
Saturday, June 2—Districts	at Chelsea
Saturday, June 9—Regionals	at Marshall
Saturday, June 16—State	at East Lansing

Alert Officer Nabs Wanted

Chelsea policeman David Peebles proved he is "on his toes," even at 4:50 a.m., last Saturday morning, when he arrested young John Parker Banks of Romulus.

Banks was wanted by the Clinton police on a charge of being a

minor in possession of liquor, a fact Peebles discovered after stopping the youth for speeding.

Peebles first noticed the car Banks was driving as it proceeded through town at a high rate of speed. Peebles followed the vehicle with the patrol car and clocked Banks' speed at 50 mph in a 25 mph zone.

Once he had stopped the youth, who turned 18 in February, he made a routine check with the Law Enforcement Investigation Network and discovered the youth's record.

Chief George Meranuck praised Peebles for his alertness, and pointed to the incident as an example of the effectiveness of the Chelsea Police Department's 24-hour vigil.

minor in possession of liquor, a fact Peebles discovered after stopping the youth for speeding.

Peebles first noticed the car Banks was driving as it proceeded through town at a high rate of speed. Peebles followed the vehicle with the patrol car and clocked Banks' speed at 50 mph in a 25 mph zone.

Once he had stopped the youth, who turned 18 in February, he made a routine check with the Law Enforcement Investigation Network and discovered the youth's record.

Chief George Meranuck praised Peebles for his alertness, and pointed to the incident as an example of the effectiveness of the Chelsea Police Department's 24-hour vigil.

STEEL TOE WORK SHOES

6- and 8-inch
By



WOLVERINE®

STRIETER'S MEN'S WEAR

"The Place To Go for Brands You Know"

Have A Happy Easter
with

FLOWERS

from

GAR-NETT'S FLOWER & GIFT SHOP

112 E. Middle St., Chelsea

Ph. 475-1400

BEAUTIFUL HYBRID LILIES AND OTHER PLANTS

Join the Easter Parade
With A Beautiful Corsage

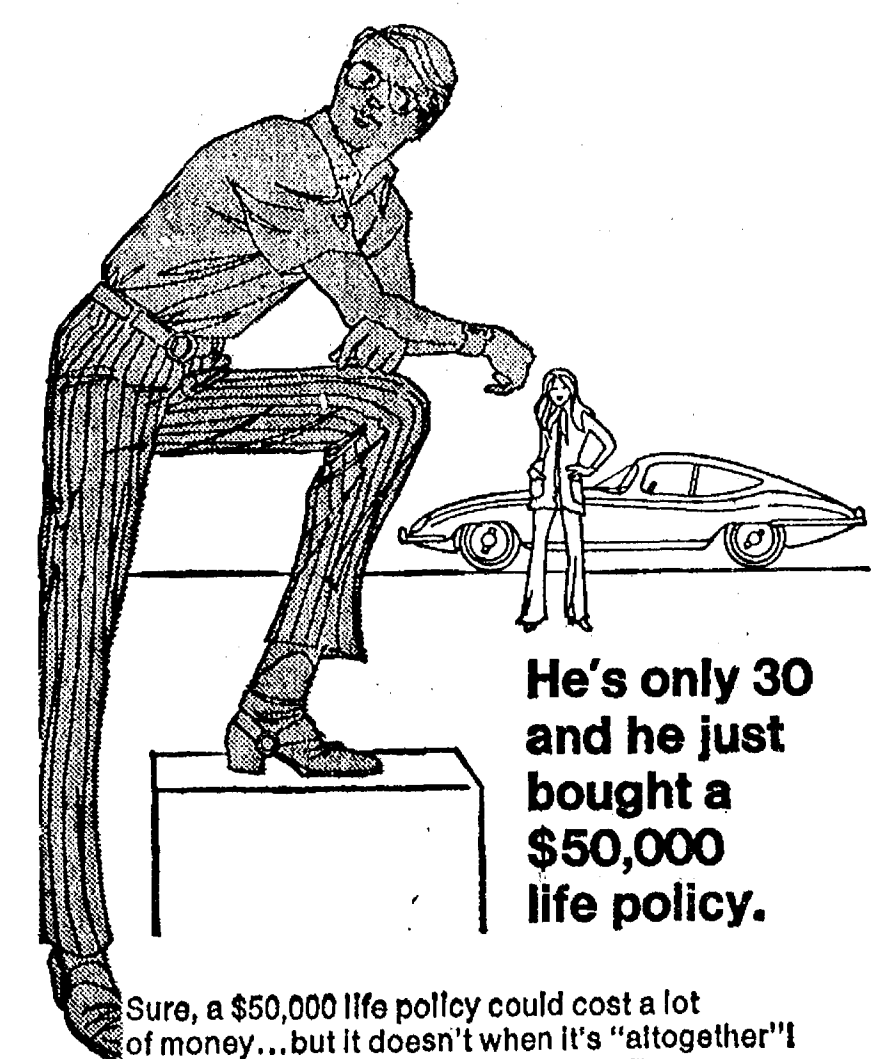
We can also add fresh flowers
to your Easter Bonnet.

Set the Easter table in a different way
with one of our beautiful centerpieces.

\$3.98 and up.

SEND EASTER GREETINGS
TO YOUR LOVED ONES
Via FTD or TELA-FLORA

OPEN THIS THURS. NITE WE DELIVER



He's only 30
and he just
bought a
\$50,000
life policy.

Sure, a \$50,000 life policy could cost a lot of money...but it doesn't when it's "altogether!" When we say "altogether" we mean Perma-Term—permanent and term insurance combined to avoid those big premiums, but still deliver the big protection young family men need. It means you could have a \$50,000 policy which lets you build up a retirement income at the same time! Yes, Perma-Term's easier on the budget, but please remember that costs go up as you grow older. So give us a call now—before another birthday gets past you altogether!

it's better
altogether

A. D. MAYER AGENCY, INC.

115 PARK ST., CHELSEA
BOB BARLOW, AGENT
PHONE 475-2030



Auto-Owners Life Insurance Company

Faster gains from better FEEDS

Calves get growing and gaining faster, on our balanced, fortified Calf Feed...enriched with needed vitamins, minerals.

Complete feeding rations for all your livestock, poultry.

FARMERS' SUPPLY CO.

PHONE 475-1777

JET SPRAY CARPET CLEANING*

Clean your carpet the right way With the Most Modern Professional Carpet Cleaning Equipment.

Our JET SPRAY
Extraction System will leave
Your Carpets Far Cleaner.
See the Soap and Soil Removed

Since we don't use detergents which trap the ground-in dirt your carpet can stay cleaner for a longer period of time.

Remember: Good Carpeting
Deserves Good Care.

SPRING CLEANING SPECIAL
INTRODUCTORY OFFER:

1/3 OFF REG. PRICE
(FOR MONTH OF APRIL ONLY)

For A Free Estimate Phone: 475-1509
or 761-3025 and ask for John Lixey

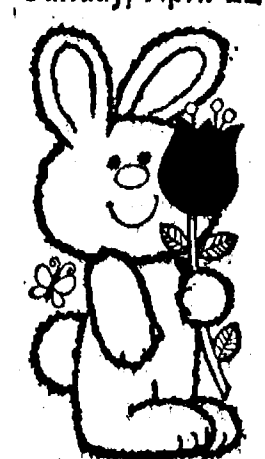


Charge it on BankAmericard.

A Division of R.E.T.S. Printing, Inc.

Easter Cards

Sunday, April 22



SANDER'S
CANDIES

Now On Display

CHELSEA CARD
& GIFT SHOP

116 S. Main St.
Phone 475-7501

BEEF BARN PACKING CO.

Phone (517) 782-3000

3095 COOPER ST.

JACKSON, MICH.

Monday thru Thursday

9 a.m. to 6 p.m.

Friday and Saturday

9 a.m. to 7 p.m.

Sunday

9 a.m. to 2 p.m.

WATCH FOR EACH WEEK'S SPECIALS

WHOLE OR HALF

Slab Bacon...lb. 69c

Pork Steak...lb. 89c

Sliced Bacon...lb. 79c

1-LB. PKG. ECKRICH ALL-MEAT
Hot Dogs.....89c

BORDEN'S PRE-SLICED

American Cheese,

Hamburger

5-lb. brick....\$4.50

10-lb. bag...lb. 79c

CUSTOM BEEF PROCESSING

6¢ lb.

Trucking \$5

Butchering \$5

WE SELL SIDES & QUARTERS

TWO WAR VIGILS

Orlando, Fla.—Mrs. Charlton Browning kept a lonely war vigil in two wars. Her husband was taken prisoner in Germany in 1943 and she learned of his release from a newspaper article. Her son, Tommy, shot down over North

Vietnam in July, 1966, was recently released.

The flying wedge was outlawed in football when President Theodore Roosevelt threatened to ban the game by executive edict unless players quit being so rough.



D. R. ELWART, D.C.

In November, Mas and Ken Legere were desperate! Their four-year-old son Todd was not expected to live much longer because of severe allergies, asthma and eczema. He spent much of his time in a hospital oxygen tent. He was getting allergy shots and massive adult dosages of adrenalin, which greatly speeded up his heart rate.

heart massage in case the drugs were too hard on Todd. Actually, the drugs helped out very little as Todd's body became immune

Mrs. Legere was taught mouth-to-mouth resuscitation and to them, "Todd was a very nervous, high-strung boy," said Mrs. Legere, "no wonder, with all that junk pumped into him." The Legeres had taken Todd to many allergy specialists and other MDs; there was nothing more any of them could do. Todd was near death.

One day the Legeres heard a chiropractor on the radio discussing asthma. They were desperate, and decided to give chiropractic a try. Todd improved noticeably after his very first adjustment. Further improvement was rapid. It was not long before all allergy shots and medication were permanently discontinued. Since his first adjustment, Todd has not been inside a hospital, yet he is 99% well and has never looked or felt better!!

The entire Legere family has benefited tremendously from chiropractic; none has visited an MD or needed medication since starting chiropractic adjustments and they all enjoy "the treasure of excellent health." "We are so thankful to our chiropractor for making our son normal, a boy who really 'lives' not merely 'exists'."

Mrs. Legere has a final message to share, "I wish more chiropractors advertised their services to the public. If we had known about chiropractic sooner, Todd would have been saved much misery. I know that many more people would give it a try if they only knew about the chiropractic doctors of health!"

Of course, chiropractic is not just for children. If you have been helped by chiropractic, encourage your husband to give chiropractic a try for his health problems. Maybe you have never been to a chiropractor — there is no time like the present to start! Believe me, if you are healthy, you will have a happier marriage.

DON'T PUT IT OFF . . . IT WON'T "GO AWAY."
HOURS: Mon., Wed., Fri., 9-12, 2-5, 6-3; Sat., 9-12.
CLOSED TUES., THURS., SUN.

CHIROPRACTIC FOR LIFE CHIROPRACTIC CENTER

7970 CLARK LAKE RD. CHELSEA, MICH. 475-7633
We're across the road from Clark Lake on M-52, 1/2 mile north of Waterloo Rd.
IF LOST, 475-7633

Massey Ferguson lawn and garden tractors. Performance to keep you ahead. Service to back you up.

7, 8, 12 and 14 h.p. models give you all the power you need to stay ahead of lawn and garden work. Every machine is tough, dependable . . . and we back them up with parts and service! Wide variety of attachments let you use your MF tractor all year 'round.



Consider the world's largest maker of tractors first



Come out ahead on a deal, too! Come in now!

CHELSEA - NORTH LAKE SALES & SERVICE
14050 N. TERRITORIAL ROAD

Chelsea Bulldogs 1973 Track Schedule

Friday, March 20—Huron Relays (Ypsilanti)	12:30
Wednesday, April 4—Stockbridge, home	4:00
Friday, April 6—Spartan Relays (East Lansing)	11:00
Thursday, April 12—Saline, away	4:00
Tuesday, April 17—Novi, home	4:00
Thursday, April 19—Lincoln, home	4:00
Monday, April 23—Dexter, home	4:00
Saturday, April 28—Albion Relays, Albion	9:30
Tuesday, May 1—Dundee, away	4:00
Thursday, May 3—South Lyon, home	4:00
Saturday, May 5—Cardinal Relays (Mich. Center)	3:00 & 7:00
Tuesday, May 8—Milan away	4:00
Saturday, May 12—Regional, Mich. Center	10:00
Wednesday, May 16—Conference, Chelsea (tentatively)	3:00
Saturday, May 19—State, Flint Northwestern	10:00
Tuesday, May 22—Jackson Honor Roll, Mich. Center	

Letters to the Editor

Dear Editor:

This is a belated commendation from a survivor of the recent snow storm in Michigan. Warm hospitality was extended to me and my family by the James Hoffmeyer family until we could travel further west. During the time there I had the opportunity to visit the fairgrounds, high school, and Methodist church operations, and we are aware that many other homes were opened to stranded people.

The willingness of people to help those of us who were traveling and then hopelessly stuck should not be underrated or forgotten. To see people working together as they did was encouraging. I think it shows that there are still communities that can be brought together in united effort when it is necessary. We are led to believe that impersonal relations are the norm for our cities and towns. The odd crisis like this brings out the good in people and can teach an encouraging lesson. "Thank you" to the people of Chelsea.

Sincerely,
G. F. Stephens, Pastor of
Willowdale Baptist Church
Willowdale, Ontario

Six Chelsea Students Named to Dean's Honor List at MSU

Six Chelsea High school graduates have been named on the Michigan State University Dean's Honor Roll for their academic performance during the winter semester. They are: Cynthia S. Chandler, Stephen L. Diedrich, Jeanne Haselschwardt, Kenneth P. Kusterer, Charles C. Lane, and Dennis J. Stoffer.

Subscribe today to The Standard!

Street Art Fair Dates Set in July

The dates for the 14th annual Ann Arbor Street Art Fair have been announced. The Fair, one of the best juried shows in the country, will take place on S. University in Ann Arbor, Wednesday, July 18 through Saturday, July 21. Hours of the Fair are from 9 a.m. to 10 p.m. Wednesday through Friday and from 9 a.m. to 5 p.m. on Saturday.

The Fair annually attracts more than 100,000 persons who come to see and buy the works of nearly 300 artists. The artists, many of whom have achieved national reputations for their work, not only display their works during the show, but create new works as the crowds file past. Virtually every bonafide art medium may be seen at the Fair as well as demonstrations of glass blowing, ceramics, wood carving, printmaking, jewelry, weaving, spinning, painting, metalworking, welding, clay sculpture, enameling and blacksmithing.

Demonstrators will come from Michigan, Illinois, Ohio, and Wisconsin, while other artists come from as far away as California, and across the Canadian border giving the show an international flair. Last year 16 states were represented by the artists.

The show is the best in Michigan and has an international reputation for its excellence. The Fair dates back to its first spontaneous year of 1959 when the art was hung on clothes lines between the parking meters along S. University. Today 10-foot square booths are constructed in the middle of a street normally busy with vehicular traffic. The area is located in the S. University business district which borders on the University of Michigan campus in Ann Arbor. The booths are put up by the S. University merchants who donate their time first repairing the booth sections, then building the booths for the Fair. They keep a day and night vigil over the Fair to assure that it runs smoothly. Finally, they dismantle the entire Fair the last day, leaving the street spotless. Although many new people volunteer their time each year, many have been working with the Fair committee over its entire 14-year history.

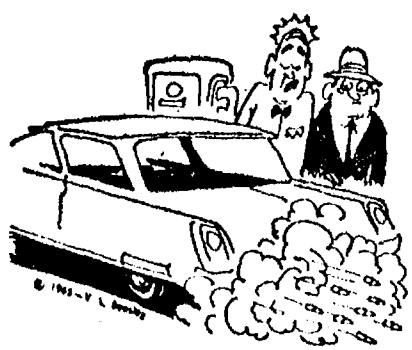
Those wishing further information may send their name and full address to Box 1352, Ann Arbor.

Two Chelsea Students Named to Ferris College Academic Honors List

Mary M. Baize and Lynn A. Visel, daughters of Chelsea residents, achieved scholastic excellence during the winter quarter at Ferris State College. They were among 1,217 students named to the Academic Honors list by Dr. James V. Farrell, vice-president for academic affairs.

To be named to the list a student must earn at least a 3.25 average on a 4.0 basis and carry a full academic load.

Mobil-Toons By GLENN



"Too much lead . . . I guess."

There is no guess work about our service. Give us a try soon.

GLENN'S MOBIL SERVICE

1629 M-52 & I-94
CHELSEA, MICHIGAN
Phone 475-1767
GLENN HEIM
PROP.

Track Team Loses Opener To Saline

Chelsea's varsity track team came up short, last Thursday, in what could be a telling match in the conference title race. The meet, which Saline took on their own ground, 73-50, was significant in that it was the conference dual meet opener for both top-rated title contenders.

Said Coach Bert Kruse, "It could well determine the winner of the dual meet portion of the over-all league race."

The meet offered few surprises except for Chelsea's let-down in the sprints. Chelsea had expected to have considerable lead after the field events, which it, indeed, had. Saline was charted to make up the deficit in the distance runs, which they did.

The upset came in the hurdles and sprints where Chelsea expected to break even. Chelsea's hopes were dashed when Saline got one-two finishes in both the 100- and 220-yard dashes.

A disqualification in the 440-yard run cost Chelsea a one-two finish in that event. This cut another three points from the total.

The big scorer for Chelsea was Bruce Guster who won the long jump and the 440-yard dash, as well as running on the winning 880 and mile relay teams. Rick Sweeney produced an impressive effort in the high jump, winning the event with a six-foot leap.

Chelsea's only first- and second-place showing was in the pole vault. Tim Lancaster took first, flying over 10 feet with Don Pierson only a hair's breath behind.

Other firsts were taken by Craig Coltre in the 180 low hurdles and by the mile relay team composed of Don Pierson, Jeff Marshall, Jeff Van Riper and Bruce Guster. Lee Ferguson, Craig Coltre, Bruce Guster and Karl Gauss earned a first on the 880 relay race.

Second-place winners for Chelsea were Ishmael Picklesimmer who tossed the shot 44'5" and Bill Tite who did the 120-yard high hurdles in :17.7.

Craig Coltre, following Bruce Guster's winning 19'5" long jump, leaped to a third-place standing with a 18'1" leap. Another third-place winner was Bill Tite who made it over 5'8" in the high jump event. Jeff Marshall in third was the only Chelsea man to place in the 880-yard run.

John Beeman's 5:22 time in the mile run earned a third place. Similarly, Karl Gauss' :11.2 time in the 110-yard dash was worth a third-place finish. Gauss took another third in the 220-yard dash with a :24.8 time.

On the home track, Chelsea will face Lincoln today and Dexter on Monday. All home meets start at 4 p.m.

Area Students Earn Degrees at Eastern Michigan

Eastern Michigan University conferred degrees on 1,589 seniors and graduate students at its 120th Spring Commencement April 15. A crowd of more than 5,000 attended the ceremonies in Bowen Fieldhouse on the campus.

The largest single category of baccalaureate degrees was bachelor of science. Of the 894 awarded, three went to Dexter residents: Bonnie Craig, 7870 Base Lake Rd.; Richard Grannis, 8074 Huron St.; and Barbara Samuelson, 2025 Baker. Shirley DeBoer of 10784 Nine Mile Rd. also received a Bachelor of Science degree.

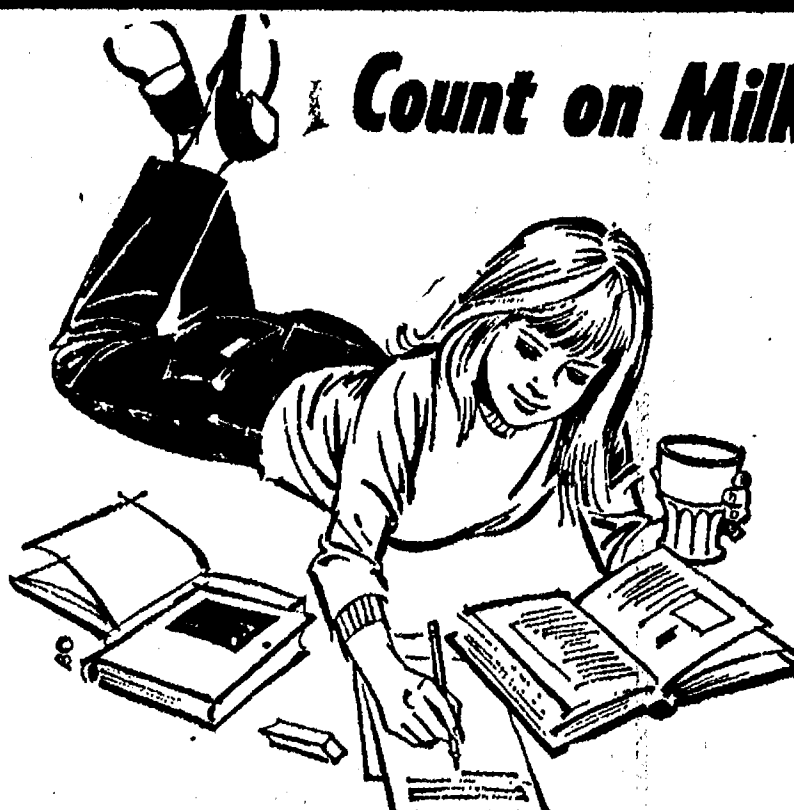
Two Chelsea youths also earned degrees. They are Ralph Johnson of 2800 Sylvan Rd., who earned a Bachelor of Business Administration, and Stuart Knapender, of 1185 S. Fletcher, who earned a Bachelor of Arts degree.

Other new Bachelor of Arts degree holders are Frances Honeycutt of 7638 Jennings Rd., Whitmore Lake; Janice Nall of 116 Ann Arbor St., Manchester; and Sandra Eisele, 13953 Gilbert Dr., North Lake.

The reason hearing loss victims often are considered irritable and difficult to get along with is because communicating with a person suffering from an unrelieved hearing impairment can put both parties under a strain.

Timothy D. Chaffee On Ferris Honor List

Timothy D. Chaffee was one of 1,217 students honored by Ferris State College for academic excellence during the winter quarter. To be named to the Academic Honors List a student must earn at least a 3.25 average on a 4.0 basis.



Count on Milk!
For a real energy pick-up whenever you need it . . . for the enjoyment that comes from a drink that tastes great as it refreshes you . . . count on milk! Make it a delicious part of your day, every day. Call us for regular home delivery.

Hickory Ridge Farm Dairy

(Successor to Weinberg Dairy)
Stockbridge, Mich. Phone (517) 851-3000

FOR SALE

WASHTENAW COUNTY ROAD COMMISSION

CARS - PICKUPS MISCELLANEOUS MAINTENANCE EQUIPMENT

The Washtenaw County Road Commission will accept bids from prospective purchasers on the following items:

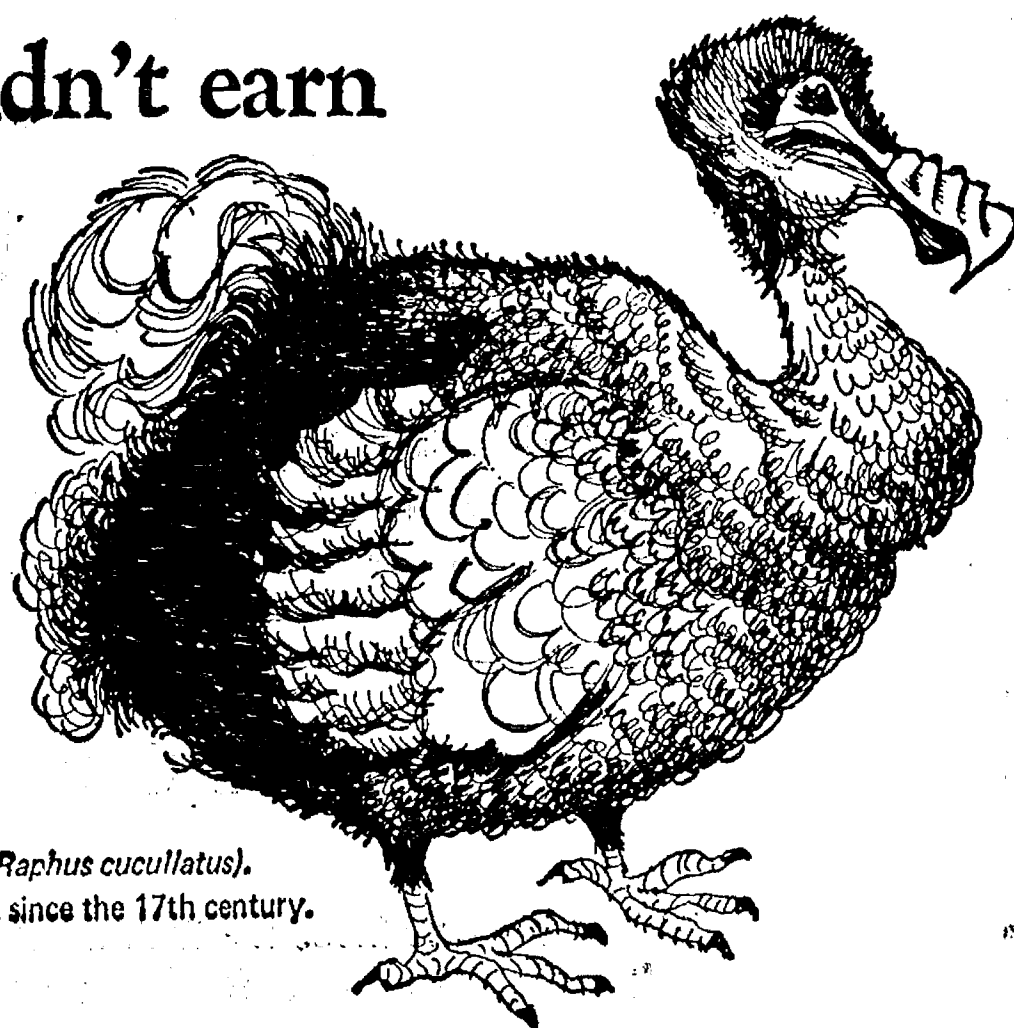
- | | |
|--------------------------------|--------------------------------|
| 2 - Mercury Sedans 1970 | 6 - FoFrD Pickups - 1970, 1971 |
| 1 - Dump Trailer 1949 | 1 - Lowboy Trailer 1933 |
| 1 - Scraper Pan 1940 | 5 - Snow Plows |
| 12 - Tailgate spreaders | 1 - Tractor 1940 |
| 1 - Toro Riding Mower 58" 1966 | 2 - Trailer Chassis 1959 |
| Other Miscellaneous Equipment | |

Bids will be accepted by the Washtenaw County Road Commission from 8:00 a.m. to 4:00 p.m. April 27, 1973 at District Yard No. 1, 555 North Zeeb Road, Ann Arbor, for the items listed above. Bids will be considered on an individual item basis and will be sold to the highest bidder on an as is basis.

All items sold on a cash basis and items must be removed from Road Commission property within one week.

The Washtenaw County Road Commission reserves the right to reject any and all bids.

Realtors, too, would be extinct
if they didn't earn
their fee.



Dodo (Raphus cucullatus).
Extinct since the 17th century.

If it were so easy to sell houses, Realtors would have been out of business long ago. Realtors earn their commissions, because they are professionals. With their help, you can avoid the pitfalls of do-it-yourself transactions, whether you're buying or selling. See your Realtor.

- A Realtor advises as to a realistic price for the property. He knows the market and does the comparison shopping for you.
- A Realtor shows a house to prospective purchasers only when it meets their requirements and they can meet the seller's terms. And he shows it only at the purchaser's and seller's convenience.

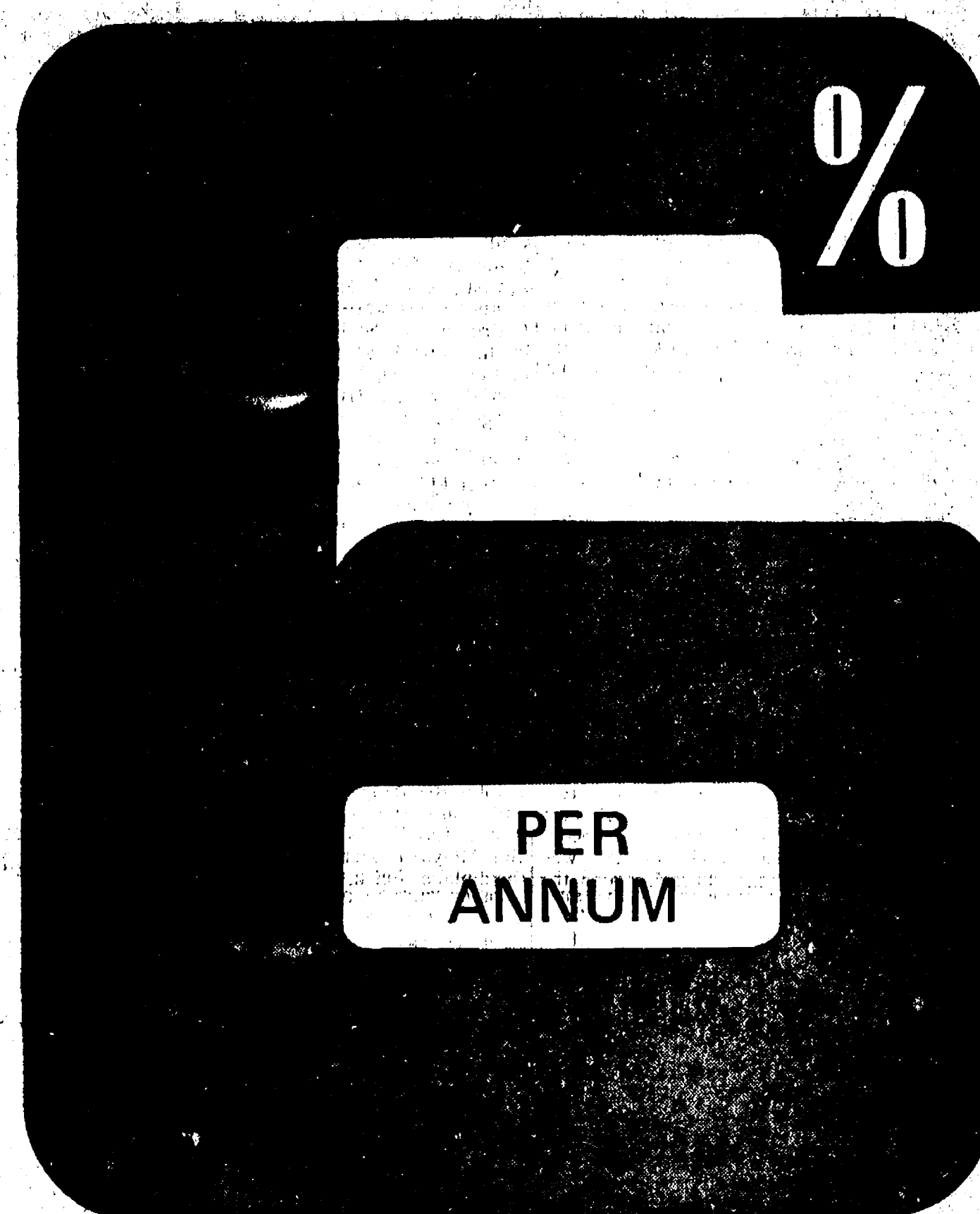
- A Realtor can answer technical questions on all types of financing.
- A Realtor, as a third party, can negotiate the transaction diplomatically. The purchaser can (and is encouraged to) express his objections and gets estimates on what the necessary changes will involve. A Realtor suggests how the seller can put his home into prime condition for selling but not make needless outlays for improvements.
- A Realtor works with your attorney so that all documents are handled properly—and legally. The purchaser and the seller understand the terms of the agreement and are assured that the contract is valid.

See a Realtor.

The professional who displays this seal.



HIGHER RETURN NO RISK



6.13% EFFECTIVE ANNUAL RATE
PASSBOOK CERTIFICATE ACCOUNT

STILL THE BEST PLACE FOR YOUR INVESTMENT DOLLARS

This is the one investment you can depend on to deliver a high solid return and to maintain its value. If you deposit \$10,000 in an Ann Arbor Federal Savings PASSBOOK CERTIFICATE ACCOUNT, you are assured of \$613.00 earnings each year. Your \$10,000 will not erode with market fluctuations, and it is safely insured to \$20,000 with the Federal Savings and Loan Insurance Corporation.

You can have these 6% per annum Passbook Certificate Accounts in amounts of \$5000 or more with two year minimum term. This is the highest paying certificate in Washtenaw County.

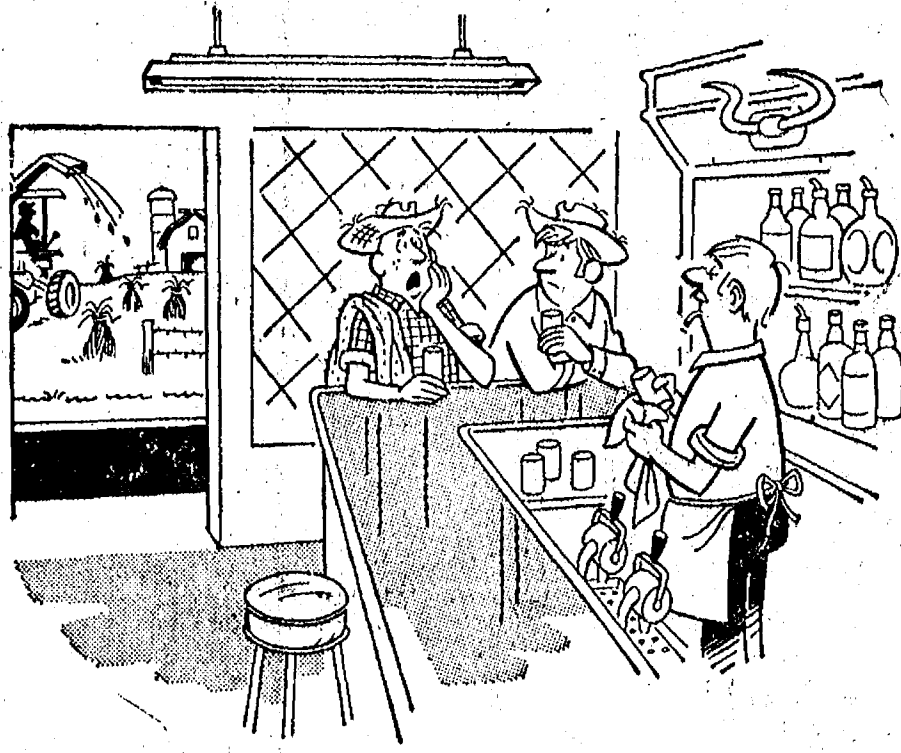
We also have 5% per annum Passbook Certificate Accounts with term of one year and minimum amount \$5000. Effective annual rate is 5.87%. Then there is a 5% per annum Passbook Certificate Account with term of only six months and minimum amount \$1000. Effective annual rate is 5.35%. Early withdrawals are subject to penalty as required by federal regulation.

If you want a guaranteed higher return from your money with no risk, an Ann Arbor Federal Savings Passbook Certificate Account is your best bet.

ANN ARBOR ~~AAFS~~ FEDERAL SAVINGS
the savings and loan specialists

ANN ARBOR OFFICES—Downtown, Liberty at Division; Westside, Pauline at Stadium; Eastside, Huron Parkway at Platt; Northside, Plymouth at Nixon; CHELSEA—Main Street near Old U.S. 12
Member: Federal Home Loan Bank System • Federal Savings and Loan Insurance Corporation

LAFF OF THE WEEK



"I wasn't even replaced by a machine. They just put an attachment on an old one."

TEACHER TOPICS

Effective communication through-out a school system is vitally important to the success of that system! Why do we believe this? Because without effective communication the following can happen:

1. Misinformation can lead to damaging rumors in the community.
2. A lack of trust may develop between the schools and the citizens.
3. Students needs may not be met due to a lack of awareness of individual problems, both at home and at school.
4. Teachers, administrators and parents may tend to draw into separate groups, instead of working together for common goals.

In recent years we, as an association, have not done our fair share in working for better communications. We are trying to remedy this situation in the following ways:

1. Encouraging an increase in contacts between the classroom teachers and parents.
2. Encourage teacher attendance at school board meetings.
3. Contributing newsworthy school items to the local newspaper.
4. Providing this weekly column to present our concerns and opinions on educational issues to you.

We would like you to help us improve communications, and these are some possible suggestions:

1. Increase contacts with your children's teachers when you have questions or information that pertains to your child.
2. Attend school board meetings and let your opinions be known.
3. Let us know of your opinions or questions concerning this column so we may make it more relevant to you. (Write: C.E.A. at the High School.)
4. If you have other suggestions for improving communications, let us know.

The Chelsea Education Association.



The Chelsea Standard

Sen. Bursley Against Park As Planned

State Senator Gilbert Bursley, a recently acquired ally of the opponents of the Mill Creek Park project, has written to A. Gene Gazley, director of DNR, recommending that the present park proposal be tabled.

"I cannot help but be impressed by the almost overwhelming public sentiment against the park as presently proposed," writes Bursley. "It is not only the residents of the area who understandably have a bias on the matter, but also presumably objective groups in the conservation area who voice opposition."

"I strongly recommend that a reappraisal of the type of park proposed in Lima township be made and that the present proposal be tabled." Bursley made this suggestion after mentioning that "a frequently raised suggestion was for a park but without a dam and major water impoundment."

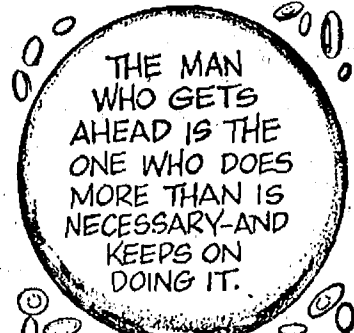
He also wrote, "Another meritorious suggestion would be for inclusion of bicycle paths in future recreational projects (there being great and growing interest in cycling)."

Bursley also mentioned in the letter that interested legislators are reviewing Huron Clinton Metropolitan Authority's present legal is a have an Authority with maximum appreciation of the needs and desires of the people of the area as a whole." Bursley stressed, "Responsiveness to public sentiment and a change for public input are a high priority."

The senator explained that those priorities were in his mind when he called for the public hearing in Lansing on the Mill Creek issue last February.

While making his suggestion, Bursley reiterated his support of the Department of Natural Resources' "concept of land acquisition now against future park development," and expressed his appreciation for the public hearing DNR conducted in Ann Arbor.

BUTTON BARBS



WATERLOO LANDMARK: The first Methodist church in Waterloo still stands, keeping an unkempt vigil across the street from its larger, more modern offspring. Rather than let time take

its toll, Mr. and Mrs. Louis Ramp have donated the landmark to the township which plans to renovate the structure to be used as the township hall.

Gleaner Hall Given for Use As Waterloo Township Hall

Waterloo's Gleaner Hall on Washington St. has been donated to the township by Mr. and Mrs. Louis Ramp, for use as a township hall.

The township board, upon acceptance of the deed to the property, decided to use a portion of its revenue sharing funds to renovate the structure.

The development project will take place over a period of five

years under the supervision of a five-member citizens committee. A member of the board will work with the group. The project could result in the expenditure of as much as \$20,000.

Once ready for use, the town hall shall provide three times the space available in the existing one located three blocks away.

The Gleaner Hall was the first Methodist church in Waterloo,

back in the 1800's. It stands across the street from the United Methodist church.

The internationally known Kelsey Museum of Ancient and Medieval Archaeology at the University of Michigan is visited by some 15,000 people each year.

EXPERT

BUMPING and PAINTING

FREE ESTIMATES - ALL MAKES

LLOYD BRIDGES CHEVROLET
475-1373 CHELSEA, MICH.

REAL ESTATE ADVICE

RESIDENTIAL PROPERTIES
COMMERCIAL - INDUSTRIAL
FARMS
VACANT LANDS

SPEAR & ASSOCIATES,
REALTORS

1935 Pauline Plaza

769-5750



ELLIS PRATT
428-8046

Thomson Brothers Act In 'K' Tennis Team

The Thomson brothers, Tom, Steve, and twins Mike and Mark, who spent much of their childhood in Chelsea, are making history at Kalamazoo College. These sons of Mr. and Mrs. John R. Thomson, now of Grosse Pointe Park, are making a brother act out of the college tennis team.

Never before has the college had four members of the same family in school at the same time, let alone on the same athletic team. The inattentive spectator at a college match might even suppose they are the entire team!

Tom, the senior member of the brothers, is No. 2 singles man on the squad. He and brother Steve are No. 2 in doubles. Steve is No. 6 when alone.

The oldest Thomson was the last Kalamazoo Hornet to be eliminated in the NCAA College Division Tournament last June and was the key to K-College's relatively

high sixth-place finish in the final team standings.

The Thomson twins, freshmen, form the college's No. 3 doubles team.

According to Tom, the boys' father was responsible for training the foursome. He played varsity tennis at Kings Point Merchant Marine Academy and still plays at Grosse Pointe Indoor Tennis Club. John Thomson is an engineer for Chrysler Corp.

While at Chelsea High, Tom played varsity tennis and twice reached the quarter-finals of the state tourney at Stowe Stadium. Steve also was a state quarter-finalist for Chelsea while the twins participated in the tournament last year in doubles for Grosse Pointe South.

The fifth Thomson brother, Dan, is a junior at Grosse Pointe High.

Subscribe today to The Standard!



PROBLEMS??

That's why we're here!

Trust us, We're the guys who know the inside story... and our shop is equipped for any car emergency. Service is our specialty. So bring your problems to us.

TIRES - BATTERIES - ELECTRONIC TUNE-UPS
BRAKE SERVICE - WHEEL ALIGNMENT - WRECKER SERVICE

Fred's Standard Service

889 S. Main, Chelsea

Phone 475-2804

make the greatest cooking discovery since fire!

HAVE MORE TIME FOR FAMILY FUN get a

SAVES UP TO 75% COOKING TIME

ELIMINATES MESSY POTS AND PANS

MAKES MEAL PLANNING A SNAP

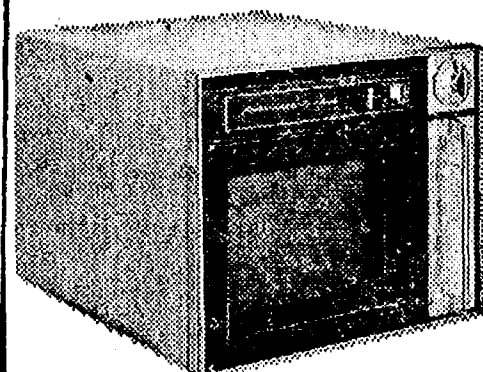
COOKS COOL WITH NO MASSIVE HEAT BUILD-UP

EXCLUSIVE 5 YEAR WARRANTY



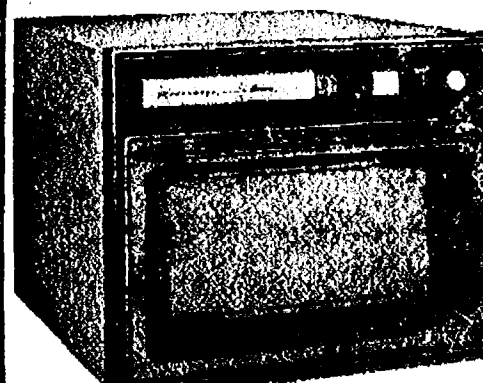
Radarange

MICROWAVE OVEN
made only by Amana.



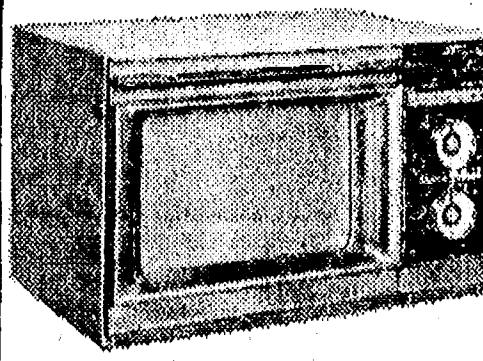
MODEL R-1J

- Side swing, full width See-Thru Door
- Positive Lock prevents operation with door open
- 15 minute Timer Control
- Light switch
- Exclusive Radarange oven broiler tray



MODEL R-2

- Pull down See-Thru Door
- Automatic Electronic Lock locks unit so door can't be opened during operation
- Start switch
- Stop switch
- Light switch
- Exclusive Radarange oven broiler tray



MODEL RR-4

- Pull down See-Thru Door
- Automatic Electronic Lock locks unit so door can't be opened without stopping the operation
- 5-minute Timer Control
- 30-minute Timer Control
- Start switch
- Stop switch
- Light switch
- Off/On buzzer switch
- Exclusive Radarange oven broiler tray

PRICES STARTING AT \$349⁰⁰

VISIT HEYDLAUFF'S
During the Kiwanis Club's
Annual Easter Flower Sale...

SEE the
AMANA COOKING DEMONSTRATION
Friday and Saturday, April 20-21
With Amana's Own
Radarange Home Economist
LYNETTE STASTNY

Friday, 8 a.m. to 9 p.m. Saturday, 8 a.m. to 6 p.m.

FREE Starter Set of Anchor-Hocking Cookware will be given with purchase of any Amana Radarange Friday and Saturday, April 20-21

FREE EASTER LILY WITH PURCHASE OF ANY MAJOR APPLIANCE

HEYDLAUFF'S

113 North Main, Chelsea

Phone 475-1221

The freezer's on the bottom!

Amana Refrigerator-Freezer

Designed for the way you use it!



Refrigerator on top because you use it more.

Model BC-20K
20.1 cu. ft. capacity
13.6 cu. ft. refrigerator
6.5 cu. ft. (228 lb.) freezer

- Freezer has fast freeze shelf and 2 ice trays
- Two Independent Cold Controls, one for refrigerator, one for freezer
- Decorator Trim Kit as extra buy option; match your kitchen decor
- "Refrigerator within a refrigerator" just for fresh meats
- Stor-Mor® Door for most used foods
- Exclusive Amana 5-Year Warranty on parts and related labor

AMANA 5-YEAR WARRANTY

Amana warrants for 5 years from date of original purchase in U.S. replacement or repair of parts found defective as to workmanship or material under normal use. This includes labor required for replacement of defective parts. Defective parts are to be returned through Amana's dealer-distributor organization. Owner is responsible for service man's travel charges, local cartage, replacement of gaskets, rubber or plastic parts and light bulbs. Any product subjected to accident, misuse, negligence, abuse, defacement, or alteration shall void the warranty. In Canada, the warranty applies as above except that it does not cover taxes, duties, assessments levied at time of part export. AMANA REFRIGERATION, INC., AMANA, IOWA